

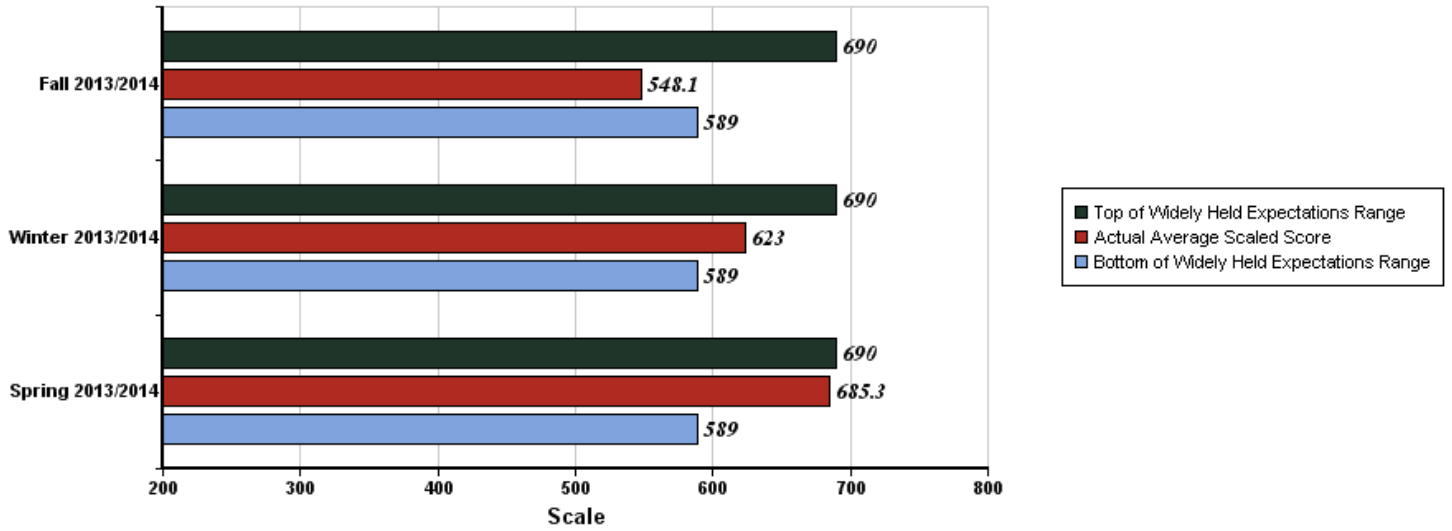


# Pre-K 4 SA Student Assessment Results for 2013-2014

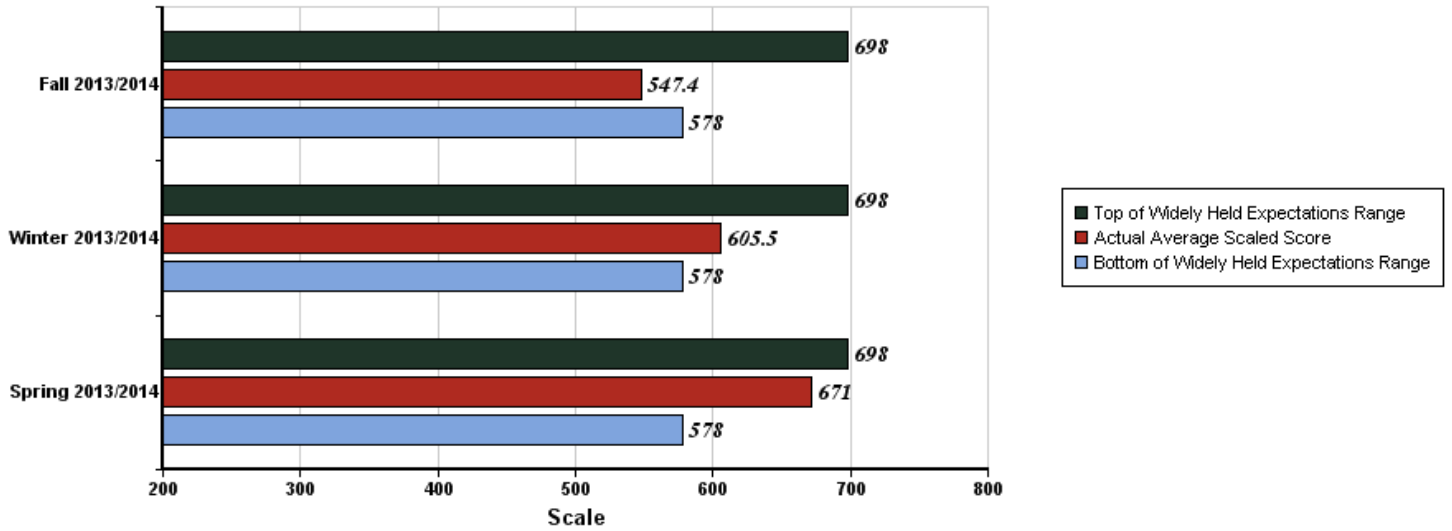
<b>Gold Assessment Results Pre and Post Pre-K 4 SA for 2013-14</b>									
<b>Skill Area</b>	<b>Fall 2013 Student Assessment Results (Upon Entering Pre-K 4 SA)</b>					<b>Spring 2014 Student Assessment Results (Post Pre-K 4 SA)</b>			
	<b>Below Expec.*</b>	<b>Meets Expec.*</b>	<b>Exceeds Expec.*</b>	<b>Meets &amp; Exceeds Expec.</b>		<b>Below Expec.*</b>	<b>Meets Expec.*</b>	<b>Exceeds Expec.*</b>	<b>Meets &amp; Exceeds Expec.</b>
<b>Social-Emotional</b>	40.3%	46.8%	13.0%	<b>59.8%</b>		19.3%	51.6%	29.1%	<b>80.7%</b>
<b>Physical</b>	39.2%	39.1%	21.7%	<b>60.8%</b>		18.4%	56.8%	24.9%	<b>81.7%</b>
<b>Language</b>	28.4%	54.5%	17.1%	<b>71.6%</b>		15.9%	56.7%	27.4%	<b>84.1%</b>
<b>Cognitive</b>	39.5%	46.2%	14.3%	<b>60.5%</b>		14.0%	38.3%	47.7%	<b>86.0%</b>
<b>Literacy</b>	32.4%	49.6%	17.9%	<b>67.5%</b>		12.2%	31.6%	56.2%	<b>87.8%</b>
<b>Math</b>	31.5%	46.7%	21.8%	<b>68.5%</b>		10.0%	31.5%	58.5%	<b>90.0%</b>

\*Note: Below, meet or exceeds comparison is against a national sample of 30,000 Pre-K students.

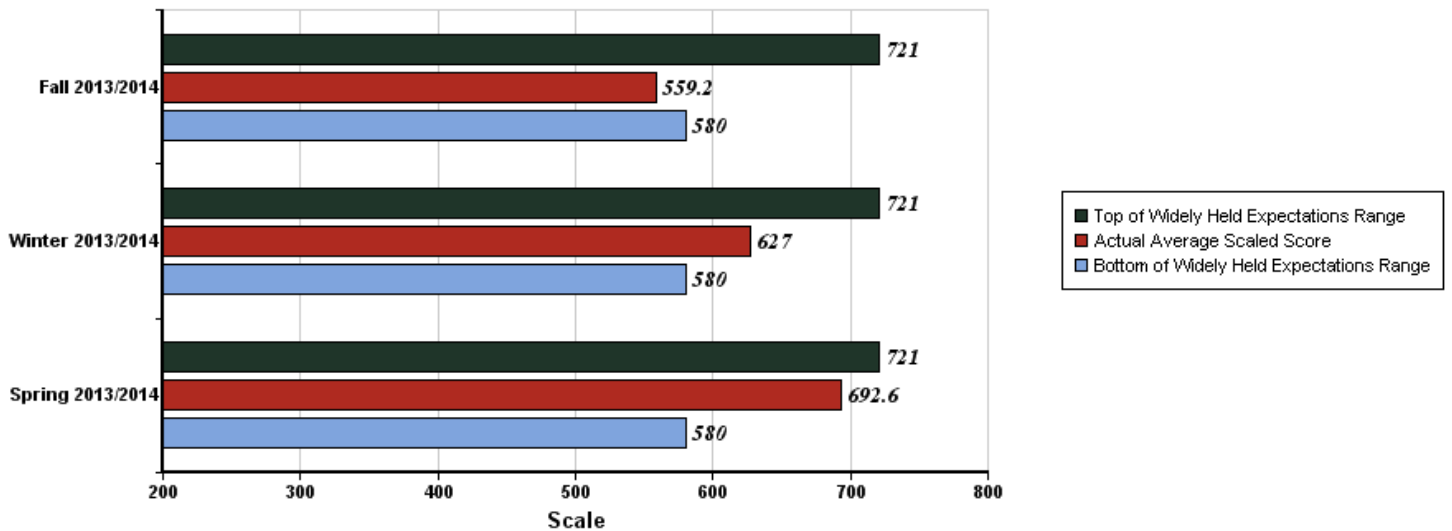
***Social-Emotional***



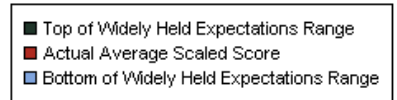
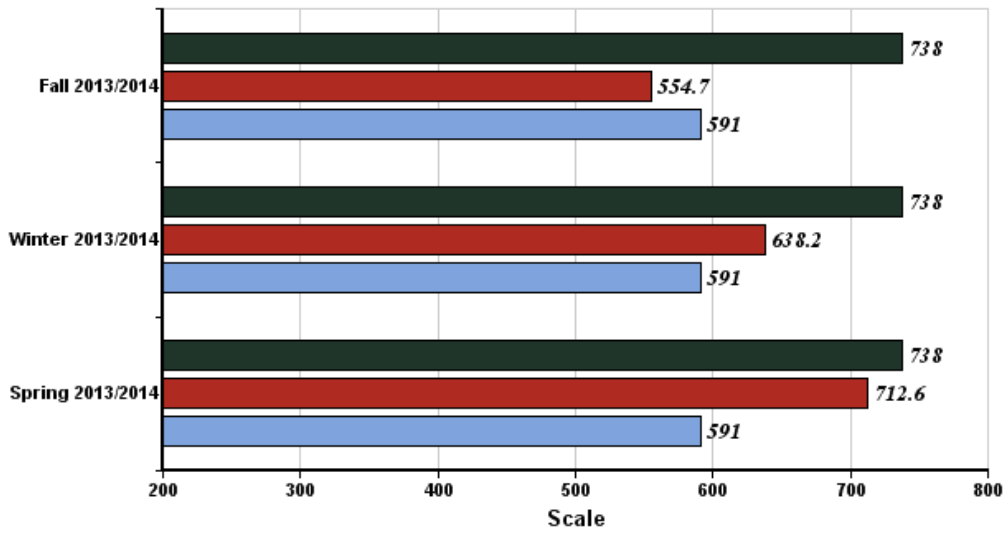
***Physical***



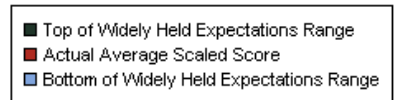
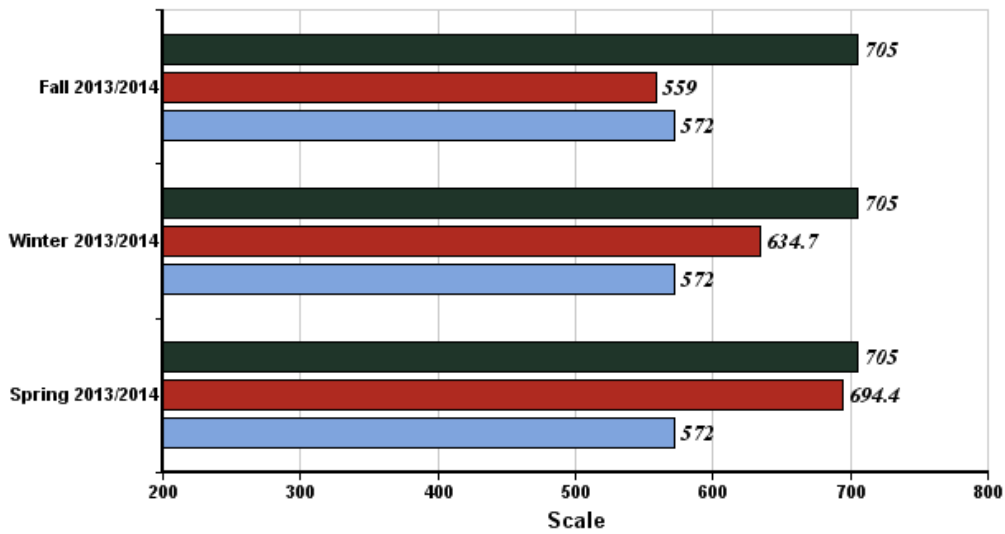
***Language***



### Cognitive



### Literacy



### Mathematics

