

# Digital Off-Premises Signs Community Meetings

## Questionnaire/Comment Form

Thank you for participating in today's community meeting.

Please take a few minutes to respond to the questions below.

Please base your comments on the 13 existing digital signs within the City of San Antonio.



Check only one answer for each question below.

### Message dwell time of ten seconds

- much too long
- too long
- about right
- too short
- much too short
- undecided

### Daytime Intensity levels (nits)

- much too bright
- too bright
- about right
- too dim
- much too dim
- undecided

### Nighttime Intensity levels (nits)

- much too bright
- too bright
- about right
- too dim
- much too dim
- undecided

### Spacing requirements

- much too far
- too far
- about right
- too close
- much too close
- undecided

Check only one answer for the question below.

### Sign Usage for Public Information

appropriate for many different types of public service announcements (FBI warnings, recycling information, and emergency events)

appropriate for emergencies and alerts and time specific public information (such as air quality alert days, hurricane evacuation, Amber Alerts)

not appropriate

undecided

Rank the items in level of importance to you  
(1 = most important, 6 = least important)  
for the question below.

### What issues not addressed in the pilot program should be considered if a revised ordinance is considered?

2 Visual effects between successive displays (i.e. slide transition)

3 Amount and size of information displayed. (i.e. phone numbers, website addresses)

1 Placement near key driver decision points (i.e. major interchanges, complicated merge areas)

4 Incentives to promote take downs in scenic corridors and urban design districts

6 Spacing from Transguide signs

5 Solar capability

Other, please specify:



# Digital Off-Premises Signs Community Meetings

## Questionnaire/Comment Form

Thank you for participating in today's community meeting.

Please take a few minutes to respond to the questions below.

Please base your comments on the 13 existing digital signs within the City of San Antonio.



Check only one answer for each question below.

### Message dwell time of ten seconds

- much too long
- too long
- about right
- too short
- much too short
- undecided

### Daytime Intensity levels (nits)

- much too bright
- too bright
- about right
- too dim
- much too dim
- undecided

### Nighttime Intensity levels (nits)

- much too bright
- too bright
- about right
- too dim
- much too dim
- undecided

### Spacing requirements

- much too far
- too far
- about right
- too close
- much too close
- undecided

Check only one answer for the question below.

### Sign Usage for Public Information

appropriate for many different types of public service announcements (FBI warnings, recycling information, and emergency events)

appropriate for emergencies and alerts and time specific public information (such as air quality alert days, hurricane evacuation, Amber Alerts)

not appropriate

undecided

Rank the items in level of importance to you  
(1 = most important, 6 = least important)  
for the question below.

### What issues not addressed in the pilot program should be considered if a revised ordinance is considered?

Visual effects between successive displays (i.e. slide transition)

Amount and size of information displayed. (i.e. phone numbers, website addresses)

Placement near key driver decision points (i.e. major interchanges, complicated merge areas)

Incentives to promote take downs in scenic corridors and urban design districts

Spacing from Transguide signs

Solar capability

Other, please specify:

---

---

---



# Digital Off-Premises Signs Community Meetings

## Questionnaire/Comment Form

Thank you for participating in today's community meeting.

Please take a few minutes to respond to the questions below.

Please base your comments on the 13 existing digital signs within the City of San Antonio.



Check only one answer for each question below.

### Message dwell time of ten seconds

- much too long
- too long
- about right
- too short
- much too short
- undecided

### Daytime Intensity levels (nits)

- much too bright
- too bright
- about right
- too dim
- much too dim
- undecided

### Nighttime Intensity levels (nits)

- much too bright
- too bright
- about right
- too dim
- much too dim
- undecided

### Spacing requirements

- much too far
- too far
- about right
- too close
- much too close
- undecided

Check only one answer for the question below.

### Sign Usage for Public Information

appropriate for many different types of public service announcements (FBI warnings, recycling information, and emergency events)

appropriate for emergencies and alerts and time specific public information (such as air quality alert days, hurricane evacuation, Amber Alerts)

not appropriate

undecided

Rank the items in level of importance to you  
(1 = most important, 6 = least important)  
for the question below.

### What issues not addressed in the pilot program should be considered if a revised ordinance is considered?

2  Visual effects between successive displays (i.e. slide transition)

Amount and size of information displayed. (i.e. phone numbers, website addresses)

Placement near key driver decision points (i.e. major interchanges, complicated merge areas)

3  Incentives to promote take downs in scenic corridors and urban design districts

Spacing from Transguide signs

1  Solar capability

Other, please specify:

Check all that apply.

**What provision(s) in the sign ordinance would you like to learn more about**

- Off-premises (billboards), general requirements
- Urban design districts (i.e. scenic corridors, neighborhood conservation districts, etc)
- Temporary/weekend signs (i.e. bandit signs)
- Over-the-street banners
- Take down and removal requirements *For political ads / election signs*
- Nonconforming rights for existing signs
- 2007 Digital off-premises pilot program
- Other (please specify: \_\_\_\_\_)

Check only one answer for the question below.

**Overall**

- The City should allow additional off-premises digital signs and with less restrictions
- The City should allow additional off-premises digital signs and using restrictions already in place
- The City should allow additional off-premises digital signs and with greater restrictions (such as longer dwell times, lower intensity levels, etc.)
- The City should not allow additional off-premises digital signs
- Undecided

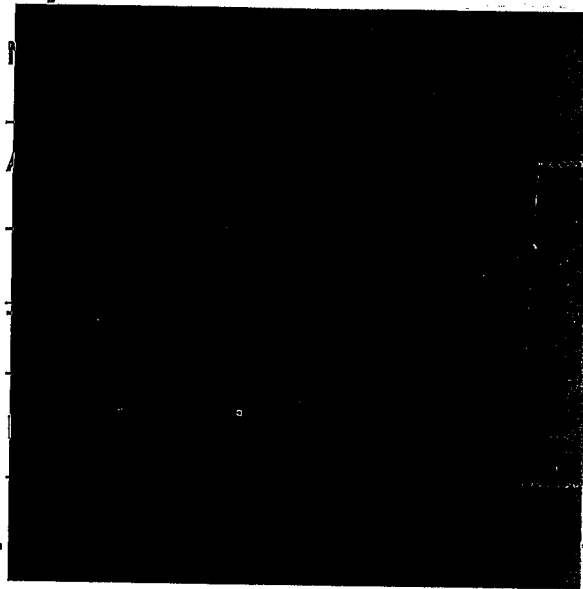
**ADDITIONAL COMMENTS:**

- require solar power to be used for at least 50% of the signs power need

- ban "powerpoint" like transitions / animated transitions

- increase the take down ratio

**Optional:**



*wp/h*

# Digital Off-Premises Signs Community Meetings

## Questionnaire/Comment Form

Thank you for participating in today's community meeting.

Please take a few minutes to respond to the questions below.

Please base your comments on the 13 existing digital signs within the City of San Antonio.



*Check only one answer for each question below.*

### Message dwell time of ten seconds

- much too long
- too long
- about right
- too short
- much too short
- undecided

### Daytime Intensity levels (nits)

- much too bright
- too bright
- about right
- too dim
- much too dim
- undecided

### Nighttime Intensity levels (nits)

- much too bright
- too bright
- about right
- too dim
- much too dim
- undecided

### Spacing requirements

- much too far
- too far
- about right
- too close
- much too close
- undecided

*Check only one answer for the question below.*

### Sign Usage for Public Information

- appropriate for many different types of public service announcements (FBI warnings, recycling information, and emergency events)

- appropriate for emergencies and alerts and time specific public information (such as air quality alert days, hurricane evacuation, Amber Alerts)

- not appropriate

- undecided

*Rank the items in level of importance to you  
(1 = most important, 6 = least important)  
for the question below.*

### What issues not addressed in the pilot program should be considered if a revised ordinance is considered?

- Visual effects between successive displays (i.e. slide transition)

- Amount and size of information displayed. (i.e. phone numbers, website addresses)

- Placement near key driver decision points (i.e. major interchanges, complicated merge areas)

- Incentives to promote take downs in scenic corridors and urban design districts

- Spacing from Transguide signs

- Solar capability

- Other, please specify:

---

---

---



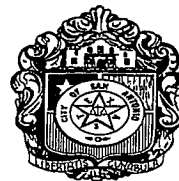
# Digital Off-Premises Signs Community Meetings

## Questionnaire/Comment Form

Thank you for participating in today's community meeting.

Please take a few minutes to respond to the questions below.

Please base your comments on the 13 existing digital signs within the City of San Antonio.



*Check only one answer for each question below.*

### Message dwell time of ten seconds

- much too long
- too long
- about right
- too short
- much too short
- undecided

### Daytime Intensity levels (nits)

- much too bright
- too bright
- about right
- too dim
- much too dim
- undecided

### Nighttime Intensity levels (nits)

- much too bright
- too bright
- about right
- too dim
- much too dim
- undecided

### Spacing requirements

- much too far
- too far
- about right
- too close
- much too close
- undecided

*Check only one answer for the question below.*

### Sign Usage for Public Information

- appropriate for many different types of public service announcements (FBI warnings, recycling information, and emergency events)
- appropriate for emergencies and alerts and time specific public information (such as air quality alert days, hurricane evacuation, Amber Alerts)

not appropriate

undecided

*Rank the items in level of importance to you  
(1 = most important, 6 = least important)  
for the question below.*

### What issues not addressed in the pilot program should be considered if a revised ordinance is considered?

- Visual effects between successive displays (i.e. slide transition)
- Amount and size of information displayed. (i.e. phone numbers, website addresses)
- Placement near key driver decision points (i.e. major interchanges, complicated merge areas)
- Incentives to promote take downs in scenic corridors and urban design districts
- Spacing from Transguide signs
- Solar capability
- Other, please specify:



# Digital Off-Premises Signs Community Meetings

## Questionnaire/Comment Form

Thank you for participating in today's community meeting.

Please take a few minutes to respond to the questions below.

Please base your comments on the 13 existing digital signs within the City of San Antonio.



Check only one answer for each question below.

### Message dwell time of ten seconds

- much too long
- too long
- about right
- too short
- much too short
- undecided

### Daytime Intensity levels (nits)

- much too bright
- too bright
- about right
- too dim
- much too dim
- undecided

### Nighttime Intensity levels (nits)

- much too bright
- too bright
- about right
- too dim
- much too dim
- undecided

### Spacing requirements

- much too far
- too far
- about right
- too close
- much too close
- undecided

Check only one answer for the question below.

### Sign Usage for Public Information

appropriate for many different types of public service announcements (FBI warnings, recycling information, and emergency events).

appropriate for emergencies and alerts and time specific public information (such as air quality alert days, hurricane evacuation, Amber Alerts)

not appropriate

undecided

Rank the items in level of importance to you  
(1 = most important, 6 = least important)  
for the question below.

### What issues not addressed in the pilot program should be considered if a revised ordinance is considered?

6 Visual effects between successive displays (i.e. slide transition)

2 Amount and size of information displayed. (i.e. phone numbers, website addresses)

6 Placement near key driver decision points (i.e. major interchanges, complicated merge areas)

6 Incentives to promote take downs in scenic corridors and urban design districts

6 Spacing from Transguide signs

6 Solar capability

Other, please specify:

Check all that apply.

**What provision(s) in the sign ordinance would you like to learn more about**

- Off-premises (billboards), general requirements
- Urban design districts (i.e. scenic corridors, neighborhood conservation districts, etc)
- Temporary/weekend signs (i.e. bandit signs)
- Over-the-street banners -
- Take down and removal requirements
- Nonconforming rights for existing signs
- 2007 Digital off-premises pilot program
- Other (please specify: \_\_\_\_\_)

Check only one answer for the question below.

**Overall**

- The City should allow additional off-premises digital signs and with less restrictions
- The City should allow additional off-premises digital signs and using restrictions already in place
- The City should allow additional off-premises digital signs and with greater restrictions (such as longer dwell times, lower intensity levels, etc.)
- The City should not allow additional off-premises digital signs
- Undecided

**ADDITIONAL COMMENTS:**

The digital billboard ~~is~~ is the mechanism that will reduce the number of traditional billboards in the city. ~~It is the only~~ It will benefit the industry and those that oppose billboards in general while providing new technology that will benefit public messaging.

**Optional:**

Name

Address:

Telephone:

Email:

# Digital Off-Premises Signs Community Meetings

## Questionnaire/Comment Form

Thank you for participating in today's community meeting.

Please take a few minutes to respond to the questions below.

Please base your comments on the 13 existing digital signs within the City of San Antonio.



Check only one answer for each question below.

### Message dwell time of ten seconds

- much too long
- too long
- about right
- too short
- much too short
- undecided

### Daytime Intensity levels (nits)

- much too bright
- too bright
- about right
- too dim
- much too dim
- undecided

### Nighttime Intensity levels (nits)

- much too bright
- too bright
- about right
- too dim
- much too dim
- undecided

### Spacing requirements

- much too far
- too far
- about right
- too close
- much too close
- undecided

Check only one answer for the question below.

### Sign Usage for Public Information

appropriate for many different types of public service announcements (FBI warnings, recycling information, and emergency events)

appropriate for emergencies and alerts and time specific public information (such as air quality alert days, hurricane evacuation, Amber Alerts)

not appropriate

undecided

Rank the items in level of importance to you  
(1 = most important, 6 = least important)  
for the question below.

### What issues not addressed in the pilot program should be considered if a revised ordinance is considered?

(4) Visual effects between successive displays (i.e. slide transition)

(1) Amount and size of information displayed. (i.e. phone numbers, website addresses)

(3) Placement near key driver decision points (i.e. major interchanges, complicated merge areas)

(5) Incentives to promote take downs in scenic corridors and urban design districts

Spacing from Transguide signs

(2) Solar capability

Other, please specify:

Check all that apply.

**What provision(s) in the sign ordinance would you like to learn more about**

- Off-premises (billboards), general requirements
- Urban design districts (i.e. scenic corridors, neighborhood conservation districts, etc)
- Temporary/weekend signs (i.e. bandit signs)
- Over-the-street banners
- Take down and removal requirements
- Nonconforming rights for existing signs
- 2007 Digital off-premises pilot program
- Other (please specify: \_\_\_\_\_)

Check only one answer for the question below.

**Overall**

- The City should allow additional off-premises digital signs and with less restrictions
- The City should allow additional off-premises digital signs and using restrictions already in place
- The City should allow additional off-premises digital signs and with greater restrictions (such as longer dwell times, lower intensity levels, etc.)
- The City should not allow additional off-premises digital signs
- Undecided

**ADDITIONAL COMMENTS:**

*We need some in the west and southwest sides of town.*

*Take Down Ratios should have fewer removed for one put up.*

*Public info should be for all possibilities not having to decide between 2 groups.*

*Do not eliminate billboards & especially digital ones.*

*Getting national ad dollars as if for money here.*

*Younger people used to videos & digital.*

*Not want S.A. get left behind, City could get*

**Optional:**

Name

Address

Telephone

Employer

*D. Com*

# Digital Off-Premises Signs Community Meetings

## Questionnaire/Comment Form

Thank you for participating in today's community meeting.

Please take a few minutes to respond to the questions below.

Please base your comments on the 13 existing digital signs within the City of San Antonio.



*Check only one answer for each question below.*

### Message dwell time of ten seconds

- much too long
- too long
- about right
- too short
- much too short
- undecided

### Daytime Intensity levels (nits)

- much too bright
- too bright
- about right
- too dim
- much too dim
- undecided

### Nighttime Intensity levels (nits)

- much too bright
- too bright
- about right
- too dim
- much too dim
- undecided

### Spacing requirements

- much too far
- too far
- about right
- too close
- much too close
- undecided

*Check only one answer for the question below.*

### Sign Usage for Public Information

appropriate for many different types of public service announcements (FBI warnings, recycling information, and emergency events)

appropriate for emergencies and alerts and time specific public information (such as air quality alert days, hurricane evacuation, Amber Alerts)

not appropriate

undecided

*Rank the items in level of importance to you  
(1 = most important, 6 = least important)  
for the question below.*

### What issues not addressed in the pilot program should be considered if a revised ordinance is considered?

Visual effects between successive displays (i.e. slide transition)

Amount and size of information displayed. (i.e. phone numbers, website addresses)

Placement near key driver decision points (i.e. major interchanges, complicated merge areas)

Incentives to promote take downs in scenic corridors and urban design districts

Spacing from Transguide signs

Solar capability

Other, please specify:

---

---

---

Check all that apply.

**What provision(s) in the sign ordinance would you like to learn more about**

- Off-premises (billboards), general requirements
- Urban design districts (i.e. scenic corridors, neighborhood conservation districts, etc)
- Temporary/weekend signs (i.e. bandit signs)
- Over-the-street banners
- Take down and removal requirements
- Nonconforming rights for existing signs
- 2007 Digital off-premises pilot program
- Other (please specify: \_\_\_\_\_)

Check only one answer for the question below.

**Overall**

- The City should allow additional off-premises digital signs and with less restrictions
- The City should allow additional off-premises digital signs and using restrictions already in place
- The City should allow additional off-premises digital signs and with greater restrictions (such as longer dwell times, lower intensity levels, etc.)
- The City should not allow additional off-premises digital signs *or any other*
- Undecided

**ADDITIONAL COMMENTS:**

- *Is there a public inspection record of billboards?*
- *Source of dwell times - why?*
- *Any technical guidance on driver confusion?*
- *Amber alert - public information allow compensation to sign owner*
- *visual effects between display is animation*
- *Analysis by staff - is there a Human Factors Engineer on staff?*
- *Are new companies prohibited from putting up billboards?*
- *The signs are an attraction which is absolutely contrary to safety on the highway.*
- *State law should prohibit such signs as distractions to drivers*
- *San Antonio should wait for safety studies to be complete before deciding for these.*

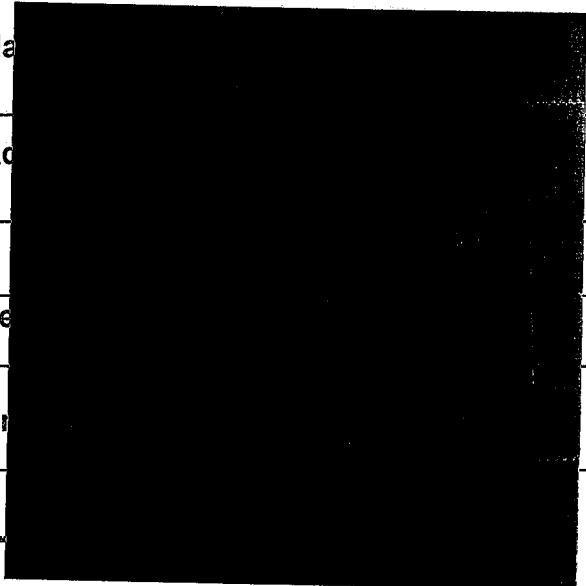
**Optional:**

Na \_\_\_\_\_

Ac \_\_\_\_\_

Te \_\_\_\_\_

Er \_\_\_\_\_



# Digital Off-Premises Signs Community Meetings

## Questionnaire/Comment Form

Thank you for participating in today's community meeting.  
Please take a few minutes to respond to the questions below.

Please base your comments on the 13 existing digital signs within the City of San Antonio.



Check only one answer for each question below.

### Message dwell time of ten seconds

- much too long
- too long
- about right
- too short
- much too short
- undecided

### Daytime Intensity levels (nits)

- much too bright
- too bright
- about right
- too dim
- much too dim
- undecided

### Nighttime Intensity levels (nits)

- much too bright
- too bright
- about right
- too dim
- much too dim
- undecided

### Spacing requirements

- much too far
- too far
- about right
- too close
- much too close
- undecided

Check only one answer for the question below.

### Sign Usage for Public Information

appropriate for many different types of public service announcements (FBI warnings, recycling information, and emergency events)

appropriate for emergencies and alerts and time specific public information (such as air quality alert days, hurricane evacuation, Amber Alerts) *But Not Needed*

not appropriate

undecided

Rank the items in level of importance to you  
(1 = most important, 6 = least important)  
for the question below.

### What issues not addressed in the pilot program should be considered if a revised ordinance is considered?

Visual effects between successive displays (i.e. slide transition)

Amount and size of information displayed. (i.e. phone numbers, website addresses)

Placement near key driver decision points (i.e. major interchanges, complicated merge areas)

Incentives to promote take downs in scenic corridors and urban design districts

Spacing from Transguide signs

Solar capability

Other, please specify:

Check all that apply.

**What provision(s) in the sign ordinance would you like to learn more about**

- Off-premises (billboards), general requirements
- Urban design districts (i.e. scenic corridors, neighborhood conservation districts, etc)
- Temporary/weekend signs (i.e. bandit signs)
- Over-the-street banners
- Take down and removal requirements
- Nonconforming rights for existing signs
- 2007 Digital off-premises pilot program
- Other (please specify):

Check only one answer for the question below.

**Overall**

- The City should allow additional off-premises digital signs and with less restrictions
- The City should allow additional off-premises digital signs and using restrictions already in place
- The City should allow additional off-premises digital signs and with greater restrictions (such as longer dwell times, lower intensity levels, etc.)
- The City should not allow additional off-premises digital signs
- Undecided

**ADDITIONAL COMMENTS:**

- ① Off-Premise Digital Signs are inherently detracting from the beauty of San Antonio and numbers should be reduced.
- ② Digital Billboards are beneficial to the industry and not to the general public.
- ③ On Premise Signs should be re-regulated.
- ④ Any Studies presented need to be complete and address all aspects of issues.

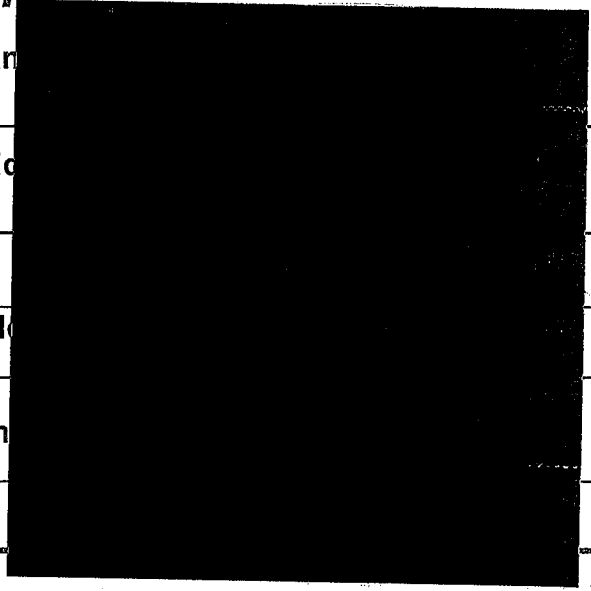
**Optional:**

Name

Address

Telephone

Email



# Digital Off-Premises Signs Community Meetings

## Questionnaire/Comment Form

Thank you for participating in today's community meeting.

Please take a few minutes to respond to the questions below.

Please base your comments on the 13 existing digital signs within the City of San Antonio.



Check only one answer for each question below.

### Message dwell time of ten seconds

- much too long
- too long
- about right
- too short
- much too short
- undecided

### Daytime Intensity levels (nits)

- much too bright
- too bright
- about right
- too dim
- much too dim
- undecided

### Nighttime Intensity levels (nits)

- much too bright
- too bright
- about right
- too dim
- much too dim
- undecided

### Spacing requirements

- much too far
- too far
- about right
- too close
- much too close
- undecided

Check only one answer for the question below.

### Sign Usage for Public Information

appropriate for many different types of public service announcements (FBI warnings, recycling information, and emergency events)

appropriate for emergencies and alerts and time specific public information (such as air quality alert days, hurricane evacuation, Amber Alerts)

not appropriate

undecided

Rank the items in level of importance to you  
(1 = most important, 6 = least important)  
for the question below.

### What issues not addressed in the pilot program should be considered if a revised ordinance is considered?

6 Visual effects between successive displays (i.e. slide transition)

5 Amount and size of information displayed. (i.e. phone numbers, website addresses)

5 Placement near key driver decision points (i.e. major interchanges, complicated merge areas)

1 Incentives to promote take downs in scenic corridors and urban design districts

4 Spacing from Transguide signs

0 Solar capability

Other, please specify:



# Digital Off-Premises Signs Community Meetings

## Questionnaire/Comment Form

Thank you for participating in today's community meeting.

Please take a few minutes to respond to the questions below.

Please base your comments on the 13 existing digital signs within the City of San Antonio.



*Check only one answer for each question below.*

### Message dwell time of ten seconds

- much too long
- too long
- about right
- too short
- much too short
- undecided

### Daytime Intensity levels (nits)

- much too bright
- too bright
- about right
- too dim
- much too dim
- undecided

### Nighttime Intensity levels (nits)

- much too bright
- too bright
- about right
- too dim
- much too dim
- undecided

### Spacing requirements

- much too far
- too far
- about right
- too close
- much too close
- undecided

*Check only one answer for the question below.*

### Sign Usage for Public Information

appropriate for many different types of public service announcements (FBI warnings, recycling information, and emergency events)

appropriate for emergencies and alerts and time specific public information (such as air quality alert days, hurricane evacuation, Amber Alerts)

not appropriate

undecided

*Rank the items in level of importance to you  
(1 = most important, 6 = least important)  
for the question below.*

### What issues not addressed in the pilot program should be considered if a revised ordinance is considered?

Visual effects between successive displays (i.e. slide transition)

Amount and size of information displayed. (i.e. phone numbers, website addresses)

Placement near key driver decision points (i.e. major interchanges, complicated merge areas)

Incentives to promote take downs in scenic corridors and urban design districts

Spacing from Transguide signs

Solar capability

Other, please specify:

Check all that apply.

**What provision(s) in the sign ordinance would you like to learn more about**

- Off-premises (billboards), general requirements
- Urban design districts (i.e. scenic corridors, neighborhood conservation districts, etc)
- Temporary/weekend signs (i.e. bandit signs)
- Over-the-street banners
- Take down and removal requirements
- Nonconforming rights for existing signs
- 2007 Digital off-premises pilot program
- Other (please specify: \_\_\_\_\_)

Check only one answer for the question below.

**Overall**

- The City should allow additional off-premises digital signs and with less restrictions
- The City should allow additional off-premises digital signs and using restrictions already in place
- The City should allow additional off-premises digital signs and with greater restrictions (such as longer dwell times, lower intensity levels, etc.)
- The City should not allow additional off-premises digital signs
- Undecided

**ADDITIONAL COMMENTS:**

I am in favor of a complete moratorium on off-premise billboards. I am also in favor of revising the on-premise signage ordinance. On premise signage, especially digital signage, is completely out of control and undermines efforts to control off-premise billboards.

**Optional:**

N  
A  
T  
E  
ret

# Digital Off-Premises Signs Community Meetings

## Questionnaire/Comment Form

Thank you for participating in today's community meeting.

Please take a few minutes to respond to the questions below.

Please base your comments on the 13 existing digital signs within the City of San Antonio.



Check only one answer for each question below.

### Message dwell time of ten seconds

- much too long
- too long
- about right
- too short
- much too short
- undecided

### Daytime Intensity levels (nits)

- much too bright
- too bright
- about right
- too dim
- much too dim
- undecided

### Nighttime Intensity levels (nits)

- much too bright
- too bright
- about right
- too dim
- much too dim
- undecided

### Spacing requirements

- much too far
- too far
- about right
- too close
- much too close
- undecided

Check only one answer for the question below.

### Sign Usage for Public Information

appropriate for many different types of public service announcements (FBI warnings, recycling information, and emergency events)

appropriate for emergencies and alerts and time specific public information (such as air quality alert days, hurricane evacuation, Amber Alerts)

not appropriate

undecided

Rank the items in level of importance to you  
(1 = most important, 6 = least important)  
for the question below.

### What issues not addressed in the pilot program should be considered if a revised ordinance is considered?

Visual effects between successive displays (i.e. slide transition)

Amount and size of information displayed. (i.e. phone numbers, website addresses)

Placement near key driver decision points (i.e. major interchanges, complicated merge areas)

Incentives to promote take downs in scenic corridors and urban design districts

Spacing from Transguide signs

Solar capability

Other, please specify:

---

---

---

Check all that apply.

**What provision(s) in the sign ordinance would you like to learn more about**

- Off-premises (billboards), general requirements
- Urban design districts (i.e. scenic corridors, neighborhood conservation districts, etc)
- Temporary/weekend signs (i.e. bandit signs)
- Over-the-street banners
- Take down and removal requirements
- Nonconforming rights for existing signs
- 2007 Digital off-premises pilot program
- Other (please specify: \_\_\_\_\_)

Check only one answer for the question below.

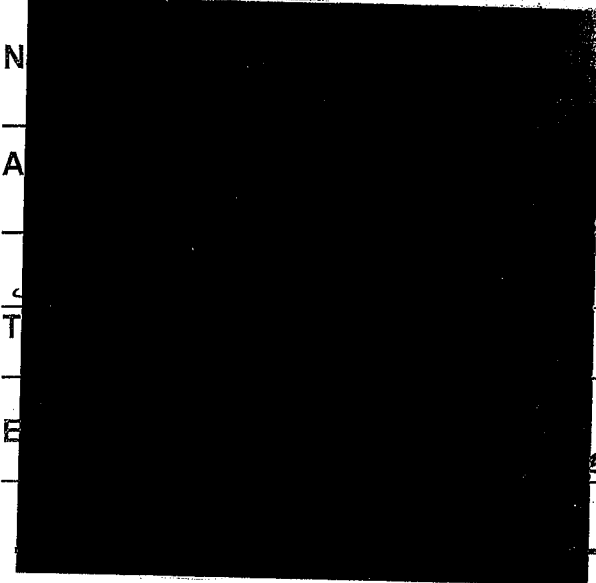
**Overall**

- The City should allow additional off-premises digital signs and with less restrictions
- The City should allow additional off-premises digital signs and using restrictions already in place
- The City should allow additional off-premises digital signs and with greater restrictions (such as longer dwell times, lower intensity levels, etc.)
- The City should not allow additional off-premises digital signs.
- Undecided

**ADDITIONAL COMMENTS:**

NO NEW BILLBOARDS  
ESPECIALLY DIGITALS!!

**Optional:**



# Digital Off-Premises Signs Community Meetings

## Questionnaire/Comment Form

Thank you for participating in today's community meeting.

Please take a few minutes to respond to the questions below.

Please base your comments on the 13 existing digital signs within the City of San Antonio.



Check only one answer for each question below.

### Message dwell time of ten seconds

- much too long
- too long
- about right
- too short
- much too short
- undecided

### Daytime Intensity levels (nits)

- much too bright
- too bright
- about right
- too dim
- much too dim
- undecided

### Nighttime Intensity levels (nits)

- much too bright
- too bright
- about right
- too dim
- much too dim
- undecided

### Spacing requirements

- much too far
- too far
- about right
- too close
- much too close
- undecided

Check only one answer for the question below.

### Sign Usage for Public Information

appropriate for many different types of public service announcements (FBI warnings, recycling information, and emergency events)

*Both Apply + Appropriate* appropriate for emergencies and alerts and time specific public information (such as air quality alert days, hurricane evacuation, Amber Alerts)

not appropriate

undecided

Rank the items in level of importance to you  
(1 = most important, 6 = least important)  
for the question below.

### What issues not addressed in the pilot program should be considered if a revised ordinance is considered?

6 Visual effects between successive displays (i.e. slide transition)

6 Amount and size of information displayed. (i.e. phone numbers, website addresses)

6 Placement near key driver decision points (i.e. major interchanges, complicated merge areas)

6 Incentives to promote take downs in scenic corridors and urban design districts

6 Spacing from Transguide signs

1 Solar capability

Other, please specify:

Check all that apply.

**What provision(s) in the sign ordinance would you like to learn more about**

- Off-premises (billboards), general requirements
- Urban design districts (i.e. scenic corridors, neighborhood conservation districts, etc)
- Temporary/weekend signs (i.e. bandit signs)
- Over-the-street banners
- Take down and removal requirements
- Nonconforming rights for existing signs
- 2007 Digital off-premises pilot program
- Other (please specify: \_\_\_\_\_)

Check only one answer for the question below.

**Overall**

- The City should allow additional off-premises digital signs and with less restrictions
- The City should allow additional off-premises digital signs and using restrictions already in place
- The City should allow additional off-premises digital signs and with greater restrictions (such as longer dwell times, lower intensity levels, etc.)
- The City should not allow additional off-premises digital signs
- Undecided

**ADDITIONAL COMMENTS:**

GA LAW for Dwell time is 10 sec.

FLORIDA LAW IS 8 sec Dwell

**Optional:**

Name

Address:

Telephone:

Email:

# Digital Off-Premises Signs Community Meetings

## Questionnaire/Comment Form

Thank you for participating in today's community meeting.  
Please take a few minutes to respond to the questions below.

Please base your comments on the 13 existing digital signs within the City of San Antonio.



Check only one answer for each question below.

### Message dwell time of ten seconds

- much too long
- too long
- about right
- too short
- much too short
- undecided

### Daytime Intensity levels (nits)

- much too bright
- too bright
- about right
- too dim
- much too dim
- undecided

### Nighttime Intensity levels (nits)

- much too bright
- too bright
- about right
- too dim
- much too dim
- undecided

### Spacing requirements

- much too far
- too far
- about right
- too close
- much too close
- undecided

Check only one answer for the question below.

### Sign Usage for Public Information

- appropriate for many different types of public service announcements (FBI warnings, recycling information, and emergency events)
- appropriate for emergencies and alerts and time specific public information (such as air quality alert days, hurricane evacuation, Amber Alerts)

not appropriate

undecided

Rank the items in level of importance to you  
(1 = most important, 6 = least important)  
for the question below.

### What issues not addressed in the pilot program should be considered if a revised ordinance is considered?

- Visual effects between successive displays (i.e. slide transition)
- Amount and size of information displayed. (i.e. phone numbers, website addresses)
- Placement near key driver decision points (i.e. major interchanges, complicated merge areas)
- Incentives to promote take downs in scenic corridors and urban design districts
- Spacing from Transguide signs
- Solar capability
- Other, please specify:

*Take down all billboards except for emergencies. Billboards make the city look*

*junky many cities are doing this*



# Digital Off-Premises Signs Community Meetings

## Questionnaire/Comment Form

Thank you for participating in today's community meeting.

Please take a few minutes to respond to the questions below.

Please base your comments on the 13 existing digital signs within the City of San Antonio.



Check only one answer for each question below.

### Message dwell time of ten seconds

- much too long
- too long
- about right
- too short
- much too short
- undecided

### Daytime Intensity levels (nits)

- much too bright
- too bright
- about right
- too dim
- much too dim
- undecided

### Nighttime Intensity levels (nits)

- much too bright
- too bright
- about right
- too dim
- much too dim
- undecided

### Spacing requirements

- much too far
- too far
- about right
- too close
- much too close
- undecided

Check only one answer for the question below.

### Sign Usage for Public Information

appropriate for many different types of public service announcements (FBI warnings, recycling information, and emergency events)

appropriate for emergencies and alerts and time specific public information (such as air quality alert days, hurricane evacuation, Amber Alerts)

not appropriate

undecided

Rank the items in level of importance to you  
(1 = most important, 6 = least important)  
for the question below.

### What issues not addressed in the pilot program should be considered if a revised ordinance is considered?

5 Visual effects between successive displays (i.e. slide transition)

3 Amount and size of information displayed. (i.e. phone numbers, website addresses)

1 Placement near key driver decision points (i.e. major interchanges, complicated merge areas)

6 Incentives to promote take downs in scenic corridors and urban design districts

4 Spacing from Transguide signs

2 Solar capability

Other, please specify:

Check all that apply.

**What provision(s) in the sign ordinance would you like to learn more about**

- Off-premises (billboards), general requirements
- Urban design districts (i.e. scenic corridors, neighborhood conservation districts, etc)
- Temporary/weekend signs (i.e. bandit signs)
- Over-the-street banners
- Take down and removal requirements
- Nonconforming rights for existing signs
- 2007 Digital off-premises pilot program
- Other (please specify: \_\_\_\_\_)

Check only one answer for the question below.

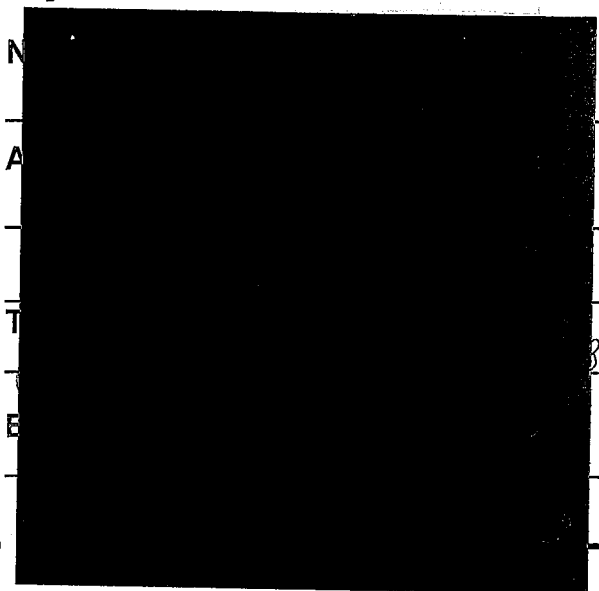
**Overall**

- The City should allow additional off-premises digital signs and with less restrictions
- The City should allow additional off-premises digital signs and using restrictions already in place
- The City should allow additional off-premises digital signs and with greater restrictions (such as longer dwell times, lower intensity levels, etc.)
- The City should not allow additional off-premises digital signs
- Undecided

**ADDITIONAL COMMENTS:**

*The solar signs should be looked into.*

**Optional:**



# Digital Off-Premises Signs Community Meetings

## Questionnaire/Comment Form

Thank you for participating in today's community meeting.

Please take a few minutes to respond to the questions below.

Please base your comments on the 13 existing digital signs within the City of San Antonio.



Check only one answer for each question below.

### Message dwell time of ten seconds

- much too long
- too long
- about right
- too short
- much too short
- undecided

### Daytime Intensity levels (nits)

- much too bright
- too bright
- about right
- too dim
- much too dim
- undecided

### Nighttime Intensity levels (nits)

- much too bright
- too bright
- about right
- too dim
- much too dim
- undecided

### Spacing requirements

- much too far
- too far
- about right
- too close
- much too close
- undecided

Check only one answer for the question below.

### Sign Usage for Public Information

appropriate for many different types of public service announcements (FBI warnings, recycling information, and emergency events)

appropriate for emergencies and alerts and time specific public information (such as air quality alert days, hurricane evacuation, Amber Alerts)

not appropriate

undecided

Rank the items in level of importance to you  
(1 = most important, 6 = least important)  
for the question below.

### What issues not addressed in the pilot program should be considered if a revised ordinance is considered?

3 Visual effects between successive displays (i.e. slide transition)

6 Amount and size of information displayed. (i.e. phone numbers, website addresses)

2 Placement near key driver decision points (i.e. major interchanges, complicated merge areas)

1 Incentives to promote take downs in scenic corridors and urban design districts

5 Spacing from Transguide signs

4 Solar capability

Other, please specify:

Check all that apply.

**What provision(s) in the sign ordinance would you like to learn more about**

- Off-premises (billboards), general requirements
- Urban design districts (i.e. scenic corridors, neighborhood conservation districts, etc)
- Temporary/weekend signs (i.e. bandit signs)
- Over-the-street banners
- Take down and removal requirements
- Nonconforming rights for existing signs
- 2007 Digital off-premises pilot program
- Other (please specify: \_\_\_\_\_)

Check only one answer for the question below.

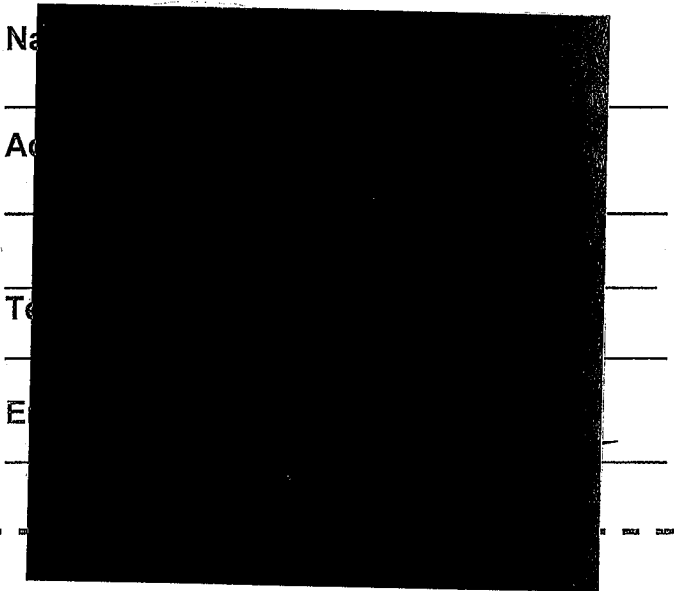
**Overall**

- The City should allow additional off-premises digital signs and with less restrictions
- The City should allow additional off-premises digital signs and using restrictions already in place
- The City should allow additional off-premises digital signs and with greater restrictions (such as longer dwell times, lower intensity levels, etc.)
- The City should not allow additional off-premises digital signs
- Undecided

**ADDITIONAL COMMENTS:**

I SUGGEST ADDITIONAL RESTRICTIONS ON THE TAKEDOWN/REPLACEMENT PROVISIONS THAT SHOULD LINK THE APPROVAL PROCESS FOR NEW SIGNS TO BE GEOGRAPHICALLY CONNECTED TO TAKEDOWNS IN THE SAME AREA - BY ZIP CODE, COUNCIL DISTRICT OR SOME OTHER DEFINITION. WITH SUCH A PROVISION, WE WOULD POTENTIALLY AVOID CLUSTERING SIGNS IN CERTAIN AREAS OF THE CITY WHILE SIMULTANEOUSLY REMOVING SIGNS IN OTHER PARTS OF THE CITY THAT HAVE BECOME LESS ECONOMICALLY VIABLE.

**Optional:**



# Digital Off-Premises Signs Community Meetings

## Questionnaire/Comment Form

Thank you for participating in today's community meeting.

Please take a few minutes to respond to the questions below.

Please base your comments on the 13 existing digital signs within the City of San Antonio.



Check only one answer for each question below.

### Message dwell time of ten seconds

- much too long
- too long
- about right
- too short
- much too short
- undecided

(over)

### Daytime Intensity levels (nits)

- much too bright
- too bright
- about right
- too dim
- much too dim
- undecided

(over)

### Nighttime Intensity levels (nits)

- much too bright
- too bright
- about right
- too dim
- much too dim
- undecided

(over)

### Spacing requirements

- much too far
- too far
- about right
- too close
- much too close
- undecided

(over)

Check only one answer for the question below.

### Sign Usage for Public Information

appropriate for many different types of public service announcements (FBI warnings, recycling information, and emergency events)

appropriate for emergencies and alerts and time specific public information (such as air quality alert days, hurricane evacuation, Amber Alerts)

not appropriate

undecided

(over)

Rank the items in level of importance to you  
(1 = most important, 6 = least important)  
for the question below.

### What issues not addressed in the pilot program should be considered if a revised ordinance is considered?

Visual effects between successive displays (i.e. slide transition)

Amount and size of information displayed. (i.e. phone numbers, website addresses)

Placement near key driver decision points (i.e. major interchanges, complicated merge areas)

Incentives to promote take downs in scenic corridors and urban design districts

Spacing from Transguide signs

Solar capability

Other, please specify:

(over)

Check all that apply.

**What provision(s) in the sign ordinance would you like to learn more about**

- Off-premises (billboards), general requirements
- Urban design districts (i.e. scenic corridors, neighborhood conservation districts, etc)
- Temporary/weekend signs (i.e. bandit signs)
- Over-the-street banners
- Take down and removal requirements
- Nonconforming rights for existing signs
- 2007 Digital off-premises pilot program
- Other (please specify:

(Other)

Check only one answer for the question below.

**Overall**

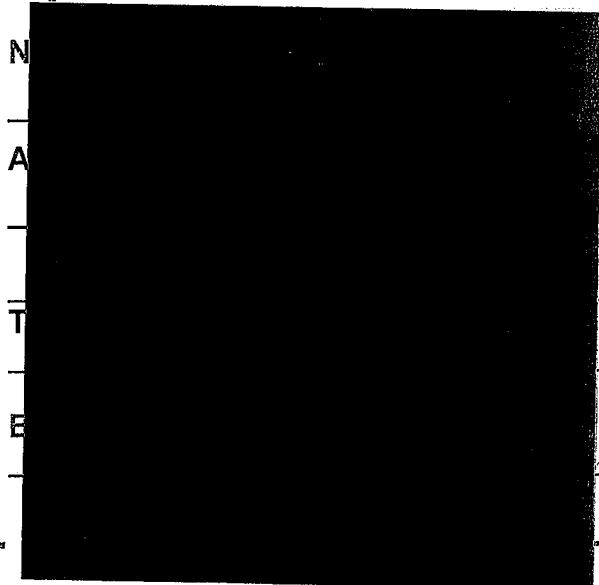
- The City should allow additional off-premises digital signs and with less restrictions
- The City should allow additional off-premises digital signs and using restrictions already in place
- The City should allow additional off-premises digital signs and with greater restrictions (such as longer dwell times, lower intensity levels, etc.)
- The City should not allow additional off-premises digital signs
- Undecided

*[Handwritten signature]*

**ADDITIONAL COMMENTS:**

*The City SHOULD NOT ALLOW ANY DIGITAL OFF-PREMISES SIGNS. ESPECIALLY ON THE SCENIC CORRIDORS*

**Optional:**



*ret*