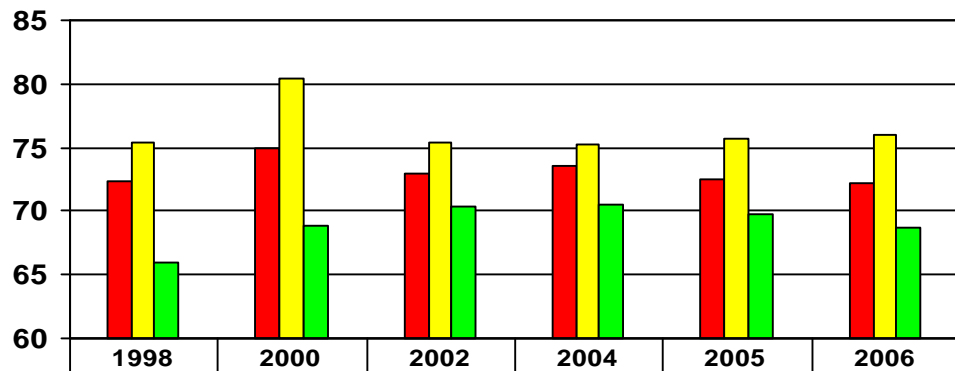
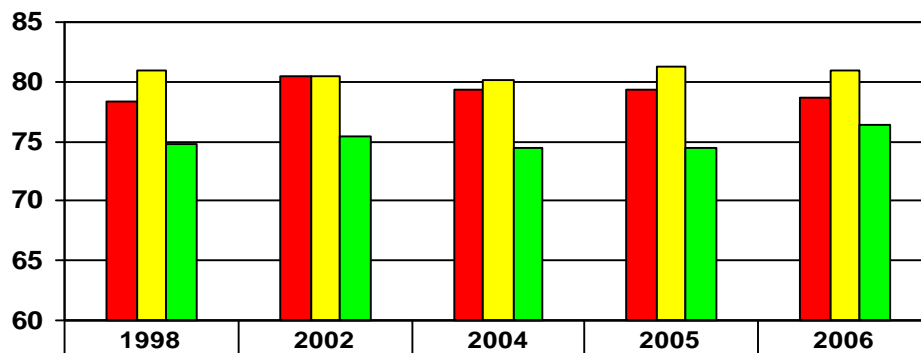


## Bexar County Life Expectancy at birth, by race and sex



<span style="color: red;">■</span> Hispanic Male	72.3	75.0	73.0	73.6	72.5	72.2
<span style="color: yellow;">■</span> Non Hispanic White Male	75.4	80.4	75.3	75.2	75.7	76.0
<span style="color: green;">■</span> African American Male	65.9	68.9	70.4	70.5	69.8	68.7



<span style="color: red;">■</span> Hispanic Female	78.4	80.4	79.3	79.3	78.7
<span style="color: yellow;">■</span> Non Hispanic White Female	81.0	80.5	80.2	81.3	81.0
<span style="color: green;">■</span> African American Female	74.7	75.5	74.5	74.5	76.4

Life expectancy at birth is the average number of years a newborn infant would be expected to live if health and living conditions at the time of its birth remained the same throughout its life. It is said to reflect the health of the County. Although life expectancy is a good starting point for discussing mortality patterns, it is important to note two significant limitations of this measure. First, mortality conditions often change over time, so this measure may not reflect the actual experience. The second limitation of life expectancy as a mortality index is its failure to reveal anything about the distribution of deaths across ages.

The chart below highlights this distribution of deaths across ages only 36% of Hispanic males live to 75 years or older compared to 55% for White non Hispanic males. Only 29% of Bexar Counties African American males live to 75 years or older compared to 55% for WNH males.

John Berlanga MPA

## Bexar County 2006 Deaths by Age Distribution

Age Group	White Non Hispanic Females	White Non Hispanic Males	Hispanic Females	Hispanic Males	African American Females	African American Males
25-34	0%	1%	2%	4%	2%	5%
35-44	1%	3%	3%	8%	5%	5%
45-54	5%	8%	7%	13%	10%	14%
55-64	8%	12%	11%	15%	14%	19%
65-74	13%	17%	15%	17%	14%	19%
75 and older	71%	55%	56%	36%	50%	29%