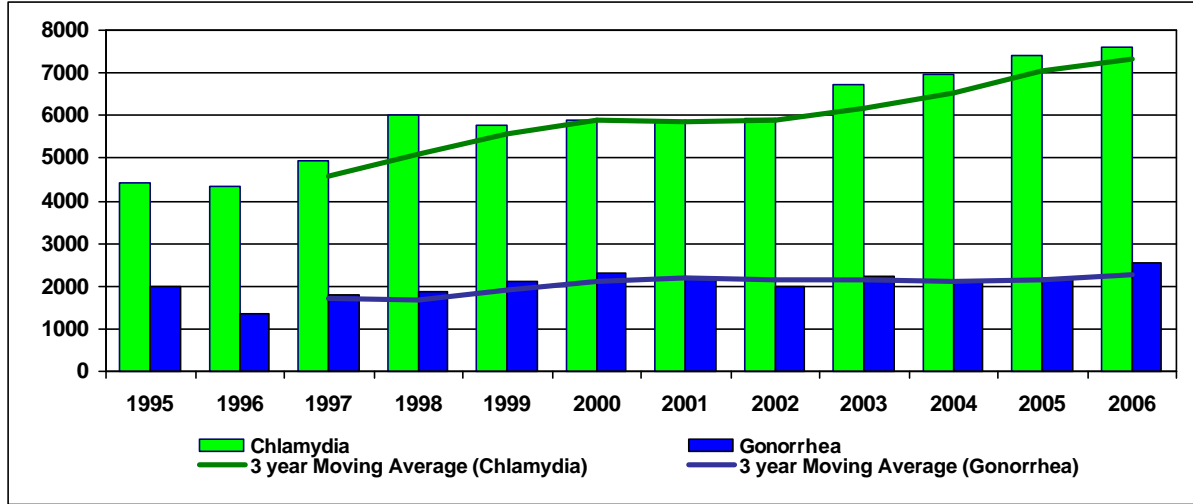


# Gonorrhea & Chlamydia Cases, Bexar County

(Newly reported cases by year)



Chlamydia Cases, Bexar County, 2006 (Newly reported in 2006)		
CATEGORY	NUMBER	PERCENT
Total	7594	100.0%
<b>Chlamydia by Sex <sup>1</sup></b>		
Male	1951	25.7%
Female	5640	74.3%
<b>Chlamydia by Race / Ethnicity</b>		
Hispanic, All Races	4705	62.0%
White, Non-Hispanic	767	10.1%
Black, Non-Hispanic	1060	14.0%
Asian, Non-Hisp.	21	0.3%
Other	1041	13.7%
<b>Chlamydia by Age</b>		
0 to 14	131	1.7%
15 to 19	2649	34.9%
20 to 24	2728	35.9%
25 to 29	1267	16.7%
30 to 34	433	5.7%
35 to 39	225	3.0%
40 to 49	141	1.9%
50 and over	20	0.3%

<sup>1</sup> Gender was unknown in three cases.

Gonorrhea Cases, Bexar County, 2006 (Newly reported in 2006)		
CATEGORY	NUMBER	PERCENT
Total	2562	100.0%
<b>Gonorrhea by Sex</b>		
Male	1229	48.0%
Female	1333	52.0%
<b>Gonorrhea by Race / Ethnicity</b>		
Hispanic, All Races	1429	55.8%
White, Non-Hispanic	186	7.3%
Black, Non-Hispanic	669	26.1%
Asian, Non-Hisp.	5	0.2%
Other	273	10.7%
<b>Gonorrhea by Age</b>		
0 to 14	50	2.0%
15 to 19	709	27.7%
20 to 24	854	33.3%
25 to 29	457	17.8%
30 to 34	195	7.6%
35 to 39	119	4.6%
40 to 49	130	5.1%
50 and over	48	1.9%

Chlamydia Cases, by year (Newly reported)		
AREA	NUMBER	RATE <sup>1</sup>
Bexar County, 2006	7594	488.17
Texas, 2005	71,621	313.30
United States, 2005	976,445	329.42
<small><sup>1</sup>per 100,000 population using the Census Pop. Estimate by the same year</small>		
<b>Census Population Estimate, by year:</b>		
Bexar County, 2006	1,555,592	
Texas, 2005	22,859,968	
United States, 2005	296,410,404	

Gonorrhea Cases, by year (Newly reported)		
AREA	NUMBER	RATE <sup>1</sup>
Bexar County, 2006	2,562	164.70
Texas, 2005	26,016	113.81
United States, 2005	339,593	114.57
<small><sup>1</sup>per 100,000 population using the Census Pop. Estimate by the same year</small>		
<b>Census Population Estimate, by year:</b>		
Bexar County, 2006	1,555,592	
Texas, 2005	22,859,968	
United States, 2005	296,410,404	