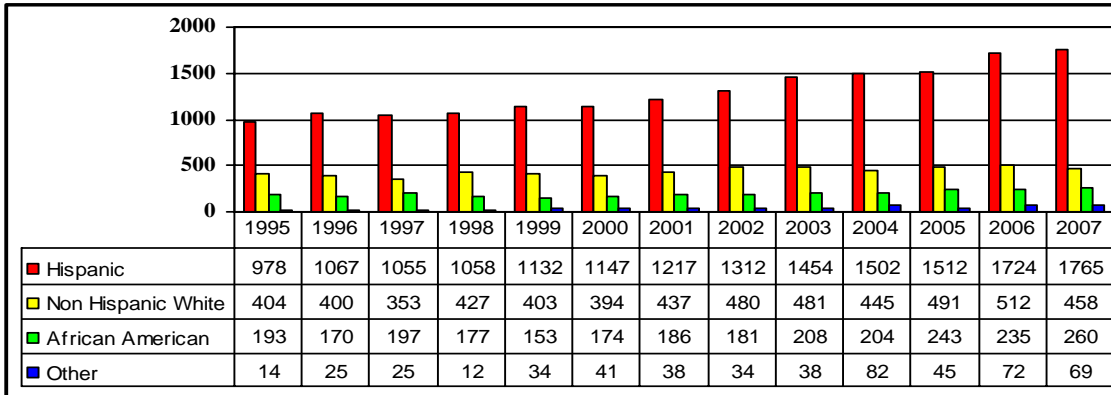
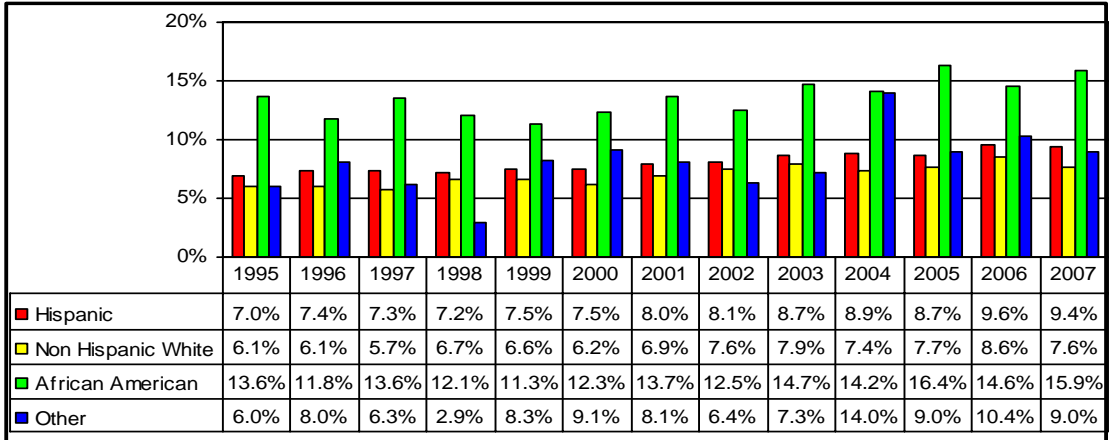


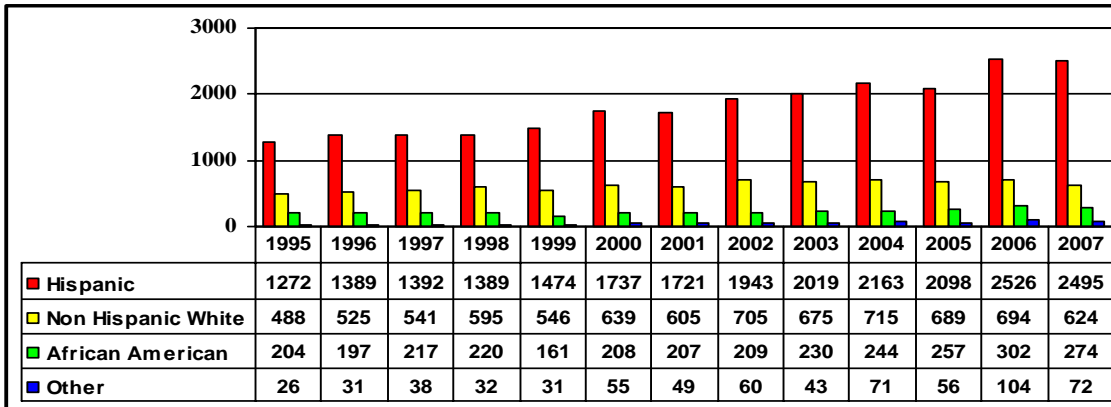
Bexar County Low Birth Weight (<2500 grams) Births by Race & Ethnicity 1995-2007



% Bexar County Low Birth Weight (<2500 grams) Births by Race & Ethnicity 1995-2007



Bexar County Premature <37 (Estimated Gestation) Weeks Births by Race & Ethnicity



% Bexar County Premature <37 (Estimated Gestation) Weeks Births by Race & Ethnicity

