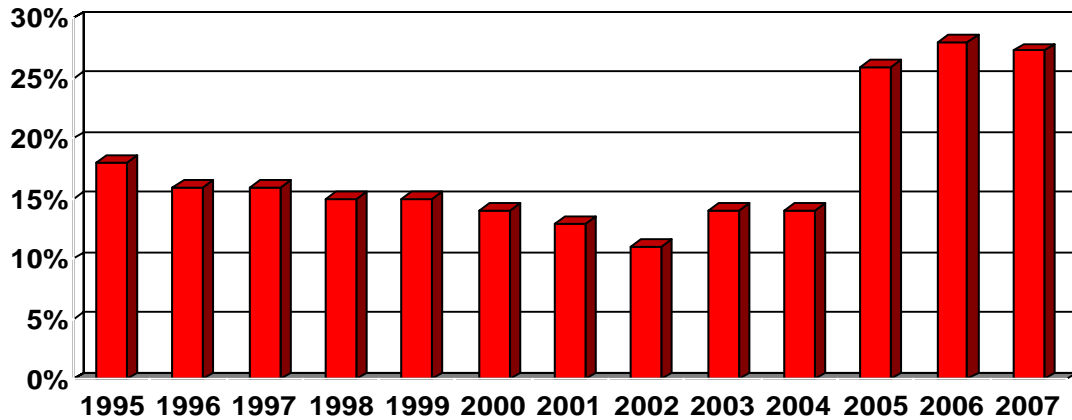


### Bexar County Births % Receiving Late or No Prenatal Care



### Bexar County Month Prenatal Care History

	Births in 2005		Births in 2006		Births in 2007	
1st Month	2,890	11.3%	2,613	10.0%	2,365	8.7%
2nd Month	8,972	35.1%	9,551	36.5%	9,230	34.0%
3rd Month	5,761	22.5%	5,992	22.9%	6,264	23.1%
4th Month	2,465	9.6%	2,715	10.4%	2,721	10.0%
5th Month	1,292	5.1%	1,371	5.2%	1,445	5.3%
6th Month	799	3.1%	873	3.3%	885	3.3%
7th Month	512	2.0%	535	2.0%	610	2.2%
8th Month	298	1.2%	344	1.3%	388	1.4%
9th Month	162	0.6%	195	0.7%	209	0.8%
None	1,226	4.8%	1,332	5.1%	1,163	4.3%
Late or No Prenatal Care	6,754	26.4%	7,365	28.1%	7,421	27.3%
Unknown	1,206	4.7%	673	2.6%	1,876	6.9%
Total	25,583	100%	26,194	100%	27,156	100%

Prior to 2004, the time of entry into prenatal care was determined on the birth certificate by asking pregnant women what month of pregnancy they commenced prenatal care. In November of 2003, there was a nationwide change in the content of birth certificates. Entry into prenatal care was determined by asking post partum women the approximate date they began prenatal care, and calculating the weeks of gestation that prenatal care began by subtracting the date of entry into prenatal care from the calculated gestational age at delivery. Therefore, data on entry into prenatal care prior to and after 2004 are not comparable.