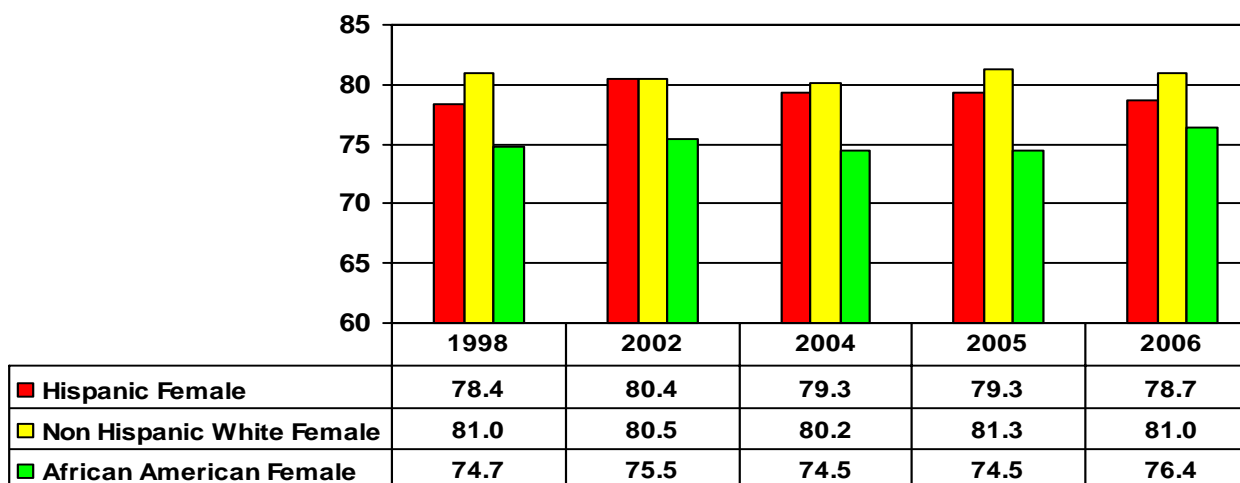
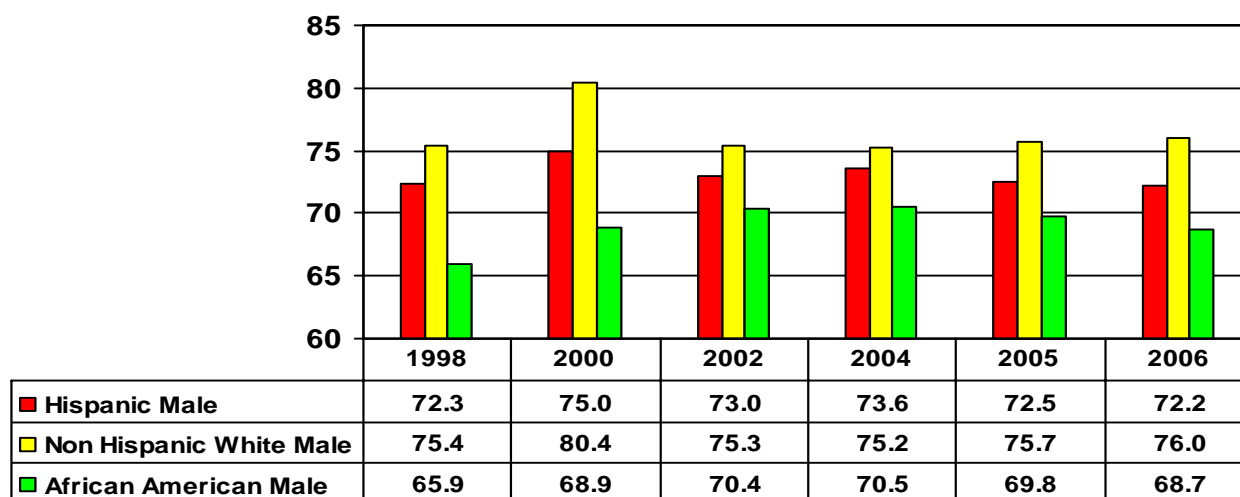


## Bexar County Life Expectancy at Birth, by Race and Sex



Life expectancy at birth is the average number of years a newborn infant would be expected to live if health and living conditions at the time of its birth remained the same throughout its life. It is said to reflect the health of the county. Although life expectancy is a good starting point for discussing mortality patterns, it is important to note two significant limitations of this measure. First, mortality conditions often change over time, so this measure may not reflect the actual experience. The second limitation of life expectancy as a mortality index is its failure to reveal anything about the distribution of deaths across ages.

The chart below highlights this distribution of deaths across ages. Seventy one percent of Non Hispanic White Females live to 75 years and older, only 29% of Bexar County's African American males live to 75 years or older.

## Bexar County 2006 Deaths by Age Distribution

Age Group	Non Hispanic White Females	Hispanic Females	Non Hispanic White Males	African American Females	Hispanic Males	African American Males
25-34	0%	2%	1%	2%	4%	5%
35-44	1%	3%	3%	5%	8%	5%
45-54	5%	7%	8%	10%	13%	14%
55-64	8%	11%	12%	14%	15%	19%
65-74	13%	15%	17%	14%	17%	19%
75 and older	71%	56%	55%	50%	36%	29%