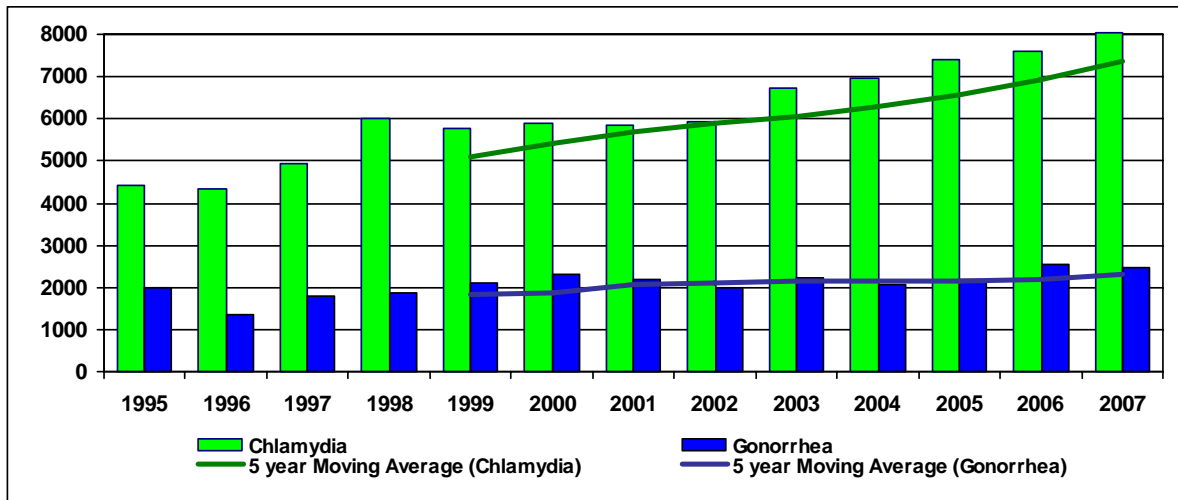


Gonorrhea and Chlamydia Cases, Bexar County (newly reported cases by year)



Chlamydia Cases, Bexar County, 2007 (newly reported in 2007)		
CATEGORY	NUMBER	PERCENT
Total	8054	100.0%
<b>Chlamydia by Sex</b>		
Male	2025	25.1%
Female	6029	74.9%
<b>Chlamydia by Race / Ethnicity</b>		
Hispanic, All Races	5048	62.7%
White, Non-Hispanic	796	9.9%
Black, Non-Hispanic	1134	14.1%
Asian, Non-Hisp.	23	0.3%
Other	1053	13.1%
<b>Chlamydia by Age</b>		
0 to 14	138	1.7%
15 to 19	2696	33.5%
20 to 24	3052	37.9%
25 to 29	1270	15.8%
30 to 34	491	6.1%
35 to 39	197	2.4%
40 to 49	162	2.0%
50 and over	41	0.5%
Unknown	7	0.1%

Gonorrhea Cases, Bexar County, 2007 (newly reported in 2007)		
CATEGORY	NUMBER	PERCENT
Total	2465	100.0%
<b>Gonorrhea by Sex</b>		
Male	1252	50.8%
Female	1213	49.2%
<b>Gonorrhea by Race / Ethnicity</b>		
Hispanic, All Races	1298	52.7%
White, Non-Hispanic	199	8.1%
Black, Non-Hispanic	683	27.7%
Asian, Non-Hisp.	4	0.2%
Other	281	11.4%
<b>Gonorrhea by Age</b>		
0 to 14	46	1.9%
15 to 19	694	28.2%
20 to 24	790	32.0%
25 to 29	405	16.4%
30 to 34	208	8.4%
35 to 39	120	4.9%
40 to 49	149	6.0%
50 and over	53	2.2%
Unknown	0	0.0%

Chlamydia Cases, by year (newly reported)		
AREA	NUMBER	RATE <sup>†</sup>
Bexar County, 2007	8,054	505.11
Texas, 2006	75,543	321.35
United States, 2006	1,030,911	344.33
† per 100,000 population using the Census Pop. Estimate by the same year		
<b>Census Population Estimate, by year:</b>		
Bexar County, 2007		1,594,493
Texas, 2006		23,507,783
United States, 2006		299,398,484

Gonorrhea Cases, by year (newly reported)		
AREA	NUMBER	RATE <sup>†</sup>
Bexar County, 2007	2,465	154.59
Texas, 2006	30,449	129.53
United States, 2006	358,366	119.70
† per 100,000 population using the Census Pop. Estimate by the same year		
<b>Census Population Estimate, by year:</b>		
Bexar County, 2007		1,594,493
Texas, 2006		23,507,783
United States, 2006		299,398,484

Bexar County Chlamydia and Gonorrhea data extracted from local STD-MIS database 3-27-2008

Bexar County was ranked 18th by number of Chlamydia cases reported in the U.S. in 2006, of all counties and independent cities.

Bexar County was ranked 22nd by number of Gonorrhea cases reported in the U.S. in 2006, of all counties and independent cities.