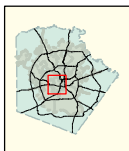
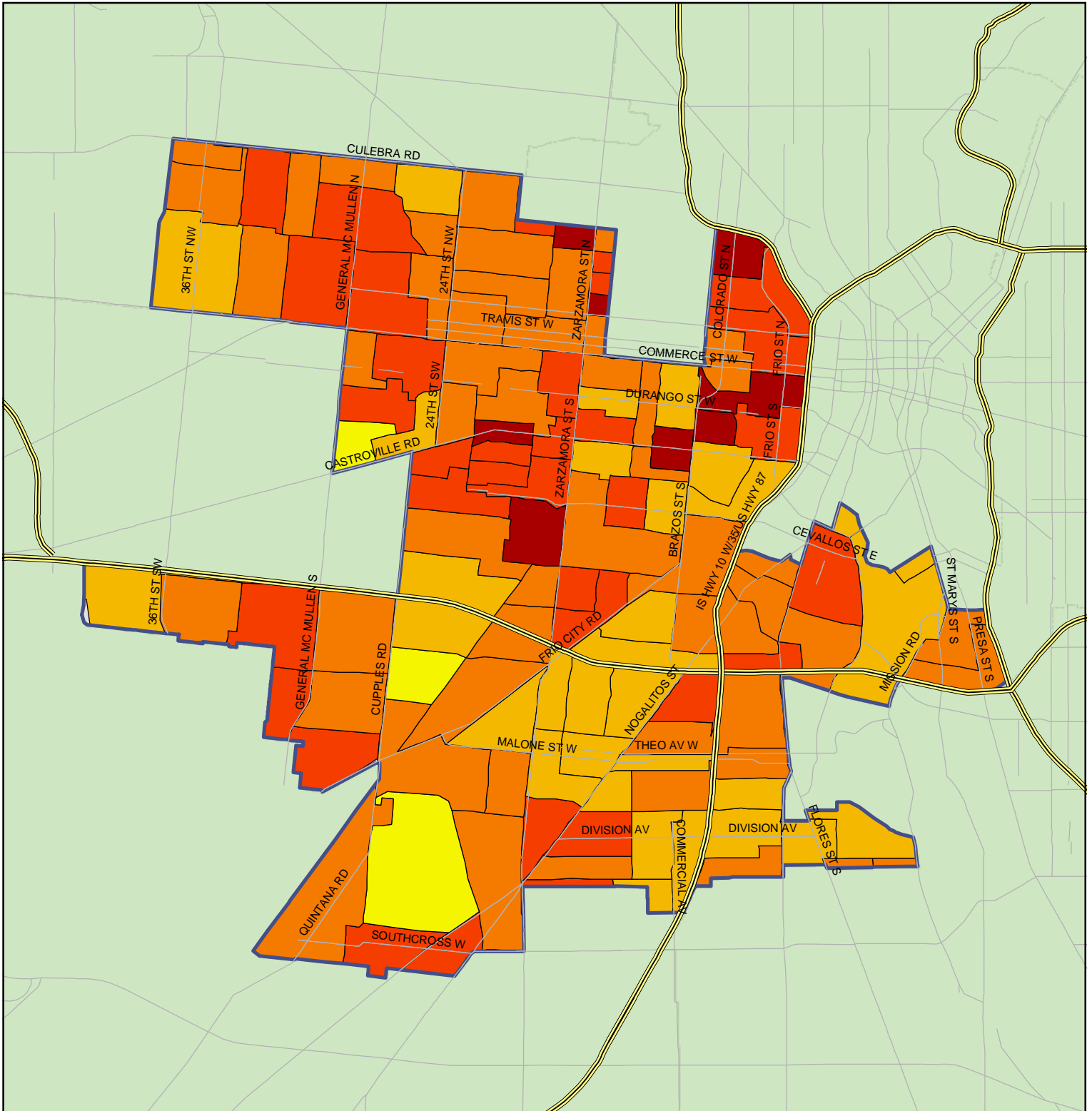
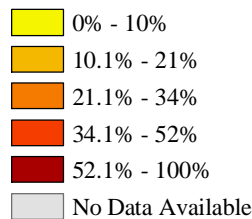


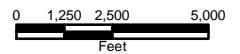
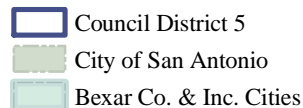
# Percent of People in Poverty by 2000 Census Block Groups Council District 5



### Percent in Poverty



### Legend



Data Source: City of San Antonio Enterprise GIS, Bexar Metro 911, Bexar Appraisal District, U.S. Census Bureau

"This Geographic Information System Product, received from The City of San Antonio is provided "as is" without warranty of any kind, and the City of San Antonio expressly disclaims all express and implied warranties, including but not limited to the implied warranties of merchantability and fitness for a particular purpose. The City of San Antonio does not warrant, guarantee, or make any representations regarding the use, or the results of the use, of this information provided to you by the City of San Antonio in terms of correctness, accuracy, reliability, timeliness or otherwise. The entire risk as to the results and performance of any information obtained from the City of San Antonio is entirely assumed by the recipient."

\*Please contact the responsible City of San Antonio Department for specific determinations.\*

City of San Antonio Planning Department GIS Manager: Woody Woodruff, woodruff@sanantonio.gov. Maps may be ordered at: (210) 207-7873

Map Created by: Rachel Geyster  
Map Creation Date: March 13, 2003  
Map file location: G2UJ\CensusMapBook\2003Projects\CD5PovertyPercent.mxd  
PDF filename: 0303GR55

### City of San Antonio Planning Department

Emil R. Moncivais, AICP, AIA  
Director, Planning Department  
Municipal Plaza - 3rd Floor  
114 W. Commerce  
San Antonio, Texas 78283

