

# Eastern Triangle Community Plan Public Meeting

Rebecca Paskos, Senior Planner  
Neighborhood & Urban Design Division  
Planning & Community Development Department  
City of San Antonio  
(210) 207-7816

May 31, 2008

# Meeting Purpose

- Overview of COSA Community and Neighborhood Planning
- Review Planning Efforts in Eastern Triangle Community Area
- SWOT Group Work Session

# What is a Community Plan?

- A collaborative effort with many different community stakeholders
  - Based on the community's goals, current land uses, best planning practices, input from government agencies, and the City's Master Plan Policies
- Completed plans represent the collective vision for the community
  - Preferred method and form of future growth
  - Ideas for community improvement
  - Address: land use, community facilities, and transportation

# Plan Components

- Land Use
- Housing
- Economic Development
- Transportation and Infrastructure
- Parks
- Community Facilities
- Crime and Public Safety

# After Plan Adoption

- **Benefits after plan adoption**
  - The future land use plan will be utilized by the City when evaluating zoning decisions
  - Priority projects are recommended as part of the Annual Improvement Project Report to City Council
  - As a component of the City Master Plan, plans should be consulted in reviewing projects for capital projects, bonds, and consideration of new programs.
- **Adopted plans serve as a guide and do not include a specific financial commitment by the City**

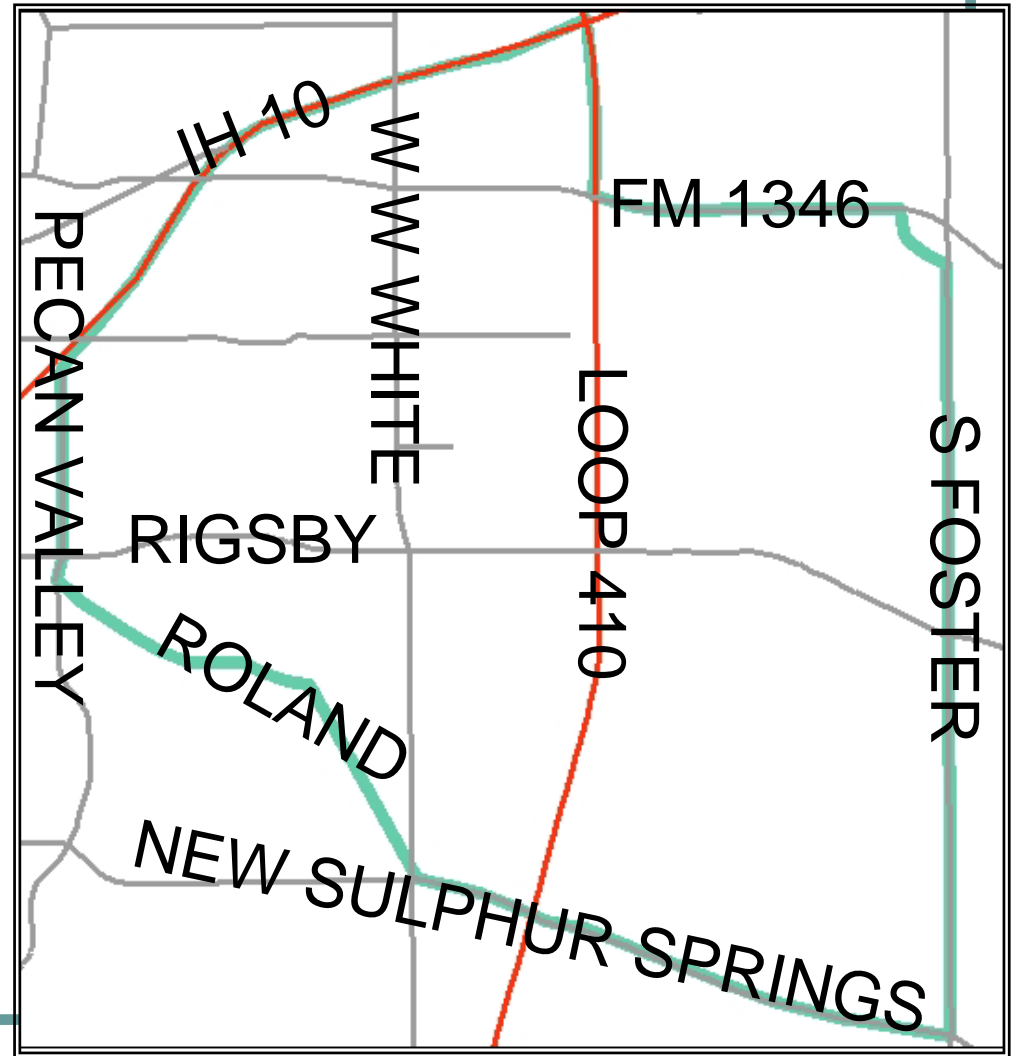




# Eastern Triangle

# Boundaries

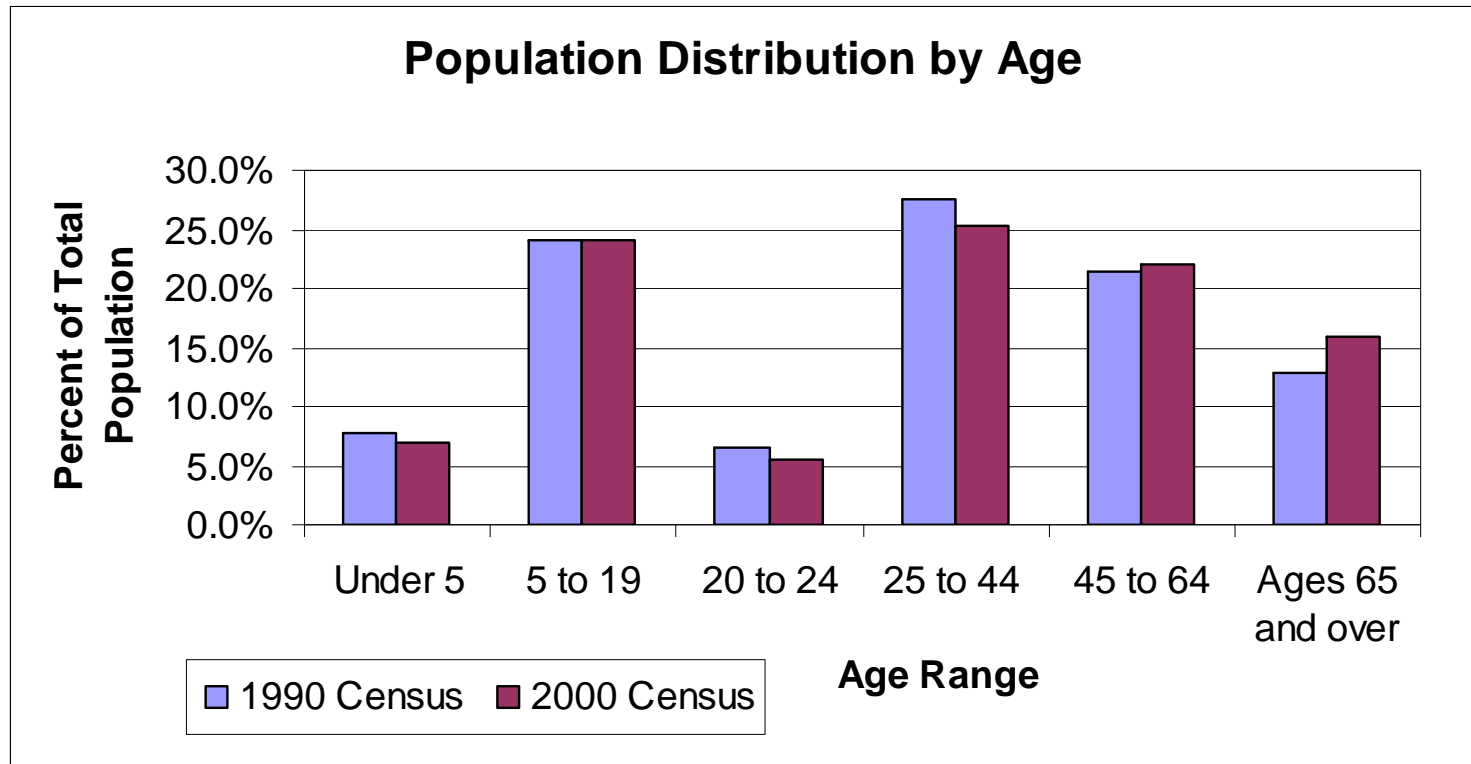
- North: IH 10, Loop 410, and FM 1346
- East: S. Fosters Road
- South: New Sulphur Springs, Southcross, and Roland
- West: Pecan Valley and Roland



# Background Information

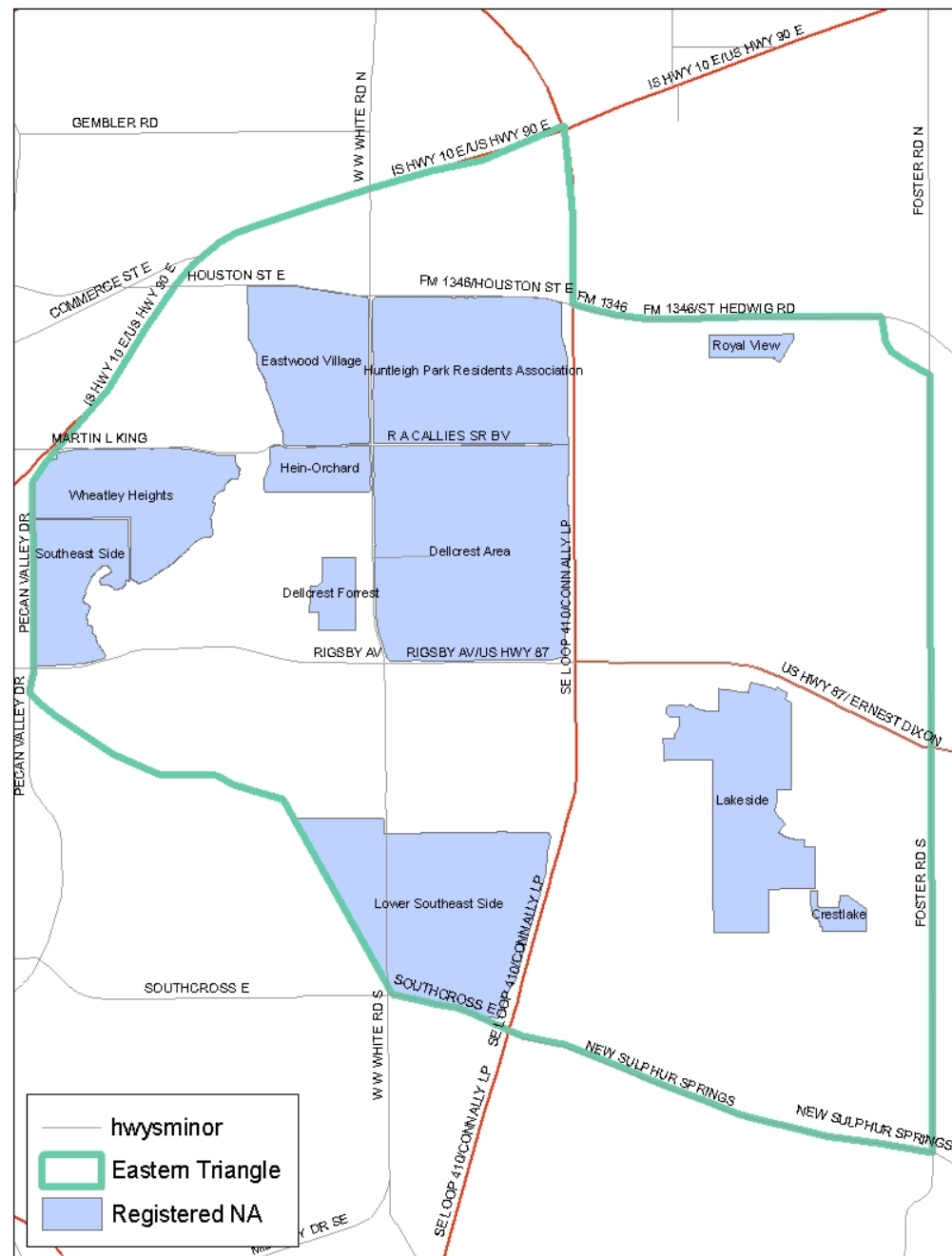
	1990 Census	2000 Census	Percent Change
<b>Total Population</b>	<b>23,902</b>	<b>24,780</b>	<b>3.7%</b>
Average Household size	2.86	2.76	
Hispanic	24.7%	36.2%	51.7%
Anglo	27.5%	20.0%	-24.4%
African American	47.1%	41.9%	-7.9%
Other non-white	0.7%	1.9%	195.7%
Male	46.3%	45.9%	
Female	53.7%	54.1%	
Median Age	N/A	37	
Individuals living below the poverty level	22.7%	19.3%	-11.8%

# Population Age

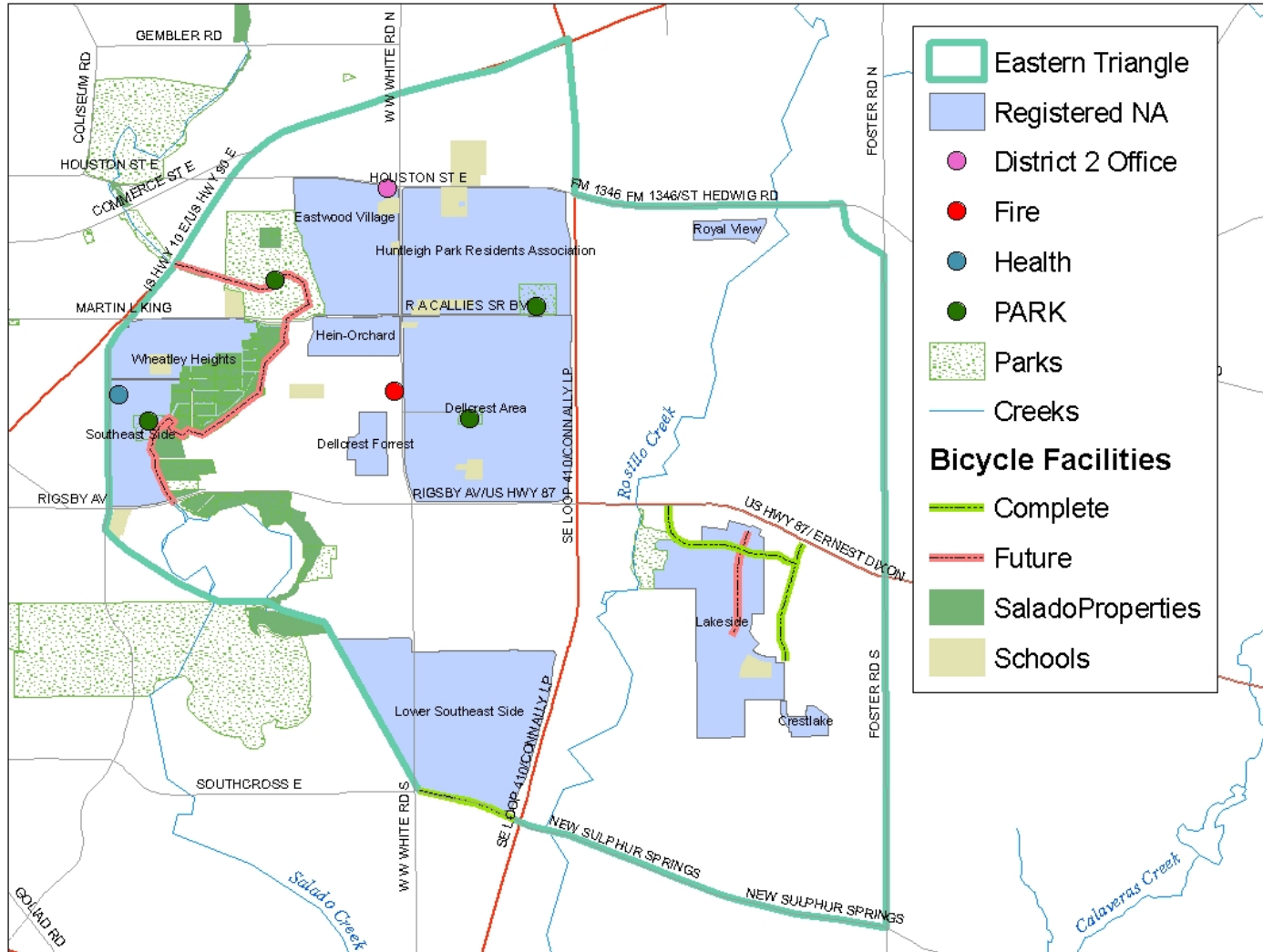


# Neighborhood Associations

- 11 registered neighborhood associations
- Capacity building for unincorporated neighborhoods



# Community Facilities



# 2007-2012 Bond Program

- **N. Hein (W.W. White – W. Hein) and W. Hein (Rice - N. Hein) \$6,136,000**  
Reconstruct N. Hein from W. W. White to W. Hein and W. Hein from Rice to N. Hein, with curbs, sidewalks, driveway approaches and necessary drainage improvements.
- **Orchard (W.W. White to W. Hein) \$3,733,000**  
Reconstruct Orchard from W.W. White to W. Hein with curbs, sidewalks, driveway approaches and necessary drainage improvements.
- **W.W. White Area Streets, Phase II \$9,089,000**  
Construct a storm system along Holmgreen Street to provide drainage for an area between Rice Road and Holmgreen. Project will consist of an underground system and an open channel. Street reconstruction will be required for Brusk Road from Rice to Goodell, Goodell from Brusk to Schumacher, Schumacher from Rice to Holmgreen, and Holmgreen from W.W. White to turn just west of My Lane.
- **M.L. King Park \$250,000**  
Development of the park north of Salado Creek to include a group pavilion and parking lot.



# Planning Process Thus Far

- Call for community plan applications
- Informal planning group made up of neighborhood associations, residents, and business owners formed the Eastern Triangle Master Planning Group, October 2006
- Eastern Triangle application received, February 2007
- COSA reviewed applications and notified selected communities, August 2007
- COSA began to organize community members to begin developing the community plan, March 2008
- Held first Planning Team meeting, April 2008

# Planning Team

- Consists of approximately 30 community leaders including a Chair and 2 Co-Chairs
- Meets twice a month
- Assist in the land use verification
- Assist in the development of the plan content
- Recommend plan adoption to City Council
- After adoption, continue to work towards plan implementation
- After adoption, publicize plan to new and current community members

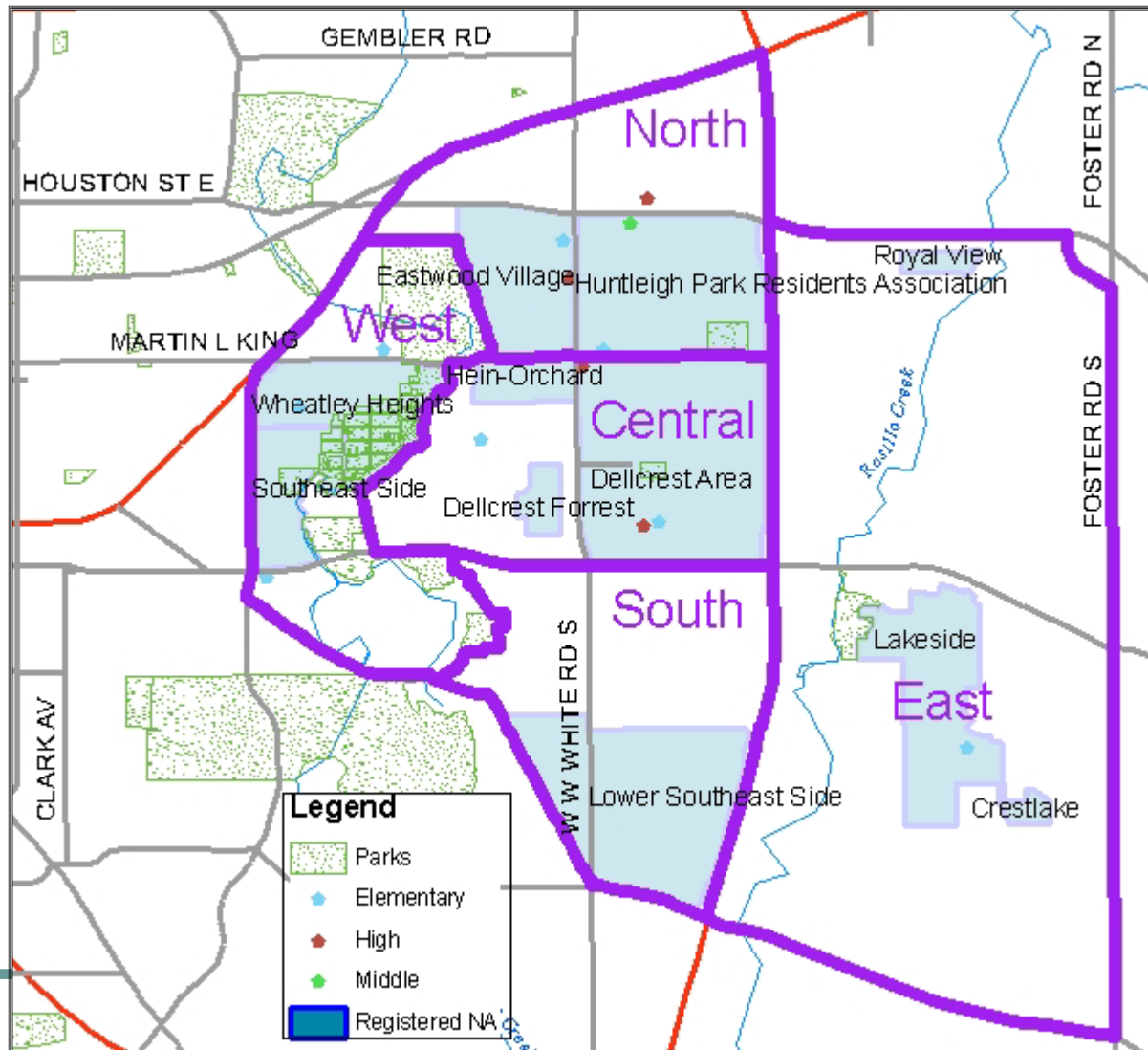
# Technical Committee

- Consists of all City departments, VIA, Metropolitan Planning Organization, Bexar County, TXDOT, and SAISD
- Provide technical knowledge, recommendations, and input
- May present information at meetings as needed
- Identify implementation strategy and action steps
- Assist in the final review of the document



Strengths, Weaknesses,  
Opportunities, and Threats (SWOTs)

# Districts



# SWOT Process

- What is positive about the community and what needs work?
- Helps residents brainstorm about internal and external factors affecting the neighborhood's goal of being a safe, dynamic and sustainable community.
- We need to know **WHERE** community strengths and weaknesses are located
- Information will be used in later meetings as to develop strategies to build on the strengths and reduce the weaknesses

# Planning Timeline

- June 2008:
  - Complete land use verification
- September 2008:
  - Complete plan workshops
- October 2008:
  - First draft presented to community for input
- November 2008:
  - Interdepartmental/Agency review and Planning Team review
- January 2009:
  - Final draft reviews and Open House Forum
- March 2009:
  - Plan adoption

# Next Steps: Public Meetings

- 1<sup>st</sup> public meeting (SWOTs) – May 31<sup>st</sup>, 9:00 am to 12:00 pm, Boys and Girls Club
- 2<sup>nd</sup> public meeting (Land Use Planning) – July 2008
- 3<sup>rd</sup> public meeting (Progress Report) – September 2008
- 4<sup>th</sup> public meeting (Open House) – January 2009

# Next Steps: Planning Workshops

- Crime & Public Safety – June 2008
- Economic Development & Housing – July 2008
- Transportation, Infrastructure, & Drainage – August 2008
- Parks & Community Facilities – August 2008
- Business Owners meeting – September 2008

# Contact Information

Patrick Howard, AICP  
Assistant Director  
Planning & Community  
Development Department  
[Patrick.Howard@sanantonio.gov](mailto:Patrick.Howard@sanantonio.gov)  
207-7833

Nina Nixon-Mendez, AICP  
Planning Manager  
Neighborhood & Urban Design  
Division  
[nnmendez@sanantonio.gov](mailto:nnmendez@sanantonio.gov)  
207-2893

Rebecca Paskos  
Project Lead, Senior Planner  
[Rebecca.Paskos@sanantonio.gov](mailto:Rebecca.Paskos@sanantonio.gov)  
207-7816

Andrea Gilles  
Senior Planner  
[Andrea.Gilles@sanantonio.gov](mailto:Andrea.Gilles@sanantonio.gov)  
207-2736

Lauren Edlund  
Planner  
[Lauren.Edlund@sanantonio.gov](mailto:Lauren.Edlund@sanantonio.gov)  
207-0157

# Let's Get Started

- **Ground Rules**
  - Be courteous
  - Share your ideas
  - Be specific and concise
  - Listen to others