

DOCKLESS VEHICLES

JOHN JACKS, DIRECTOR
CENTER CITY DEVELOPMENT & OPERATIONS
OCTOBER 11, 2018

COMPANIES CURRENTLY OPERATING

1,700 BIRD 

850 LIME  Lime

453 BLUE DUCK  BLUE DUCK

OTHER COMPANIES INTERESTED IN LAUNCHING SERVICE

RAZOR USA ZAGSTER
SPIN SKIP

SIX MONTH PILOT PROGRAM



\$10 per vehicle fee with a vendor application fee of \$500

No cap on number of vehicles / number of vendors



No geographic limitations

SIX MONTH PILOT PROGRAM

(CONTINUED)



San Antonio based fleet manager

Monthly reporting requirements on usage, violations and trip data



Vendor app must educate on rider safety, areas where riding is prohibited and safe/lawful parking

SAFE RIDING RECOMMENDATIONS



16+

Minimum age
requirement of
16+



SPEED
LIMIT
35

Ride on
roads with
speed limits
of 35mph or
less



Utilize bike
lanes when
available



City Parks /
Trailways -
motorized
vehicles
prohibited

SAFE RIDING RECOMMENDATIONS

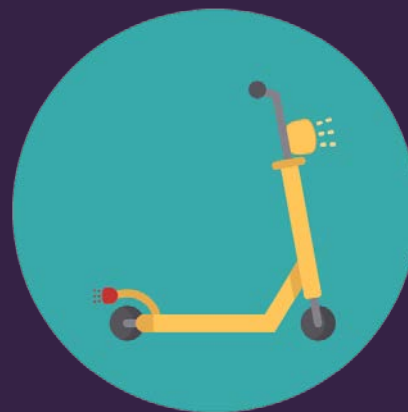
(CONTINUED)



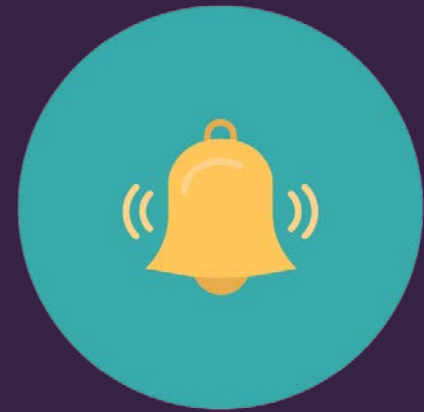
Maintain a 2-ft.
walk path for
pedestrian on
sidewalks



Always yield
to
pedestrians



Have a light on
the front and a
red light on the
back



Have a bell,
horn or other
sound
mechanism

PARKING



Orderly and upright to allow pedestrian access

1

3ft. clearance for pedestrians on sidewalks

2

May park in a bike rack

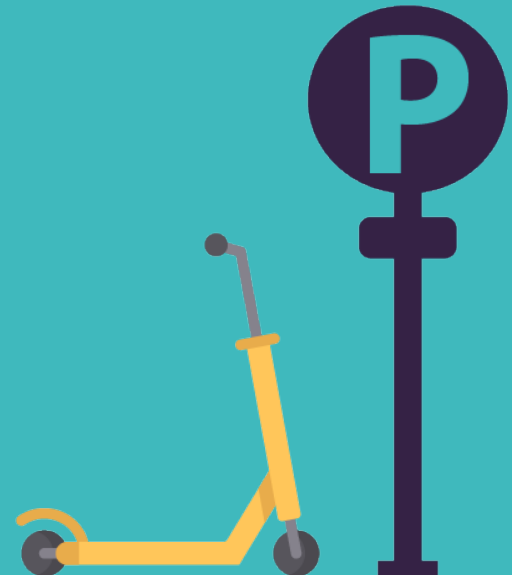
3

4

Parking in SWell Cycle station is prohibited

5

City Parks – designated parking areas only



PARKING

(CONTINUED)



No parking within 8' of a building entrance

6

No parking in loading zones

7

No parking within 4' of street furniture

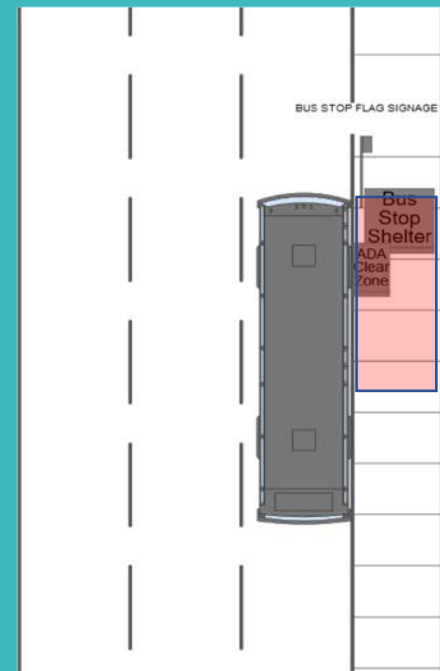
8

9

Do not block curb ramps, entryways or driveways

10

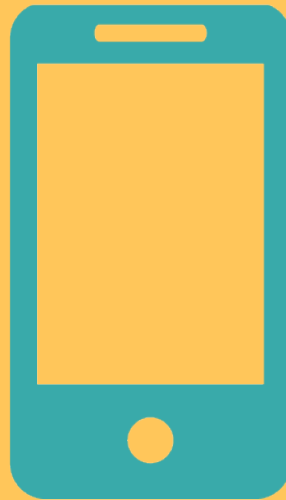
No parking within 15' of a bus stop pole or bus shelter



COMPLIANCE



Vendors have 2 hours to correct violations & 1 hour to correct violations in prohibited areas



24-hour customer service phone number



Vendors required to lock vehicles reported as broken and remove within 2 hours

PROGRAM ASSESSMENT

Violations, 311 calls & accident reports



Usage and trip data



Staff time & cost related to the program



Stakeholder input:
Vendors, riders, other stakeholders

RIDER EDUCATION PROGRAMS

VIA CENTRO PLAZA



Dockless Vehicle REGULATIONS

THE SAFE WAY IS THE BEST WAY

HAVE YOU TRIED OUT A DOCKLESS VEHICLE YET?
Here's what you need to know before you hop on and scoot away:

- Know where you can/cannot ride
- How to be a safe rider
- Sidewalk parking rules
- Information on reporting

*Flip over for more information!







PEDESTRIAN FIRST

Always yield to pedestrians

RIDER REQUIREMENTS

- Must be 16+
- Helmets are highly recommended but not required

WHERE TO RIDE

- Bike lanes: must be used when available
- Sidewalk: maintain a 2ft. walk path for pedestrians
- Street: only on streets 35mph or less

PROHIBITED AREAS

- Alamo Plaza
- Market Square
- La Villita
- Parks (including creek ways & trails)
- Main Plaza
- River Walk

PARKING RESPONSIBLY

All vehicles should be parked upright and parked neatly.

Sidewalk Parking:

- Must have 3ft. clearance for pedestrian use
- Must have 4ft. clearance from street furniture that requires pedestrian access
- Must have 8ft. clearance from building entrances & bus shelters/stops
- Must not be in commercial or pedestrian loading zones
- Must not interfere with access to ramps, entryways or driveways

Bike Rack Parking:


- Parking in bike racks allowed
- Must not park in B-Cycle docking stations

REPORTING

Please report any parking violations or damaged vehicles to the vehicle provider or by utilizing 311 call center.




THIS IS HOW SAN ANTONIO E-SCOOTERS!


✓ Yield to a 7ft. walk path for pedestrians and always park to permit them.

✗ We park scooters with our kick-stands deployed from pedestrian areas, building entrances, ramps, driveways, etc.



✗ We don't take over pedestrians.


✗ We don't park scooters in the way of parked vehicles in the middle of streets.



✓ We use BIRD's bike racks available at area retailers. In city with bike racks present.



✗ We don't park scooters in bike lanes or streets or leave scooters lying on the ground.

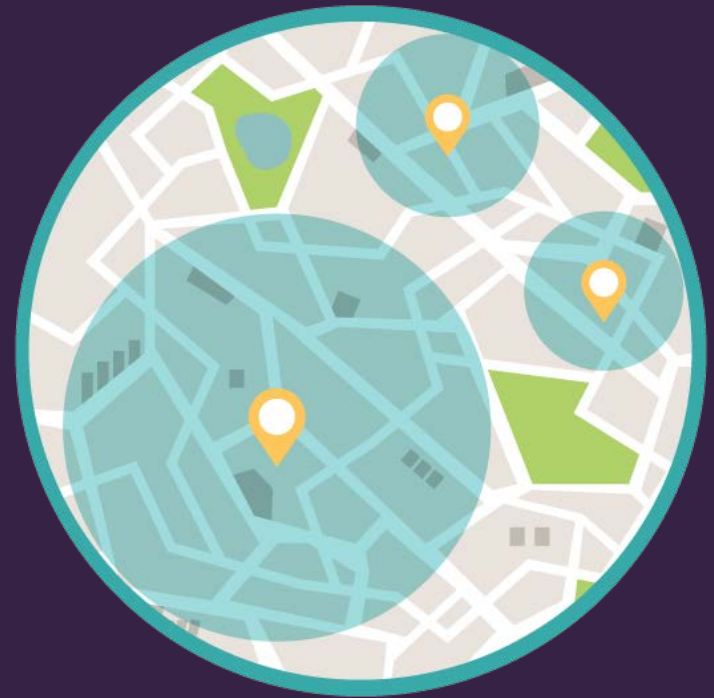



Please report any parking violations or damaged vehicles to the vehicle provider or by utilizing 311 call center.

POTENTIAL ENHANCEMENTS

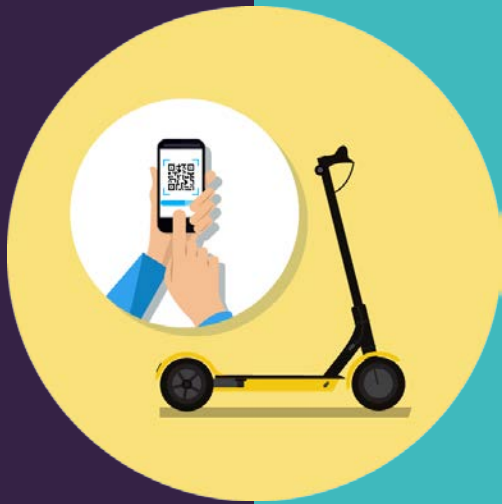


Dedicated vehicle
parking



Geofencing that will prevent
riding and parking in
sensitive areas





DOCKLESS VEHICLES

JOHN JACKS, DIRECTOR
CENTER CITY DEVELOPMENT & OPERATIONS
OCTOBER 11, 2018