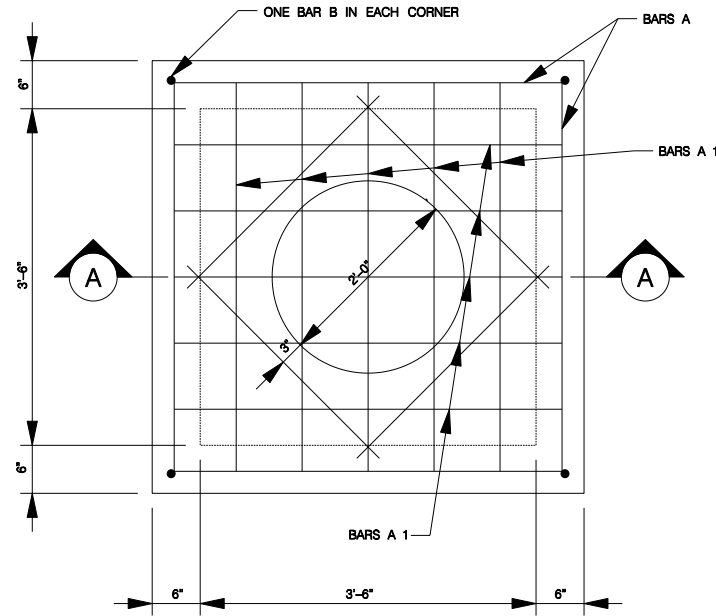


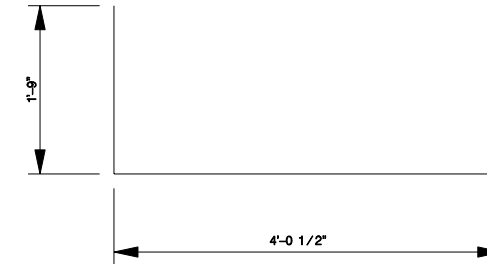
MANHOLE LID & RING DETAIL

SCALE: 1 : 16



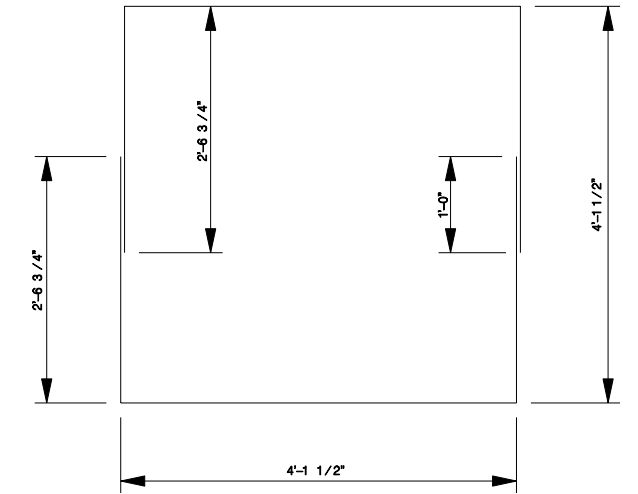
TOP SLAB PLAN VIEW

SCALE: 1\"/>



BARS A

SCALE: 1\"/>



BARS C

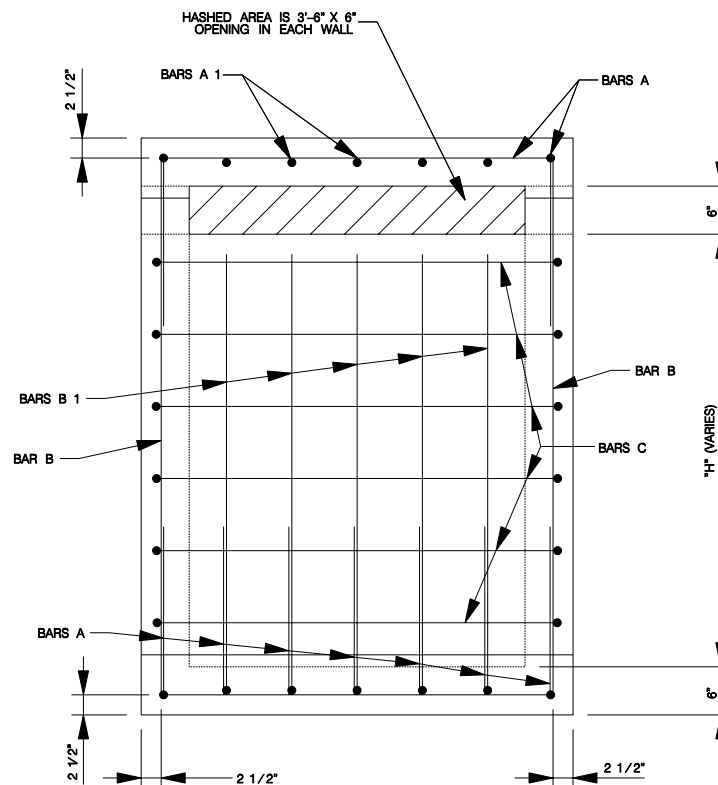
SCALE: 1\"/>

NOTES FOR MANHOLE LID AND RING

1. FOR LID DESIGN OUTSIDE OF CITY OF SAN ANTONIO, DELETE "SAN ANTONIO PUBLIC WORKS DEPT."
2. CASTING NUMBER AND MANUFACTURER'S I.D. ON LID AND RING.
3. LOAD BEARING CAPABILITY OF HS-20 MINIMUM.
4. THE LOAD BEARING SURFACES SHALL BE MACHINE GROUND.
5. THE COMBINED WEIGHT OF THE MANHOLE RING AND COVER MUST BE AT LEAST 260 LBS.

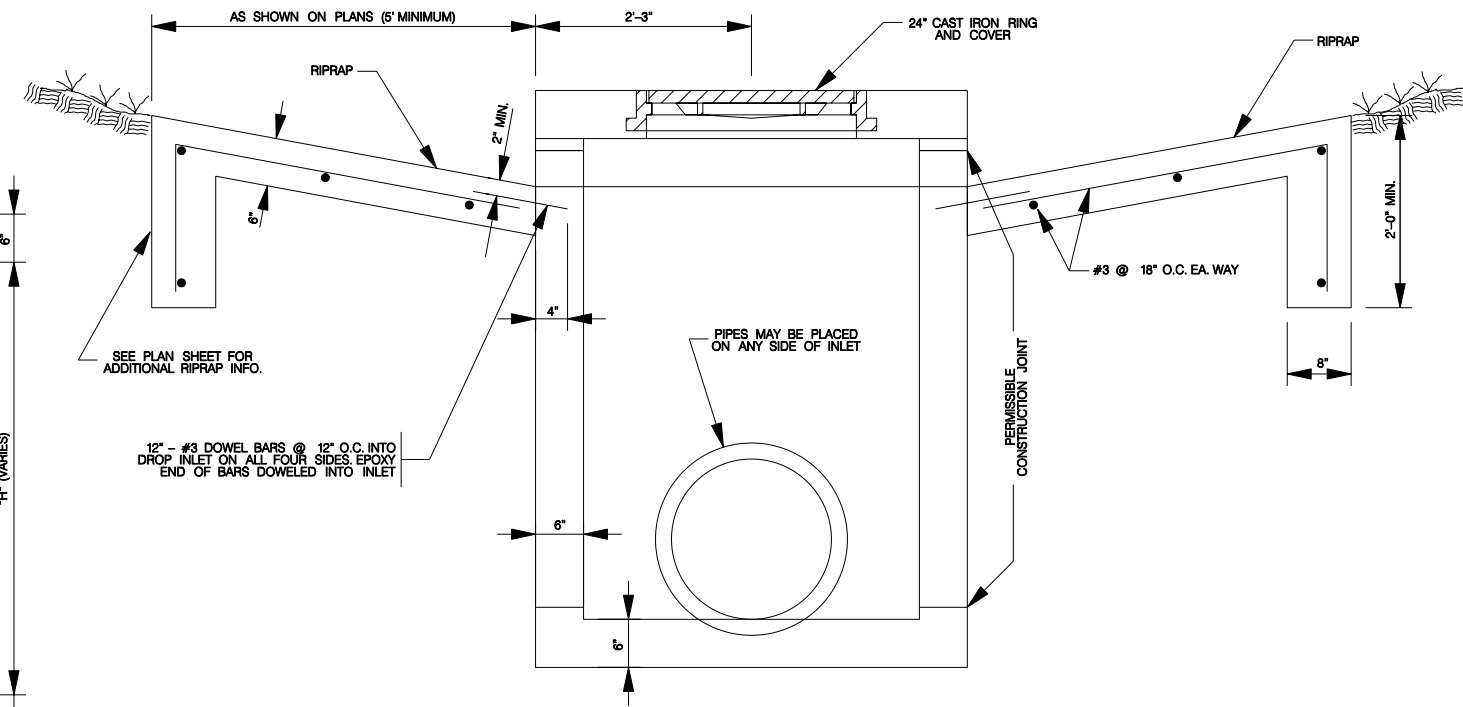
ESTIMATED QUANTITIES FOR "H" = 4'-6"					
REINFORCING STEEL					
BAR	NO.	SIZE	SPACE	LENGTH	WEIGHT
A	18	4	8" +/-	7'-6 1/2"	79
A 1	10	4	8" +/-	4'-0 1/2"	27
B	4	4	AS SHOWN	5'-7"	15
B 1	20	4	8" +/-	4'-7"	61
C	12	4	9" +/-	18'-6"	148
J	4	4	AS SHOWN	2'-8"	6
TOTAL REINFORCING STEEL					336 Lbs. *
CLASS A CONCRETE					2.10 CY *

* FOR CONTRACTOR'S INFORMATION ONLY.
QUANTITIES VARY WITH "H".
SEE INLET & MANHOLE SUMMARY SHEETS FOR "H".



SIDE VIEW WALL

SCALE: 1\"/>



SECTION A-A

SCALE: 1\"/>

GENERAL NOTES:

1. ALL BARS INTERCEPTING THE RING AND COVER OPENING AND PIPE OPENINGS. SHALL BE FIELD CUT
2. CONCRETE SHALL BE CLASS "A", 3000 PSI IN 28 DAYS.
3. ALL DIMENSIONS RELATING TO REINFORCING STEEL ARE TO CENTER OF BARS.
4. ALL EXPOSED CORNERS SHALL HAVE 3/4" CHAMFER
5. PAYMENT FOR ALL EXCAVATION, BACKFILLING, CONCRETE, REINFORCING STEEL, RING, AND COVER SHALL BE INCLUDED IN THE UNIT COST OF ITEM 403 "STORM SEWER JUNCTION BOXES AND INLETS".

JANUARY 2005

CITY OF SAN ANTONIO
CAPITAL IMPROVEMENTS MANAGEMENT SERVICES DEPARTMENT

4-WAY INLET STANDARDS

% SUBMITTAL	PROJECT NO.:	DATE:
DRWN. BY: M. BARRERA, P.E.	DSGN. BY:	CHKD. BY:
		SHEET NO. OF