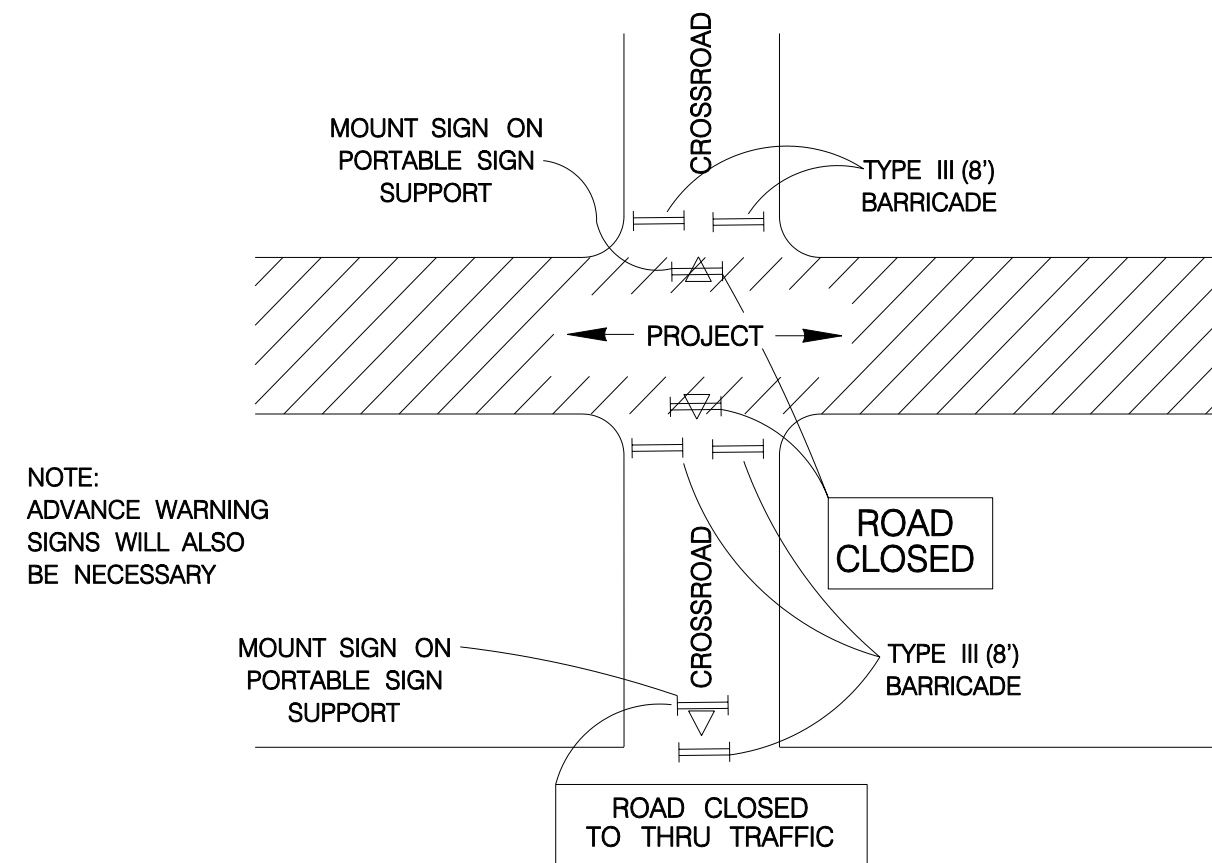


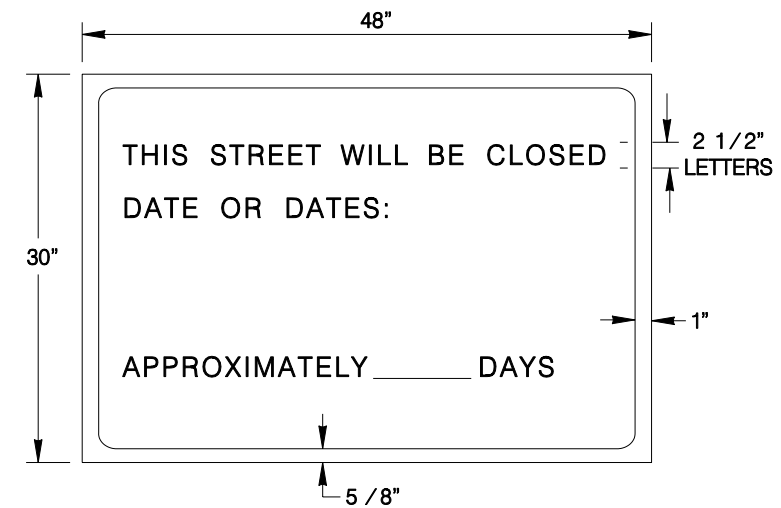
**PROJECT LIMITS FOR CLOSED ROADWAY**

BARRICADES SHALL BE ERECTED COMPLETELY ACROSS ROADWAY. CHANNELIZING DEVICES MAY BE DRUMS, VERTICAL PANELS OR CONES AS SPECIFIED IN THE PLANS

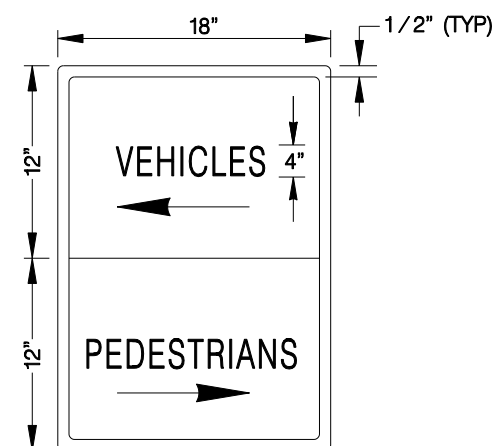


NOTE:  
ADVANCE WARNING  
SIGNS WILL ALSO  
BE NECESSARY

**CROSS STREET SIGNING AND BARRICADING  
TOTALLY CLOSED**

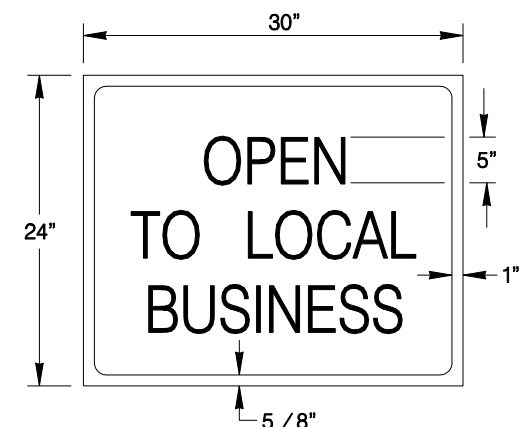


LETTERS- BLACK  
BORDER- BLACK  
BACKGROUND- ORANGE



LETTERS- BLACK  
BORDER- BLACK  
BACKGROUND- ORANGE  
SPACING-3 SIGNS PER BLOCK

DIRECTION OF ARROWS  
ARE REVERSIBLE



LETTERS- WHITE  
BORDER- WHITE  
BACKGROUND- BLUE REFLECTIVE

THE ORIGINAL OF THIS DRAWING WAS SIGNED AND SEALED BY JOHN D. FRIEBELE, #46394 ON 06-20-05 AND IS ON FILE WITH THE TRAFFIC ENGINEERING DIVISION OF THE PUBLIC WORKS DEPARTMENT, CITY OF SAN ANTONIO.

JUNE 2005

CITY OF SAN ANTONIO  
DEPARTMENT OF PUBLIC WORKS

TRAFFIC STANDARDS  
BARRICADE AND CONSTRUCTION  
STANDARDS  
SHEET 2 OF 4

DRWN. BY: A.F.G.	DSGN. BY: E.N.M.	CHKD. BY: J.D.F./E.N.M.	SHEET NO.: OF
% SUBMITTAL	PROJECT NO.:	DATE:	