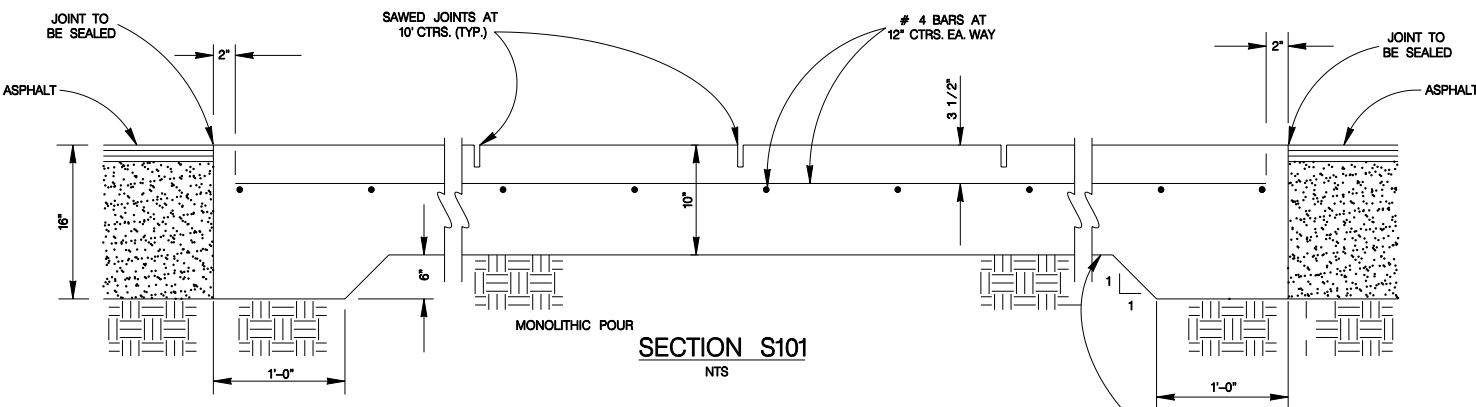
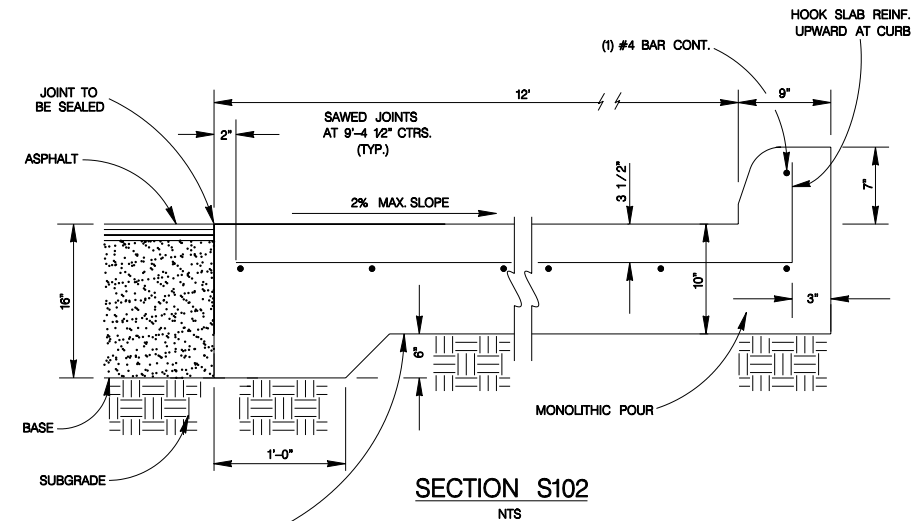


PLAN VIEW
NTS



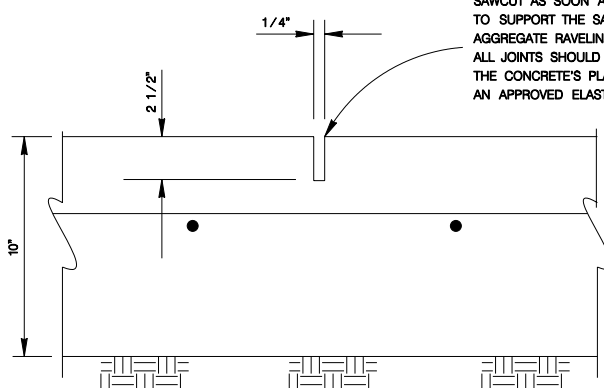
SECTION S101
NTS



SECTION S102
NTS

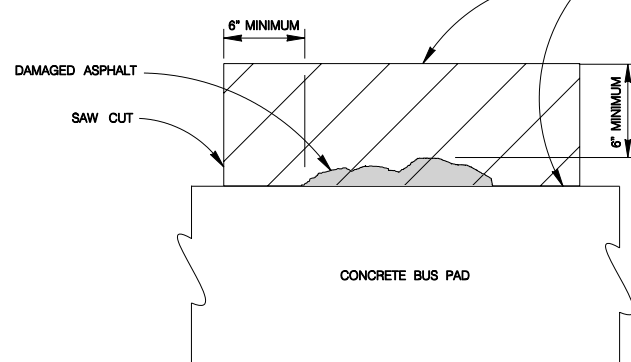
SAWCUT AS SOON AS THE CONCRETE IS STRONG ENOUGH TO SUPPORT THE SAWING EQUIPMENT AND TO PREVENT AGGREGATE RAVELING DURING THE SAWING OPERATION. ALL JOINTS SHOULD BE SAW CUT WITHIN 12 HOURS OF THE CONCRETE'S PLACEMENT. JOINTS SHALL BE FILLED WITH AN APPROVED ELASTIC TYPE MATERIAL AFTER SAW CUTTING.

PROOFROLL EXISTING SUBGRADE WITH BACKHOE OR SIMILAR EQUIPMENT TO LOCATE POTENTIAL SOFT REGIONS OF SUBGRADE. REPLACE SOFT AREAS WITH 12" OF SUITABLE MATERIAL.

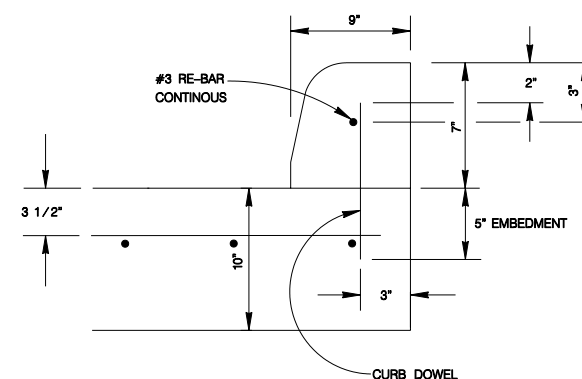


SAWED JOINT DETAIL
NTS

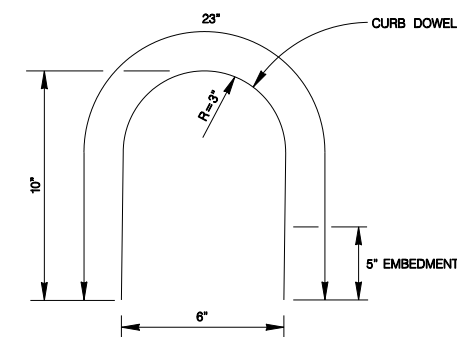
REMOVE AND REPLACE EXISTING ASPHALT PAVEMENT WITH 1 1/2" TYPE D HMAP. NO DIRECT PAYMENT WILL BE MADE FOR SUCH REPAIRS.



REPAIR OF DAMAGED ASPHALT
NTS



CONCRETE CURB OPTION
NEED CITY ENGINEER'S APPROVAL
NTS



CURB DOWEL
NO. 3 RE-BAR @ 30" C-C
NTS

NOTE:
THE CONTRACTOR SHALL CONSTRUCT AN EXPANSION JOINT MIDWAY IF THE "CONCRETE BUS STOP PAD" IS LONGER THAN 150 FEET. NO DIRECT PAYMENT SHALL BE MADE FOR CONSTRUCTION OF AN EXPANSION JOINT.

EXPANSION JOINT DETAIL

SCALE : 1" = 1'

GENERAL NOTES

1. ALL CONCRETE SHALL TEST 4,000 P.S.I. AT 28 DAYS.
2. BUS STOP CONCRETE PAD CONSTRUCTION SHALL BE PAID UNDER ITEM 209 AT THE UNIT PRICE BID, WHICH PRICE SHALL BE FULL COMPENSATION FOR ALL DEMOLITION, REMOVAL OF EXISTING CURB, EXCAVATION, HAULING, CRUSHED LIMESTONE, REINFORCING STEEL, CONCRETE, CONCRETE CURB, JOINTS, AND INCIDENTALS NECESSARY TO COMPLETE THE WORK.
3. BUS PAD AND CURB SHALL BE MONOLITHICALLY POURED. ALL EXISTING CURBING SHALL BE REMOVED AND REPLACED AS PER STANDARD DETAILS.
4. THE CONTRACTOR SHALL CONSTRUCT AN EXPANSION JOINT MIDWAY IF THE "CONCRETE BUS STOP PAD" IS LONGER THAN 150 FEET. NO DIRECT PAYMENT SHALL BE MADE FOR CONSTRUCTION OF AN EXPANSION JOINT.
5. ACTUAL BUS PAD LENGTH AND WIDTH TO BE FIELD DETERMINED BY CITY ENGINEER OR HIS DESIGNATED REPRESENTATIVE.
6. DO NOT DRIVE ON PAD UNTIL CONCRETE HAS REACHED A STRENGTH OF 2,800 P.S.I.
7. BREAK TEST CYLINDERS AS FOLLOWS:
2 AT 3 DAYS
2 AT 7 DAYS
2 AT 28 DAYS
8. CONCRETE BUS PAD LENGTH (OR AS SHOWN ON THE PLANS):
30 M.P.H. - 100'
35 M.P.H. - 160'
40 M.P.H. - 160'
45 M.P.H. - 200'

MAY 2009

CITY OF SAN ANTONIO
CAPITAL IMPROVEMENTS MANAGEMENT SERVICES DEPARTMENT

**CONCRETE
BUS STOP PAD**