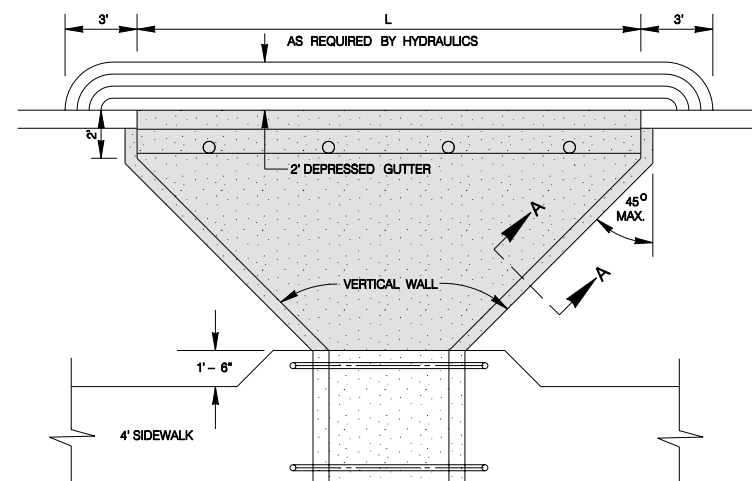
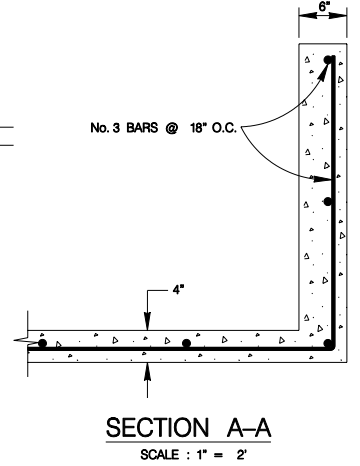


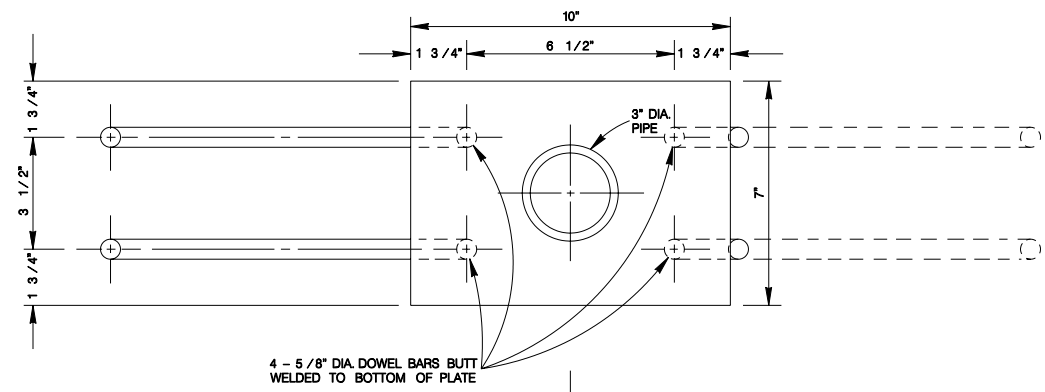
**PLAN VIEW "A"**  
SCALE : 1" = 8'



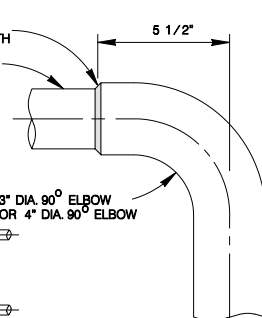
**PLAN VIEW "B"**  
SCALE : 1" = 8'



**SECTION A-A**  
SCALE : 1" = 2'

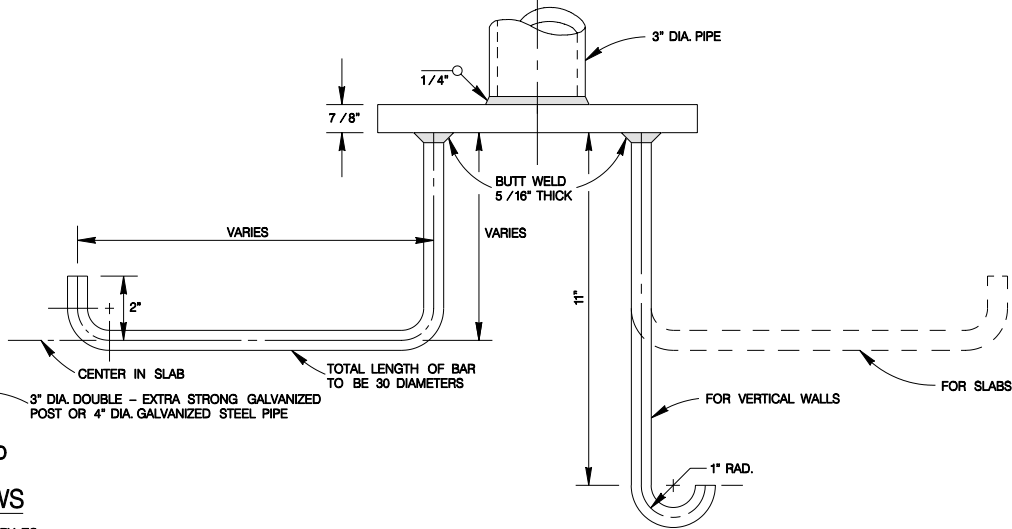


4 - 5/8" DIA DOWEL BARS BUTT WELDED TO BOTTOM OF PLATE

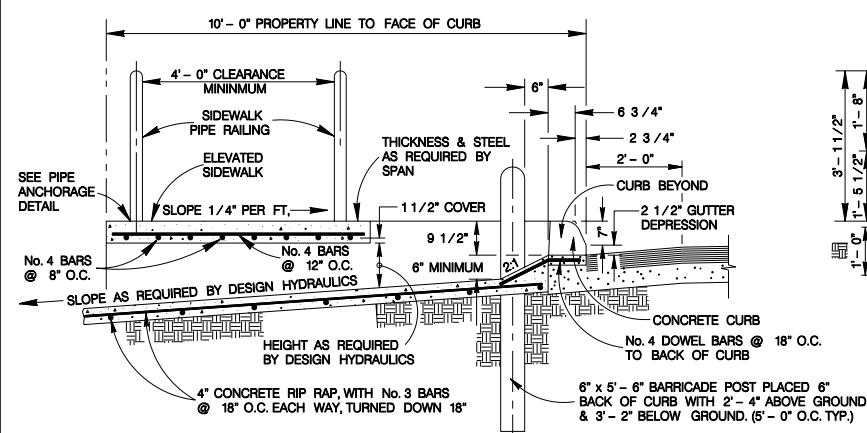


**DETAIL OF 90° WELDING ELBOWS**

\* A NEAT END SECTION, SATISFACTORY TO THE ENGINEER, FROM SUBMITTED SHOP DRAWINGS, MAY BE USED IN LIEU OF THE 90° WELDING ELBOW SHOWN.  
SCALE : 1" = 8'

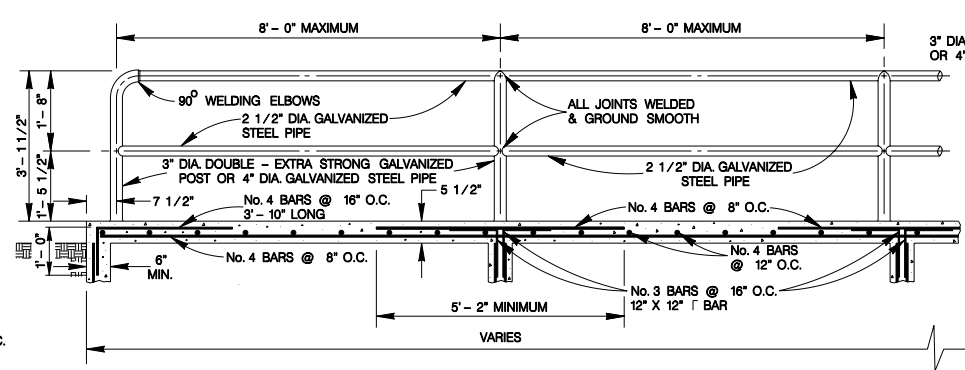


**PIPE ANCHORAGE DETAILS**  
SCALE : 1" = 6'

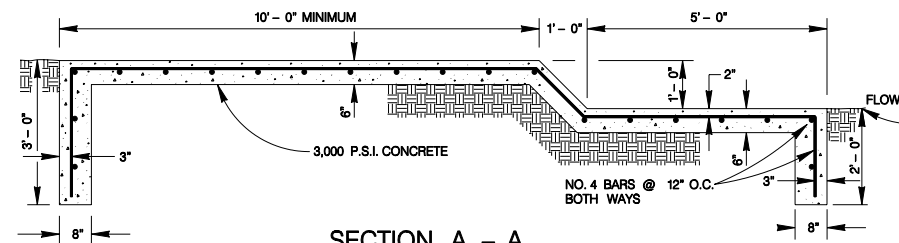


**ELEVATED SIDEWALK & DROP CURB DETAILS FOR DRAINAGE CHANNELS**  
SCALE : 1" = 4'

NOTE: 1. ALLOW FOR REFLECTOR BUTTONS ON BARRICADE POST. USE ONE 3/4" BUTTON PER POST.  
2. POST SHALL RECEIVE TWO COATS OF ALUMINUM PAINT.

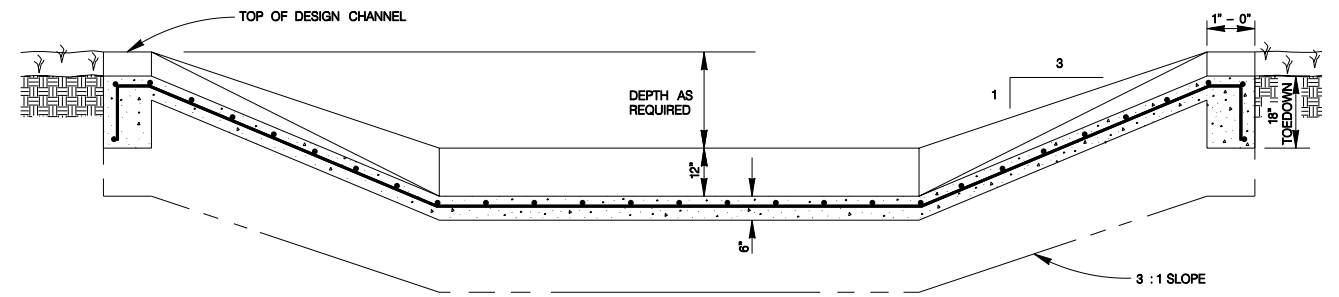


**TYPICAL SIDEWALK BRIDGE & SIDEWALK PIPE RAILING SECTION**  
SCALE : 1" = 4'



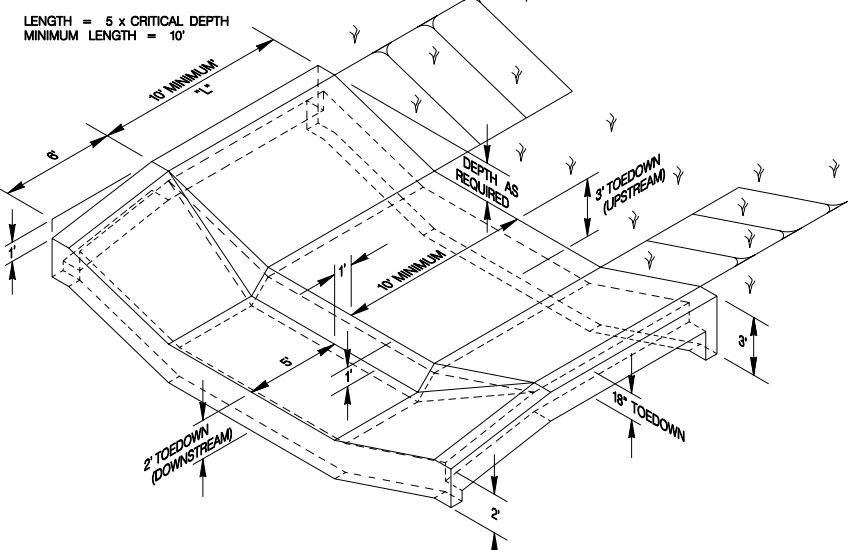
**SECTION A - A**  
SCALE : 1" = 4'

NOTE : RETARD TO BE CARRIED TO THE TOP OF DESIGN CHANNEL SECTION

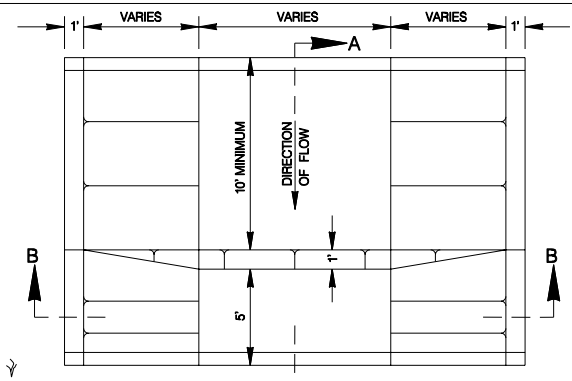


**SECTION B - B**  
SCALE : 1" = 4'

**RETARD DETAILS**



**ISOMETRIC VIEW**  
SCALE : 1" = 10'



**PLAN VIEW**  
SCALE : 1" = 10'

JANUARY 2005

CITY OF SAN ANTONIO  
CAPITAL IMPROVEMENTS MANAGEMENT SERVICES DEPARTMENT

**ELEVATED SIDEWALK & RETARD STANDARDS**

% SUBMITTAL	PROJECT NO.:	DATE:
DRWN. BY: V. VASQUEZ	DGN. BY:	CHKD. BY:
		SHEET NO.: OF