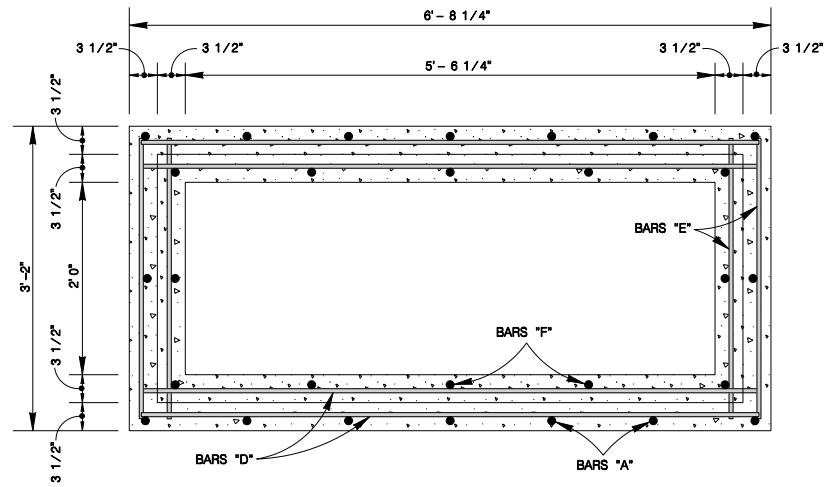
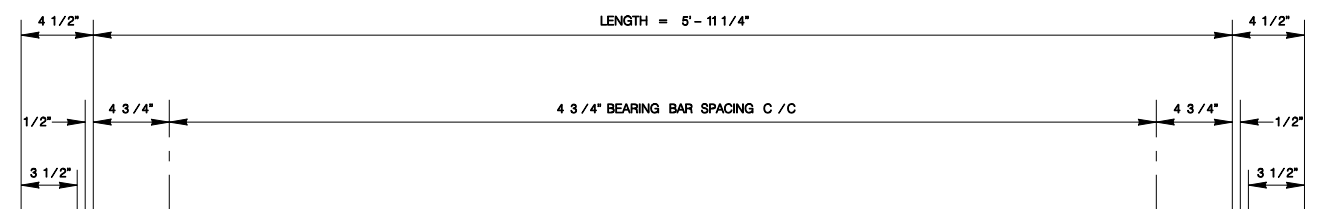


INLET REINFORCING STEEL SCHEDULE					
BARS	SIZE	No.	SPACING	LENGTH	WEIGHT
A	#4	7	12"	8' - 7"	40
B	#4	6	12"	2' - 11"	12
C	#4	7	12"	6' - 5 1/4"	30
D	#4	12	10"	6' - 5 1/4"	52
E	#4	12	10"	2' - 11"	23
F	#4	14	18"	2' - 6"	23
TOTAL WEIGHT (ITEM 301)					180 LBS
TOTAL CONCRETE (ITEM 300)					1.15 C.Y.

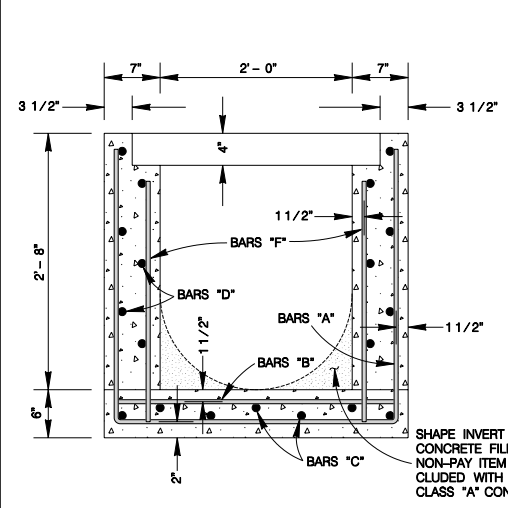


PLAN VIEW
SCALE : 1" = 2'

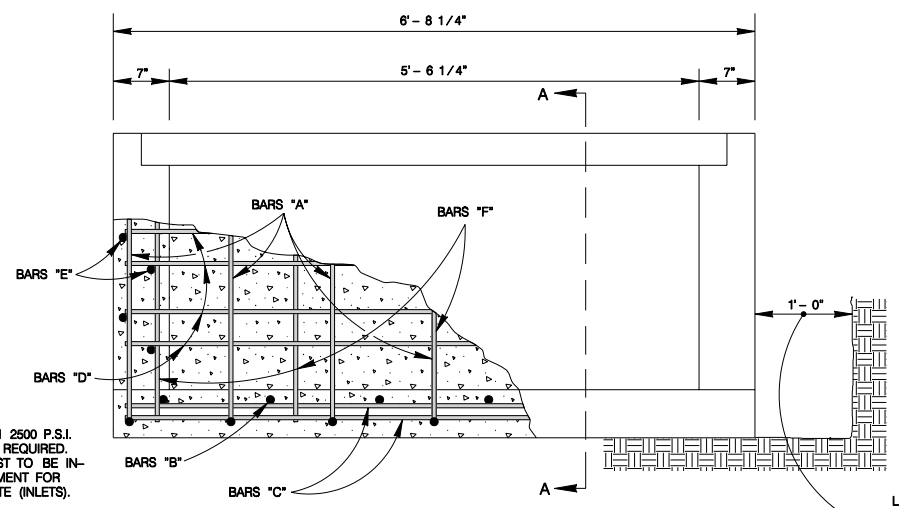
TRAFFIC GRATE SCHEDULE			
DESCRIPTION	No.	LENGTH	WEIGHT
SIDE RAIL	2	5' - 11 1/4"	121
BEARING RAIL	16	2' - 4"	190
STRINGER BAR	10	5' - 11 1/4"	76
TOTAL WEIGHT (ITEM 302)			387 LBS.



TRAFFIC GRATE PLAN VIEW
SCALE : 1" = 1'

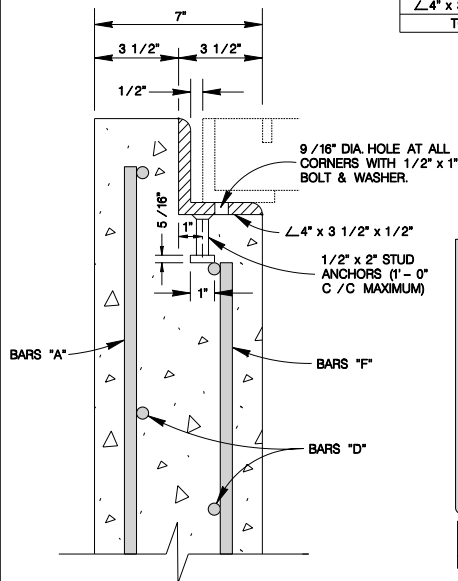


SECTION A-A
SCALE : 1" = 2'

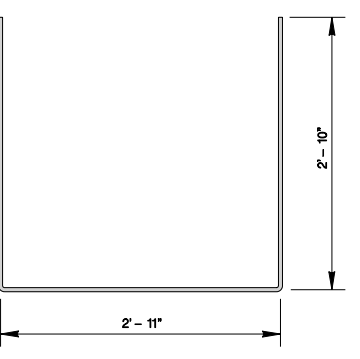


FRONT VIEW
SCALE : 1" = 2'

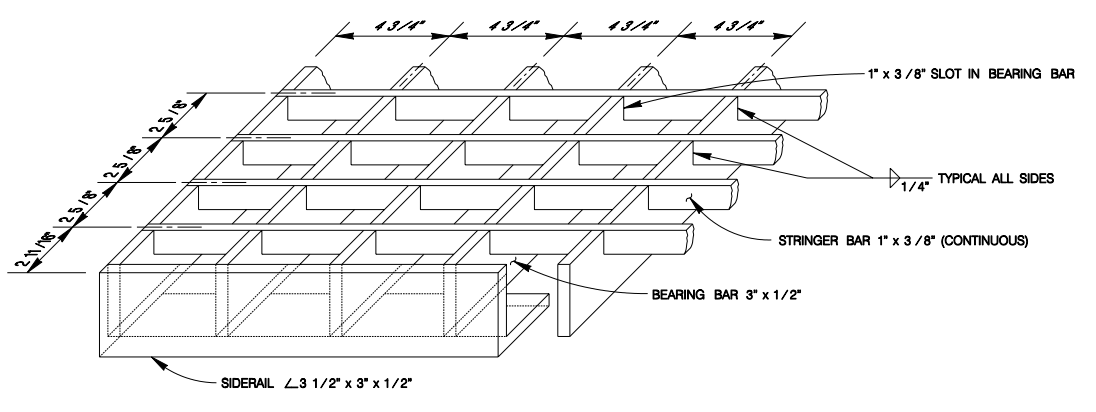
INLET FRAME SCHEDULE			
DESCRIPTION	No.	LENGTH	WEIGHT
∠4" x 3 1/2" x 1/2"	2	6' - 11 1/4"	145
∠4" x 3 1/2" x 1/2"	2	2' - 0"	48
TOTAL WEIGHT (ITEM 302)			193 LBS.



WALL
SCALE : 1" = 8"



SECTION A-A
SCALE : 1" = 2'



GRATE CORE
SCALE : 1" = 8"

LIMITS OF PAYMENT FOR EXCAVATION (TYPICAL - ALL SIDES). PAYMENT TO BE MADE UNDER ITEM 403 "INLETS & JUNCTION BOXES". VERTICAL LIMITS TO BE DETERMINED BY STREET EXCAVATION LIMITS.

GENERAL NOTES

1. ALL BARS INTERCEPTING REINFORCED CONCRETE PIPE SHALL BE FIELD CUT.
2. CONCRETE FOR STRUCTURES SHALL BE CLASS "A", 3000 P.S.I. IN 28 DAYS.
3. ALL DIMENSIONS RELATING TO REINFORCING STEEL ARE TO CENTER OF BARS.
4. ALL EXPOSED CORNER SHALL BE CHAMFERED TO 3/4".
5. CONSTRUCTION JOINT SHOWN AT FLOWLINE MAY BE RAISED A MAXIMUM OF 6" AT THE CONTRACTOR'S DISCRETION. ADJUST LENGTH OF VERTICAL STEEL AS REQUIRED.
6. ALL REINFORCING STEEL SHALL CONFORM TO THE REQUIREMENTS OF A.S.T.M. A-615, GRADE 60
7. INVERT OF DROP INLET SHALL BE SHAPED WITH CONCRETE FILL TO EFFECT DRAINAGE TO OUTLET PIPE.
8. WELDING & MATERIAL SHALL CONFORM TO THE TEXAS DEPT. OF TRANSPORTATION STANDARD SPECIFICATIONS FOR CONSTRUCTION OF HIGHWAYS, STREETS & BRIDGES ITEM 448 & 471.
9. ALL QUANTITIES IN FIGURES DO NOT EXCLUDE CONCRETE & STEEL INTERCEPTED BY REINFORCED CONCRETE PIPE.
10. PAYMENT FOR ALL EXCAVATION, BACKFILLING, CONCRETE, GRATE CORE & REINFORCING STEEL SHALL BE INCLUDED IN THE UNIT COST OF ITEM 403 "STORM SEWER JUNCTION BOXES AND INLETS".

JANUARY 2005

CITY OF SAN ANTONIO
CAPITAL IMPROVEMENTS MANAGEMENT SERVICES DEPARTMENT

GRATE INLET STANDARDS

% SUBMITTAL	PROJECT NO.:	DATE:
DRWN. BY: V. VASQUEZ	DSGN. BY:	CHKD. BY:
		SHEET NO.: OF