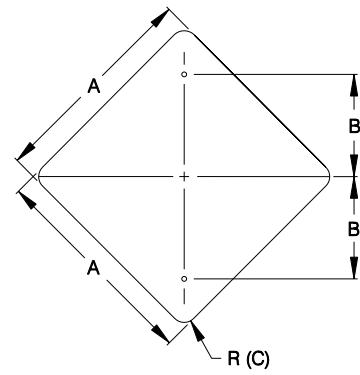


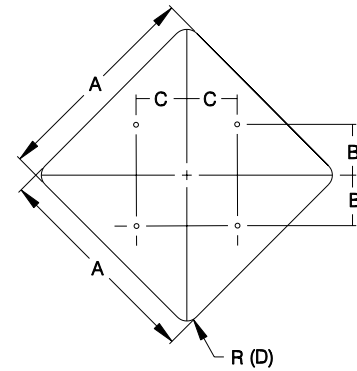
OCTAGONAL

A	B	C	T
24	3	18	0.080
30	3	24	0.080
36	3	30	0.100



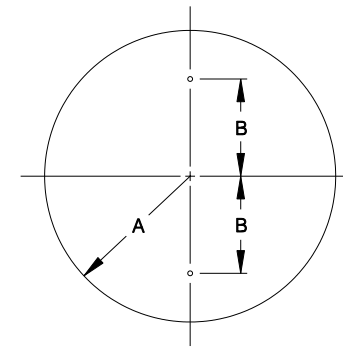
DIAMOND (A)

A	B	C	T
18	9	11/2	0.080
24	12	11/2	0.080
30	15	17/8	0.080
36	18	2 1/4	0.100



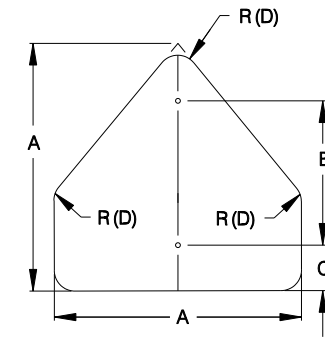
DIAMOND (B)

A	B	C	D	T
48	15	15	3	0.100



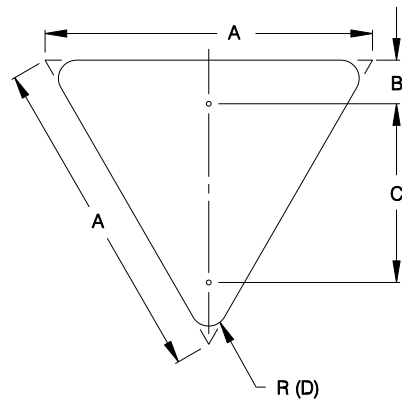
CIRCLE

A	B	T
18	15	0.100



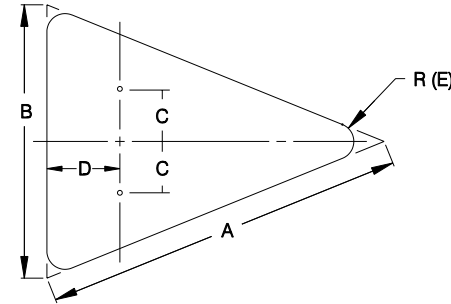
PENTAGON (SCHOOL)

A	B	C	D	T
36	24	3	2 1/4	0.100



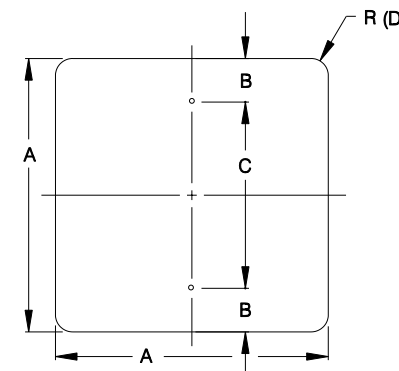
EQUILATERAL TRIANGLE

A	B	C	D	T
36	2	24	2	0.100



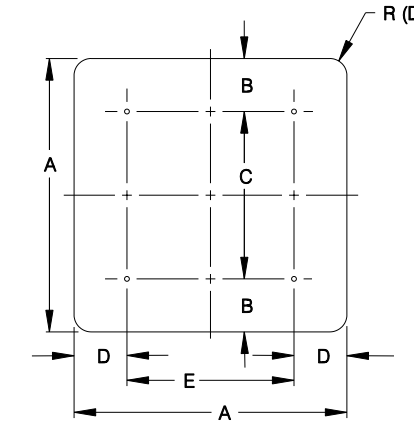
ISOSCELES TRIANGLE

A	B	C	D	E	T
40	30	7 1/2	12	17/8	0.100
48	36	9	15	2 1/4	0.100



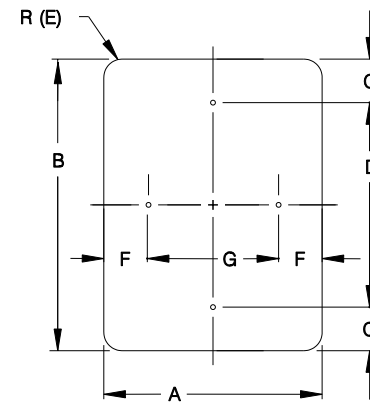
SQUARE (A)

A	B	C	D	T
18	11/2	15	11/2	0.080
24	3	18	11/2	0.080
30	3	24	17/8	0.080



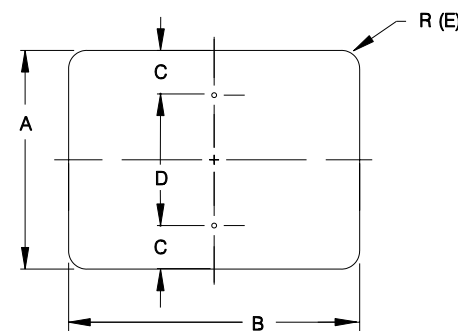
SQUARE (B)

A	B	C	D	E	F	T
48	6	36	9	30	3	0.100



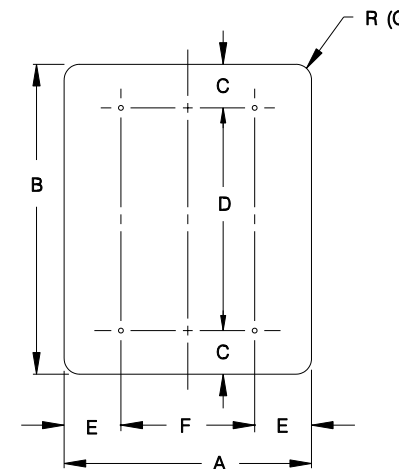
VERTICAL / HORIZONTAL RECTANGLE

A	B	C	D	E	F	G	T
12	18	11/2	15	11/2	11/2	9	0.080
12	36	3	30	11/2	11/2	9	0.080
18	24	11/2	21	11/2	11/2	15	0.080
24	30	3	24	11/2	3	18	0.080
24	36	3	30	11/2	3	18	0.080
24	48	6	36	17/8	3	18	0.080
30	36	3	30	17/8	3	24	0.080



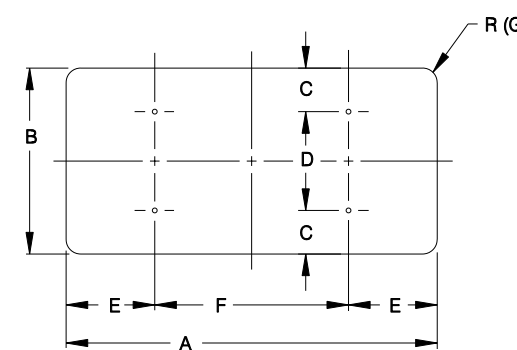
HORIZONTAL RECTANGLE

A	B	C	D	E	T
6	12	1	4	1/4	0.080
6	18	1	4	1/4	0.080
20	36	11/2	17	11/2	0.080



VERTICAL RECTANGLE

A	B	C	D	E	F	G	T
5	7 3/4	1/2	6 3/4	1/2	4	1/4	0.100
48	60	6	48	9	30	3	0.100



HORIZONTAL RECTANGLE

A	B	C	D	E	F	G	T
48	24	2	20	2	44	17/8	0.100
48	36	3	30	3	42	2 1/4	0.100
60	24	2	20	2	56	11/2	0.100
60	36	3	30	3	54	2 1/4	0.100
48	30	3	24	3	42	17/8	0.100
60	30	3	24	3	54	17/8	0.100

THE ORIGINAL OF THIS DRAWING WAS SIGNED AND SEALED BY EDWARD N. MERY, P.E., #58698 ON 02.06.06 AND IS ON FILE WITH THE TRAFFIC ENGINEERING DIVISION OF THE PUBLIC WORKS DEPARTMENT, CITY OF SAN ANTONIO.

FEBRUARY 2006

CITY OF SAN ANTONIO
DEPARTMENT OF PUBLIC WORKS

TRAFFIC SIGN STANDARDS
GROUND MOUNTED
SIGN SIZES
SHEET 3 OF 4