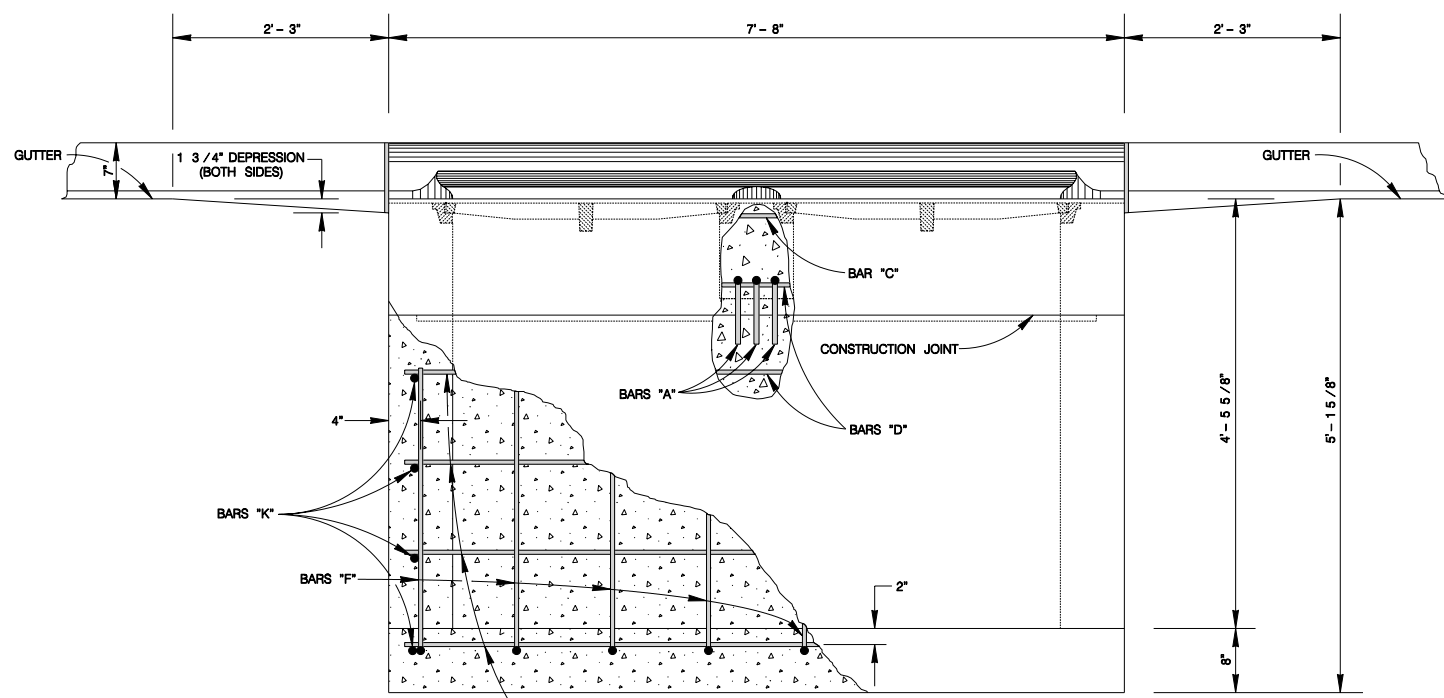
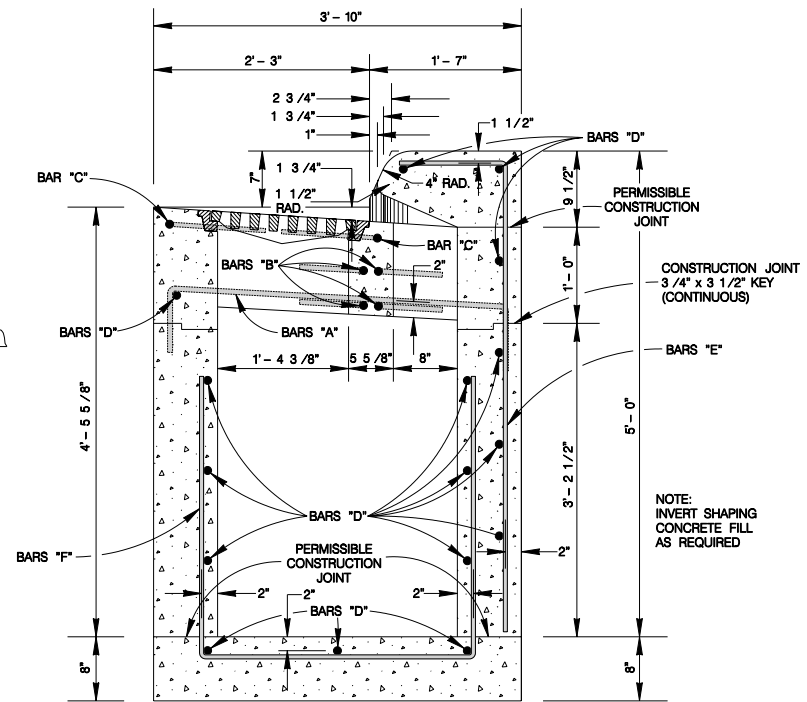
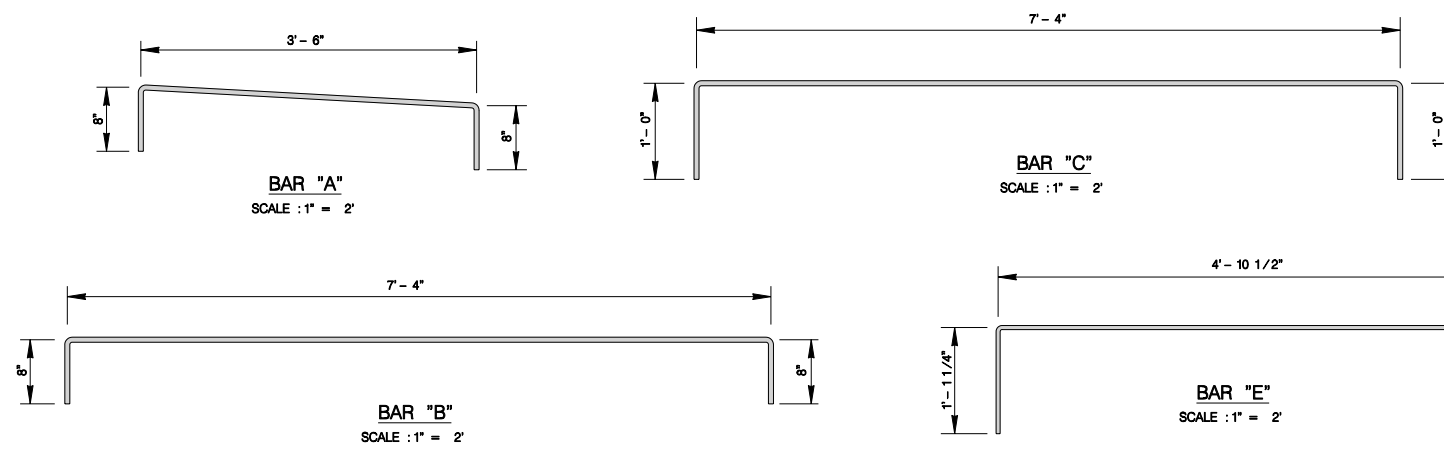


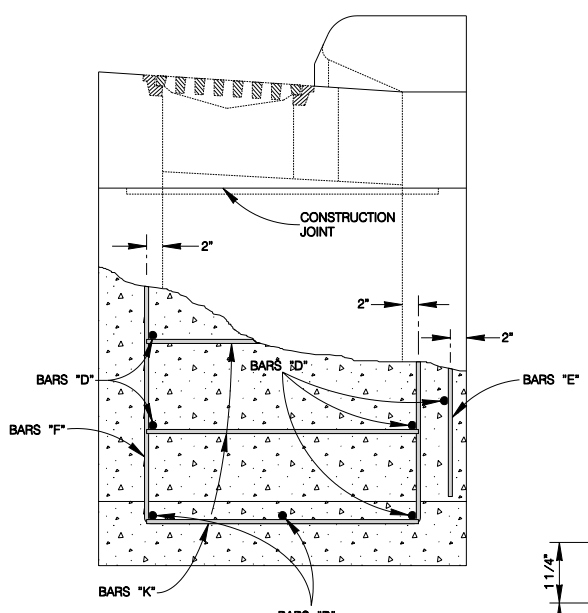
**PLAN VIEW**  
SCALE: 1" = 2'



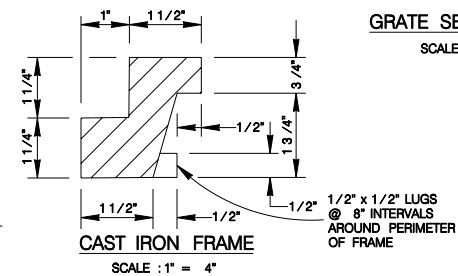
**FRONT VIEW**  
SCALE: 1" = 2'



**SECTION A-A**  
SCALE: 1" = 2'



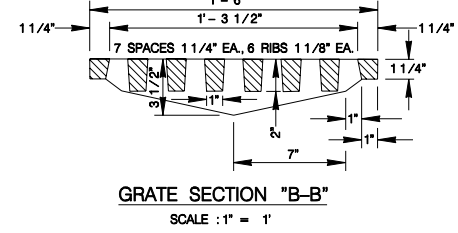
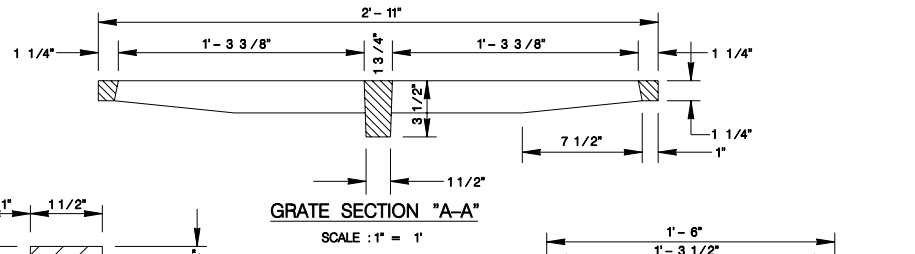
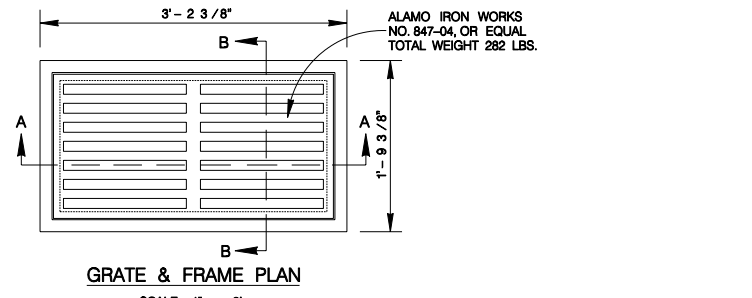
**SIDE VIEW**  
SCALE: 1" = 2'



- GENERAL NOTES**
1. ALL BARS INTERCEPTING REINFORCED CONCRETE PIPE SHALL BE FIELD CUT.
  2. CONCRETE FOR STRUCTURES SHALL BE CLASS "A", 3000 P.S.I. IN 28 DAYS.
  3. ALL DIMENSIONS RELATING TO REINFORCING STEEL ARE TO CENTER OF BARS.
  4. ALL EXPOSED CORNERS SHALL BE CHAMFERED 3/4".
  5. CONSTRUCTION JOINT SHOWN AT FLOWLINE MAY BE RAISED A MAXIMUM OF 6" AT THE OPTION OF THE CONTRACTOR. ADJUST LENGTH OF VERTICAL STEEL AS REQUIRED.
  6. ALL REINFORCING STEEL SHALL BE MEET A.S.T.M. SPECIFICATION A15-58T, NEW BILLET-STEEL, INTERMEDIATE GRADE, AND A.S.T.M. A305-56, MINIMUM REQUIREMENTS FOR DEFORMED STEEL BARS.
  7. PAYMENT FOR ALL EXCAVATION, BACKFILLING, CONCRETE AND REINFORCING STEEL SHALL BE INCLUDED IN THE UNIT COST OF ITEM 403 "STORM SEWER JUNCTION BOXES AND INLETS".

REINFORCING STEEL SCHEDULE						
SHAPE	BAR	NO.	SIZE	SPACE	LENGTH	WEIGHT
	A	3	5	2 5/8" C-C	4' - 10"	15
	B	4	5	AS SHOWN	8' - 8"	36
	C	2	4	AS SHOWN	9' - 4"	12
	D	16	4	AS SHOWN	7' - 4"	78
	E	11	4	9"	5' - 11 3/4"	44
	F	8	4	12"	8' - 8"	46
	K	8	4	12"	2' - 10"	15
<b>TOTAL =</b>						<b>246 LBS.</b>

ESTIMATED QUANTITIES		
ITEM	UNIT	NEAT QUANTITY
CLASS "A" CONCRETE	C.Y.	*3.38
REINFORCING STEEL	LBS.	*246
STORM SEWER CASTINGS	LBS.	564
*THESE FIGURES DO NOT EXCLUDE CONCRETE & STEEL INTERCEPTED BY REINFORCED CONCRETE PIPE.		



JANUARY 2005  
CITY OF SAN ANTONIO  
CAPITAL IMPROVEMENTS MANAGEMENT SERVICES DEPARTMENT

**TYPE "B" INLET STANDARDS**

% SUBMITTAL PROJECT NO.:	DATE:
DRWN. BY: V. VASQUEZ	SHEET NO. OF
DSGN. BY:	CHKD. BY: