

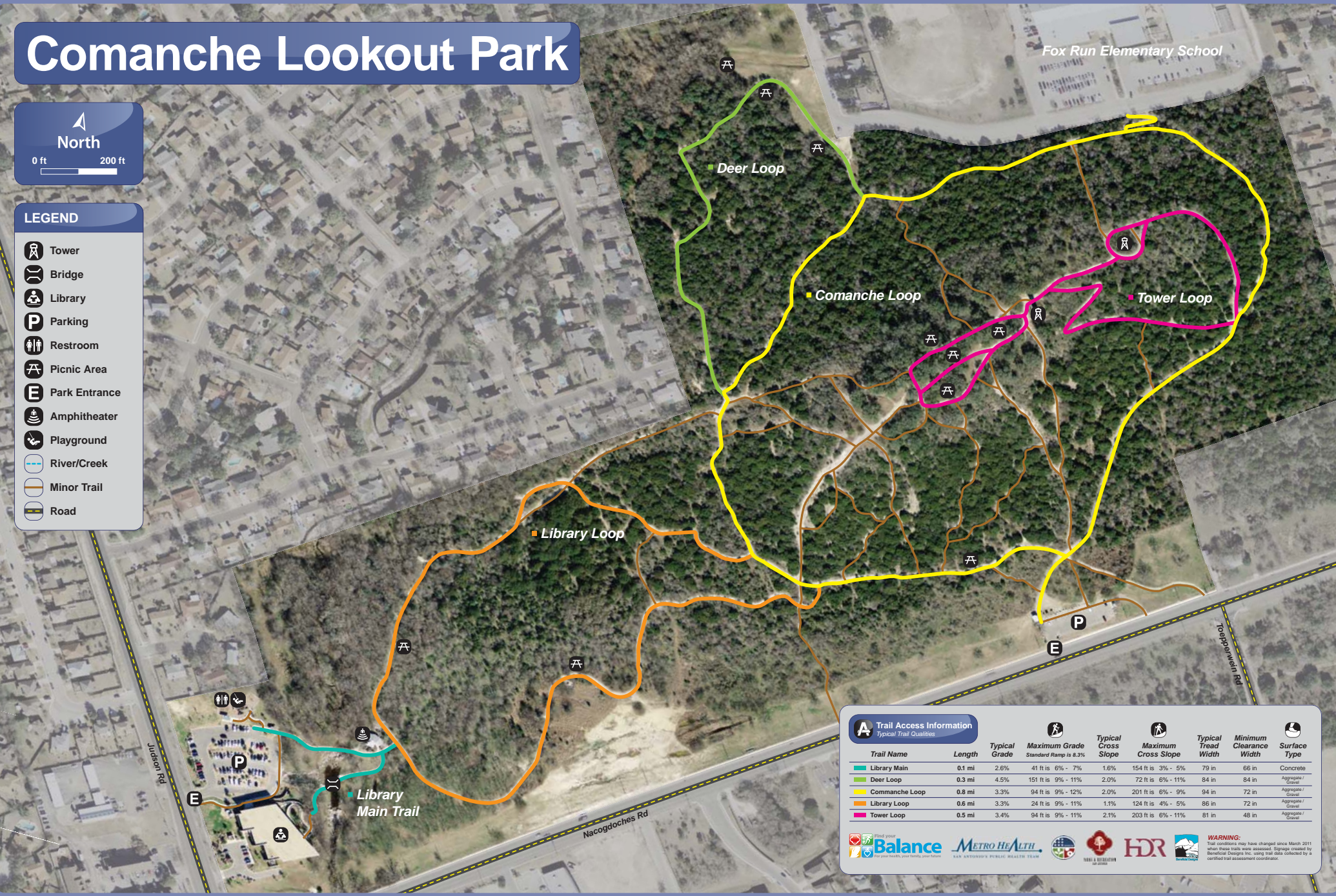
Comanche Lookout Park

North

0 ft 200 ft

LEGEND

- Tower
- Bridge
- Library
- Parking
- Restroom
- Picnic Area
- Park Entrance
- Amphitheater
- Playground
- River/Creek
- Minor Trail
- Road



A Trail Access Information
Typical Trail Qualities

Trail Name	Length	Typical Grade	Maximum Grade Standard Ramp is 8.3%	Typical Cross Slope	Maximum Cross Slope	Typical Tread Width	Minimum Clearance Width	Surface Type
Library Main	0.1 mi	2.6%	41 ft is 6% - 7%	1.6%	154 ft is 3% - 5%	79 in	66 in	Concrete
Deer Loop	0.3 mi	4.5%	151 ft is 9% - 11%	2.0%	72 ft is 6% - 11%	84 in	84 in	Aggregate / Gravel
Comanche Loop	0.8 mi	3.3%	94 ft is 9% - 12%	2.0%	201 ft is 6% - 9%	94 in	72 in	Aggregate / Gravel
Library Loop	0.6 mi	3.3%	24 ft is 9% - 11%	1.1%	124 ft is 4% - 5%	86 in	72 in	Aggregate / Gravel
Tower Loop	0.5 mi	3.4%	94 ft is 9% - 11%	2.1%	203 ft is 6% - 11%	81 in	48 in	Aggregate / Gravel

Find your **Balance** METRO HEALTH SAN ANTONIO'S PUBLIC HEALTH TEAM

HDR

WARNING: Trail conditions may have changed since March 2011 when these trails were assessed. Grapes created by Beneficial Designs Inc. using trail data collected by a certified trail assessment coordinator.