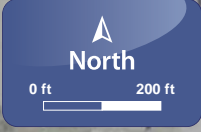
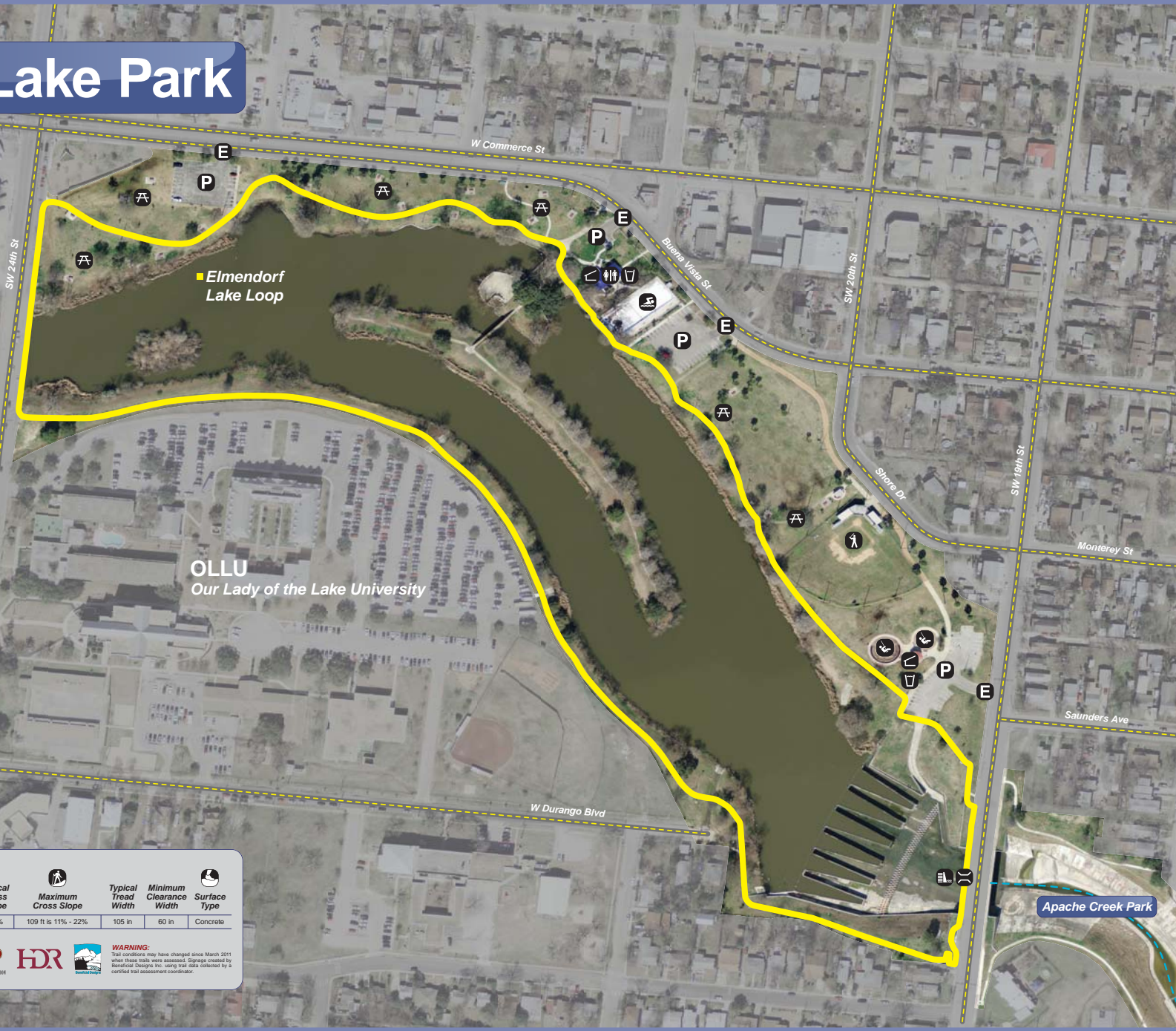


# Elmendorf Lake Park



- LEGEND**
- Dam
  - Pool
  - Bridge
  - Parking
  - Restroom
  - Picnic Area
  - Park Entrance
  - Drinking Water
  - Shelter/Pavilion
  - Baseball Field
  - Playground
  - River/Creek
  - Road



**Trail Access Information**  
Typical Trail Qualities

Trail Name	Length	Typical Grade	Maximum Grade Standard Ramp is 8.3%	Typical Cross Slope	Maximum Cross Slope	Typical Tread Width	Minimum Clearance Width	Surface Type
Elmendorf Lake Loop	1.2 mi	1.6%	32 ft is 9% - 13%	3.0%	109 ft is 11% - 22%	105 in	60 in	Concrete

**Balance** **METRO HEALTH** **PARKS & RECREATION** **HDR**

**WARNING:** Trail conditions may have changed since March 2011 when these trails were assessed. Signage created by Beneficial Designs Inc. using trail data collected by a certified trail assessment coordinator.

Apache Creek Park