

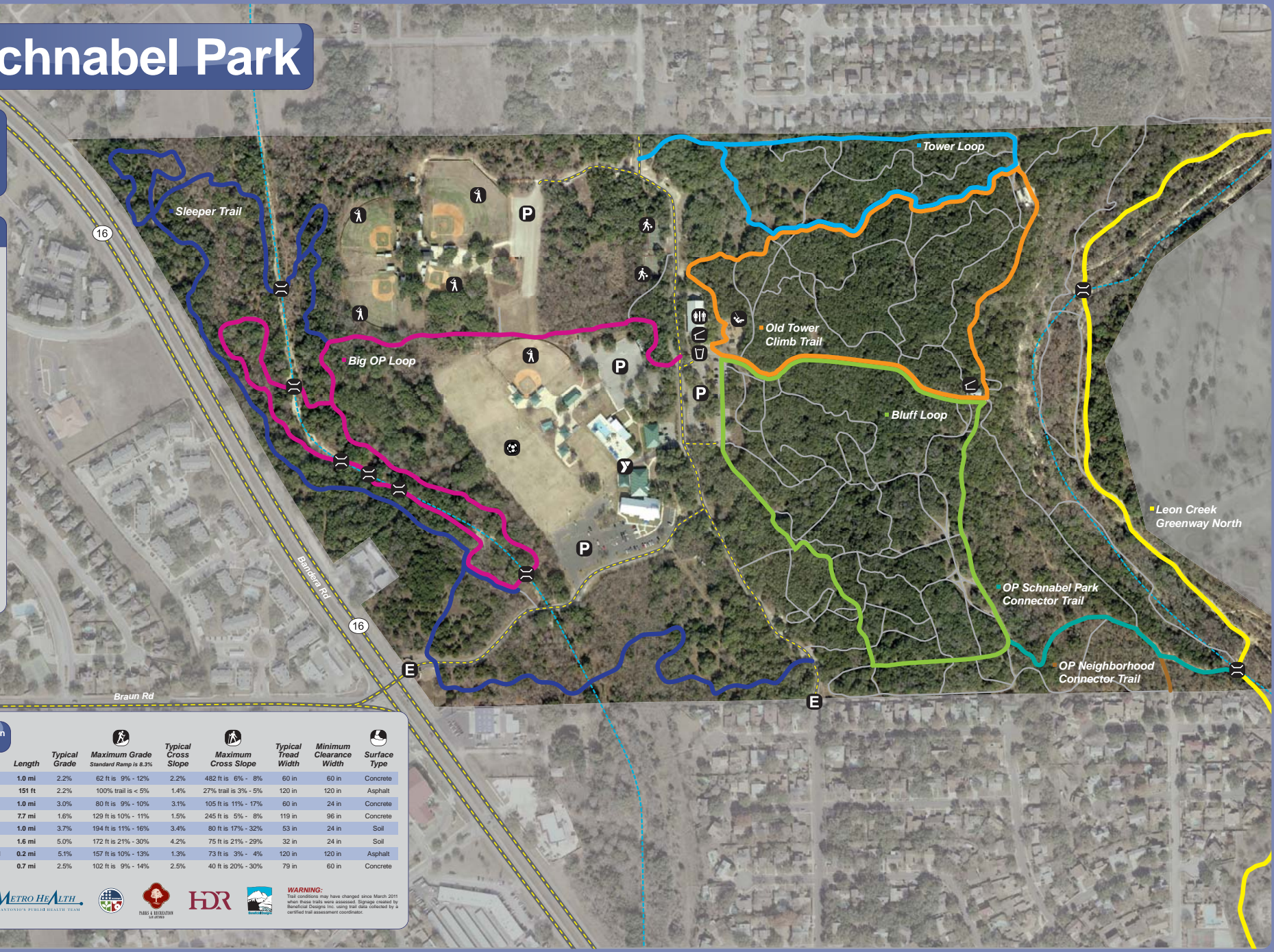
OP Schnabel Park



0 ft 300 ft

LEGEND

- YMCA
- Bridge
- Parking
- Restroom
- Playground
- Park Entrance
- Drinking Water
- Shelter/Pavilion
- Basketball Courts
- Baseball Fields
- Soccer Fields
- Creek
- Road
- Minor Trail



A Trail Access Information

Trail Name	Length	Typical Grade	Maximum Grade Standard Ramp is 8.3%	Typical Cross Slope	Maximum Cross Slope	Typical Tread Width	Minimum Clearance Width	Surface Type
Big OP Loop	1.0 mi	2.2%	62 ft is 9% - 12%	2.2%	482 ft is 6% - 8%	60 in	60 in	Concrete
OP Neighborhood Connector Trail	151 ft	2.2%	100% trail is < 5%	1.4%	27% trail is 3% - 5%	120 in	120 in	Asphalt
Old Tower Climb Trail	1.0 mi	3.0%	80 ft is 9% - 10%	3.1%	105 ft is 11% - 17%	60 in	24 in	Concrete
Leon Creek Greenway North	7.7 mi	1.6%	129 ft is 10% - 11%	1.5%	245 ft is 5% - 8%	119 in	96 in	Concrete
Tower Loop	1.0 mi	3.7%	194 ft is 11% - 16%	3.4%	80 ft is 17% - 32%	53 in	24 in	Soil
Sleeper Trail	1.6 mi	5.0%	172 ft is 21% - 30%	4.2%	75 ft is 21% - 29%	32 in	24 in	Soil
OP Schnabel Park Connector Trail	0.2 mi	5.1%	157 ft is 10% - 13%	1.3%	73 ft is 3% - 4%	120 in	120 in	Asphalt
Bluff Loop	0.7 mi	2.5%	102 ft is 9% - 14%	2.5%	40 ft is 20% - 30%	79 in	60 in	Concrete