

SCORE GRADING INFORMATION

PREVENTABLE COLLISIONS

Points are awarded for reducing the # of preventable vehicle collisions at or below department goal.

PREVENTABLE INJURIES

Points are awarded for reducing the # of Workers' Comp preventable injuries at or below department goal.

=< Goal = 30 Points

Up to 10% over Goal = 20 Points
11% - 25% over Goal = 15 Points
26% - 50% over Goal = 10 Points
No change from PY = 5 Points
> 50% over Goal = 0 Points

=< Goal = 30 Points

Up to 10% over Goal = 20 Points
11% - 25% over Goal = 15 Points
26% - 50% over Goal = 10 Points
No change from PY = 5 Points
> 50% over Goal = 0 Points

PREVENTABLE COSTS

Points are awarded for reducing current FY Workers' Comp cost at or below department goal.
Goal = Preventable Goal x 3 Year Average Claims Cost.

=< Goal = 20 Points

Up to 10% over Goal = 15 Points
11% - 25% over Goal = 10 Points
26% - 50% over Goal = 5 Points
> 50% over Goal = 0 Points

FACILITY INSPECTION CORRECTIONS

Points are awarded for making corrections or taking the proper steps within 14 days of notification.

Number of inspection findings corrected / Number of inspection findings = % of findings corrected.

0 Findings = 10 Points

> 95% = 10 Points
> 75% = 9 Points
> 50% = 8 Points
> 45% = 5 Points
Below 45% = 0 Points

SAFETY TRAINING

Points are awarded based on number of FTE's completing a minimum of one (1) safety related training session.

Number of FTE's trained / Number of Department FTE's = % of FTE's trained.

>= 90% = 10 Points

80-89% = 9 Points
60-69% = 7 Points
40-49% = 5 Points
20-29% = 3 Points
1-9% = 1 Point

70-79% = 8 Points
50-59% = 6 Points
30-39% = 4 Points
10-19% = 2 points
0 = 0 Point

PATHWAY TO FY 2019

Fiscal Year	2017 Actual	2018 Actual	2019 Goal
Preventable Vehicle Collision	508	456	0
Preventable Workers' Comp Injuries	309	154	0
Preventable Workers' Comp Cost	\$1.25M	\$447K	\$0

Office of Risk Management Awards & Recognition

Concerned Organization Award

World Safety Organization

For excellence in enhancing safety awareness and actively contributing to the protection of people, property, and resources through innovative programs.

National Risk Management Outstanding Achievement Award

National Public Risk Management Association (PRIMA)

In recognition for "An Innovative Approach to Risk Management"

Risk Management Program Achievement Award

Texas Public Risk Management Association (PRIMA)

In recognition of a successful risk management program which promotes the value of risk management to public entities

Our Driving Concern Texas Employer Traffic Safety Award

The National Safety Council & Texas Department of Transportation

In recognition of the City's outstanding commitment to keeping its employees safe on Texas roads

Defensive Driving Remarkable Results Award

National Safety Council (NSC)

In recognition of the City's leadership in developing safer drivers through NSC's defensive driving program

Ben Gorzell, CPA
Chief Financial Officer

Debra Ojo, MPA
Director, Office of Risk Management
207-2045

Jodie Brown, CSP
Safety Administrator, Office of Risk Management
207-8424



CORE Values
Teamwork • Integrity • Innovation • Professionalism

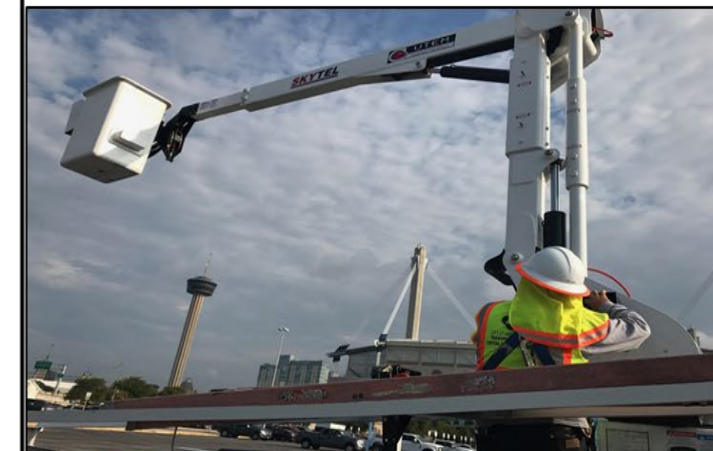
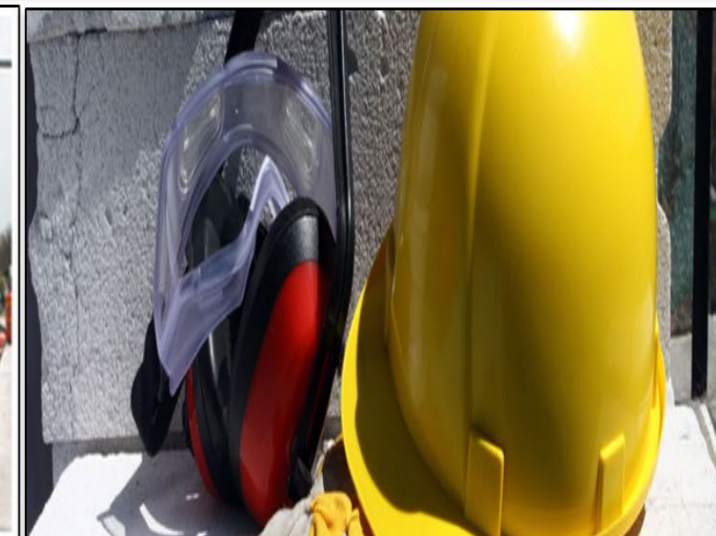
Office of Risk Management

CITY OF SAN ANTONIO

SAFETY BALANCED SCORECARD

FY 2019

Quarter 3



OFFICE OF RISK MANAGEMENT
Frost Bank Tower
100 W. Houston Street, Suite 1800
San Antonio, TX 78205

City of San Antonio
FY 2019 - Safety Balanced Scorecard
(October 2018 - September 2019)

Department	Preventable Vehicle Collisions (30 Points)					Workers' Comp Preventable Injuries (30 Points)					Workers' Comp Preventable Costs (20 Points)				Facility Inspection Corrections (10 Points)					Safety Training (10 Points)		FY2019 Total Points	EPE Rating
	FY2016 Bench-mark	FY2018 Prev Collisions	FY2019 Dept Goal	Preventable Collisions	Collision Points	FY2016 Bench-mark	FY2018 Prev Injuries	FY2019 Prev Dept Goal	Preventable Injuries	Injury Points	3 Year Average Claim Cost	FY2019 Dept Goal	Cost of Preventable Claims (YTD)	Claim Cost Points	FY2019 Inspections Conducted	Total Findings	Findings Corrected	% Corrected	Inspection Points	# FTE's Trained	Training Points		
				YTD					YTD														
Animal Care Services	7	4	0	6	0	14	4	0	5	5	1,469	0	8,366	0	9	40	40	100%	10	147	10	25	1
Arts & Culture	0	0	0	0	30	0	0	0	0	30	0	0	0	20	2	3	3	100%	10	21	10	100	4
Aviation	7	18	0	12	5	19	8	0	2	5	3,452	0	5,655	0	9	13	13	100%	10	473	10	30	1
Building & Equipment Services	4	3	0	1	5	18	11	0	2	5	4,173	0	731	0	23	15	15	100%	10	182	10	30	1
Center City Development & Operations	2	3	0	1	5	4	3	0	1	5	4,946	0	2,285	0	7	16	16	100%	10	94	8	28	1
City Auditor	0	0	0	0	30	0	0	0	0	30	0	0	0	20	1	0	0	100%	10	24	10	100	4
City Clerk	0	0	0	0	30	0	0	0	0	30	0	0	0	20	2	1	1	100%	10	33	10	100	4
Convention & Sports Facilities	0	0	0	1	0	30	1	0	10	0	4,675	0	21,168	0	31	33	32	97%	10	435	10	20	1
Customer Service and 311	0	0	0	0	30	0	0	0	0	30	0	0	0	20	1	2	2	100%	10	37	10	100	4
Department of Human Services	3	3	0	0	30	12	9	0	3	5	3,535	0	1,190	0	5	10	8	80%	9	345	10	54	1
Development Services	12	20	0	8	5	4	3	0	1	0	4,147	0	614	0	2	3	2	67%	8	417	10	23	1
Economic Development	0	0	0	0	30	0	0	0	0	30	0	0	0	20	1	1	1	100%	10	37	10	100	4
Finance	0	0	0	0	30	2	0	0	1	0	2,471	0	631	0	3	10	5	67%	8	150	10	48	1
Government & Public Affairs	0	0	0	0	30	3	0	0	1	0	1,624	0	518	0	1	3	3	100%	10	32	10	50	1
Human Resources	0	0	0	0	30	1	0	0	0	30	2,630	0	0	20	3	1	1	100%	10	108	5	95	4
ITSD	0	0	0	1	0	3	0	0	0	30	2,384	0	0	20	3	13	13	100%	10	313	10	70	2
Library	0	1	0	0	30	18	3	0	2	5	2,552	0	30,561	0	20	91	91	100%	10	511	10	55	1
Metro Health	4	6	0	0	30	23	5	0	4	5	2,129	0	6,195	0	12	25	25	100%	10	407	10	55	1
Municipal Court	0	0	0	0	30	10	2	0	0	30	1,604	0	0	20	4	23	17	83%	9	137	9	98	4
Neighborhood and Housing Services	0	0	0	0	30	0	0	0	0	30	0	0	0	20	2	11	11	100%	10	78	10	100	4
Office of City Attorney	0	0	0	0	30	1	1	0	0	30	401	0	0	20	2	2	2	100%	10	83	10	100	4
Office of City Council & Mayor's Office	0	0	0	0	30	0	0	0	0	30	491	0	0	20	2	10	1	10%	0	5	10	90	4
Office of City Manager	0	0	0	0	30	0	0	0	0	30	521	0	0	20	1	3	3	100%	10	11	6	96	4
Office of Equity	0	0	0	0	30	0	0	0	0	30	0	0	0	20	1	1	1	100%	10	5	10	100	4
Office of Historic Preservation	0	0	0	0	30	0	0	0	0	30	0	0	0	20	1	3	3	100%	10	19	10	100	4
Office of Innovation	0	0	0	0	30	0	0	0	0	30	0	0	0	20	1	1	1	100%	10	4	9	99	4
Office of Management and Budget	0	0	0	0	30	0	0	0	0	30	1,086	0	0	20	0	0	0	100%	10	20	10	100	4
Office of Risk Management	0	0	0	0	30	0	0	0	0	30	324	0	0	20	1	0	0	100%	10	33	10	100	4
Office of Sustainability	0	0	0	0	30	0	0	0	0	30	0	0	0	20	2	5	5	100%	10	7	8	98	4
Parks and Recreation	25	28	0	19	5	57	29	0	5	5	4,050	0	8,641	0	26	62	57	92%	9	717	10	29	1
Planning	0	0	0	0	30	0	0	0	0	30	457	0	0	20	1	0	0	100%	10	22	10	100	4
Pre K 4 SA	0	0	0	0	30	22	7	0	15	0	2,179	0	15,303	0	4	6	6	100%	10	350	10	50	1
Solid Waste Management	127	76	0	50	5	22	5	0	8	0	4,947	0	9,404	0	54	67	67	100%	10	725	10	25	1
TCl	60	41	0	28	5	28	15	0	12	5	3,882	0	16,571	0	54	29	25	86%	9	827	10	29	1
Tricentennial	0	0	0	0	30	0	0	0	0	30	0	0	0	20	0	0	0	100%	10	0	0	90	4
World Heritage	0	0	0	0	30	0	0	0	0	30	0	0	0	20	0	0	0	100%	10	6	10	100	4
Civilian	251	203	0	127	23	291	106	0	72	19		0	127,832	12	291	503	470	93%	9	6,815	9	72	2
Fire	64	66	0	44	5	183	28	0	13	5	6,263	0	62,491	0	29	121	112	93%	9	1,851	10	29	1
Police	146	187	0	127	5	167	20	0	23	5	4,423	0	125,752	0	6	9	9	100%	10	3,031	10	30	1
Uniform	210	253	0	171	5	350	48	0	36	5		0	188,243	0	35	130	121	93%	9	4,882	10	30	1
FY2019 City Average	461	456	0	298	21	641	154	0	108	17		0	316,075	11	326	633	591	93%	9	11,697	10	68	1

8/15/2019

Total points equate to a final EPE Rating			
Outstanding 90-100 = 4	Exceeds Expectations 80-89 = 3	Achieves Expectations 70-79 = 2	Improvement Needed 0-69 = 1