

**Bexar County Influenza Surveillance Report, 2019-2020 Season; 2019 MMWR Week 44**  
(October 27, 2019 – November 2, 2019)

**Summary**

Influenza activity continues to be sporadic in San Antonio and Bexar County. Compared to the previous week, the percentage of patient visits due to influenza-like illness (ILI) increased and there was an increase in reports of specimens testing positive for influenza by the public health and hospital laboratories. There were no influenza-associated pediatric deaths reported this week nor any influenza-associated outbreaks.

**Table 1: Summary of Recent Bexar County Influenza and Influenza-like Illness (ILI) Activity**

	Percent Change from Previous Week	Current Week 44	Previous Week 43	Data Cumulative since September 29, 2019 (Week 40)
Percentage of specimens positive for influenza by hospitals and public health laboratory	↑3.8	2.7	2.6	1.8
Percentage of visits due to ILI <sup>+</sup>	↑52.0	3.8	2.5	2.5
Number of variant/novel influenza infections	No change	0	0	0
Number of pediatric influenza deaths	No change	0	0	0
Influenza activity code <sup>++</sup>	No Change	Localized	Localized	N/A

Note: Data included in this table have been updated since last week's flu report with any new reports received.

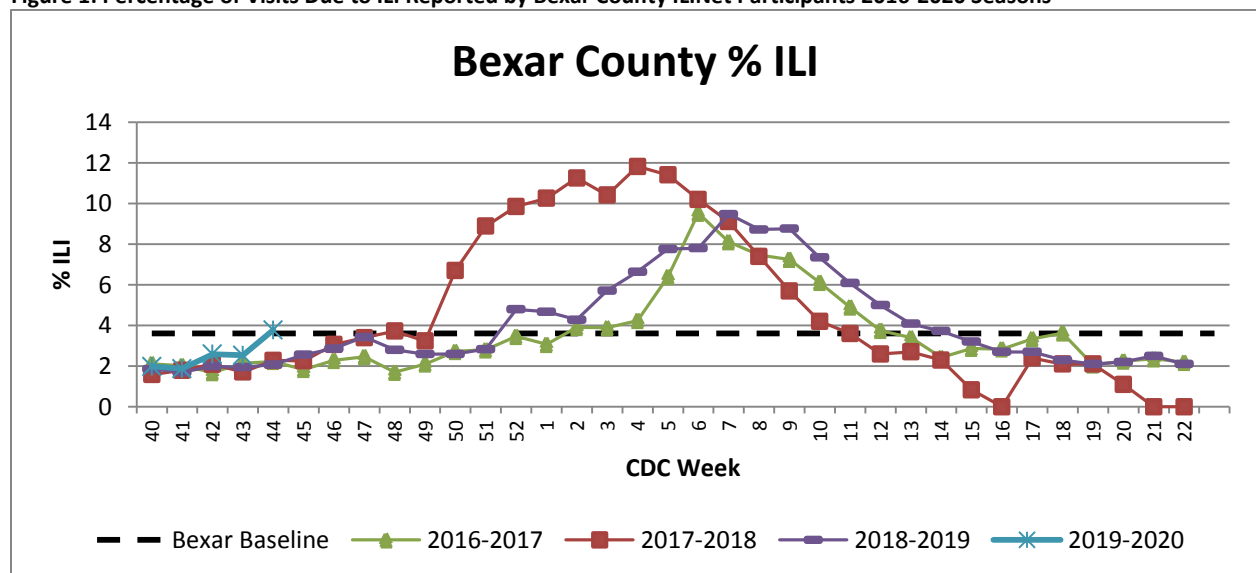
<sup>+</sup>Based on ILINet data

<sup>++</sup>Based on ESSENCE data

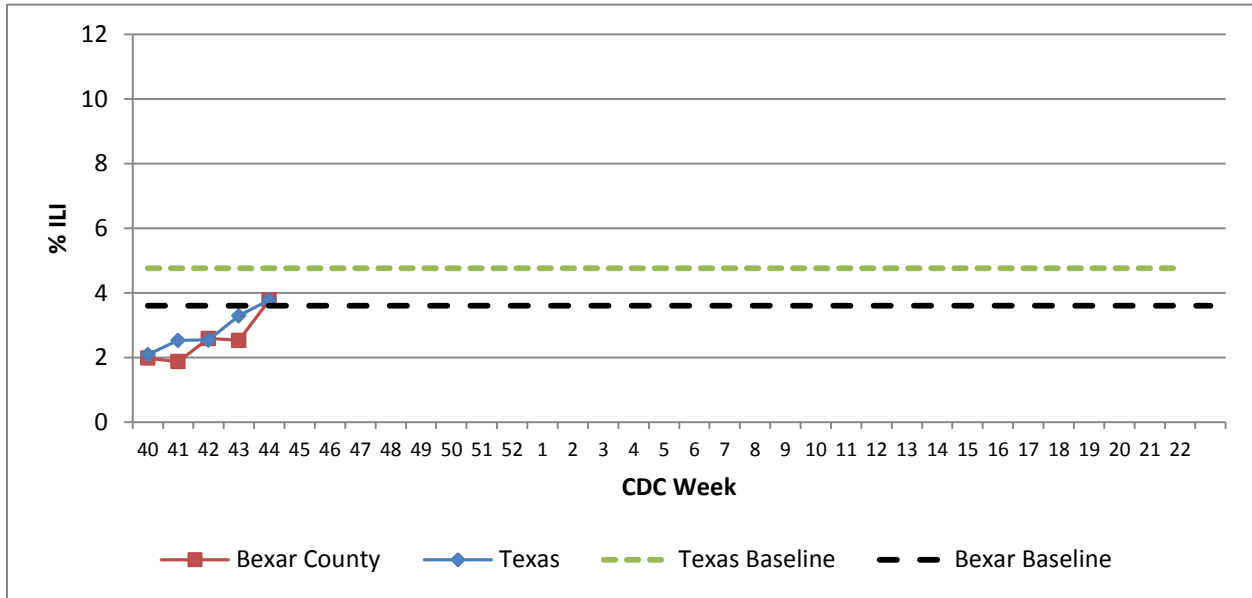
**U.S. Outpatient Influenza-like Illness Surveillance Network (ILINet)**

Information on patient visits to health care providers for influenza-like illness (ILI) is collected throughout Bexar County. Health care providers voluntarily report this information to ILINet.

**Figure 1: Percentage of Visits Due to ILI Reported by Bexar County ILINet Participants 2016-2020 Seasons**



**Figure 2: Percentage of Visits Due to ILI Reported by ILINet Participants, Texas and Bexar County, 2019-2020**



## Laboratory Results

### Hospital and Public Health Laboratory Testing

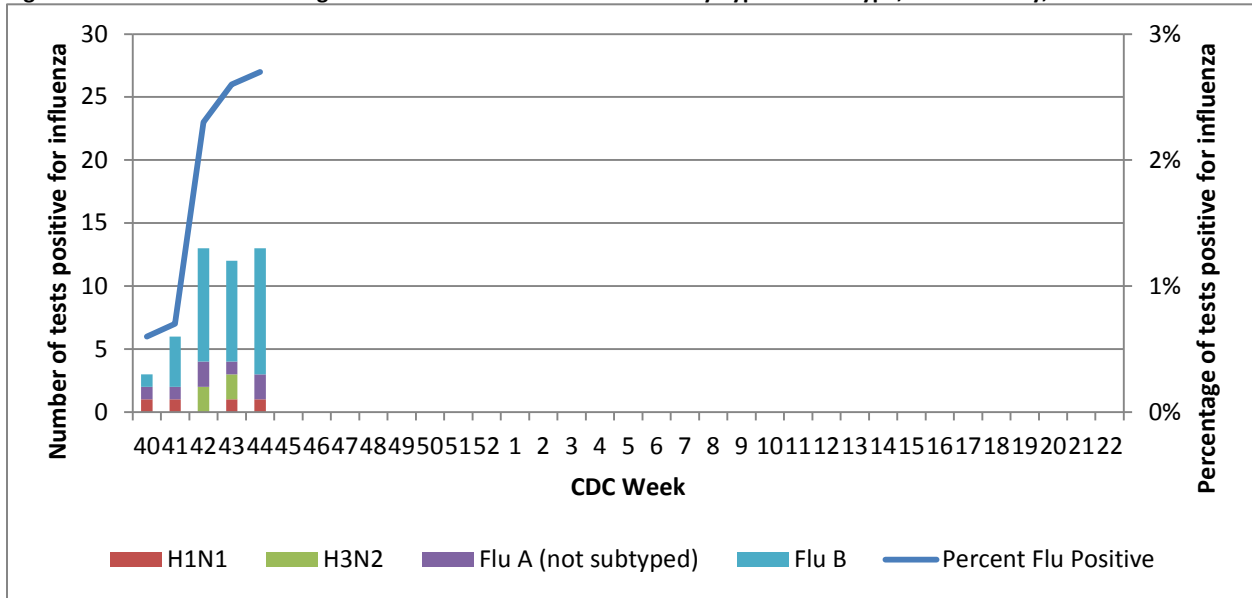
Hospital laboratories voluntarily report influenza tests (antigen, culture, and PCR) to the National Respiratory and Enteric Virus Surveillance System (NREVSS). Providers throughout Bexar County also submit specimens for influenza testing (PCR) to the San Antonio Metropolitan Health District’s (Metro Health) public health laboratory. The results reported by Texas NREVSS participants and Metro Health for the current week are summarized in the table below.

**Table 2: Influenza testing performed in Bexar County for the Current and Previous Week**

	Current Week 44	Previous Week 43	Cumulative since September 29, 2019 (Week 40)
<b>Number of specimens tested</b>	477	418	2383
<b>Number of positive specimens (n, %)</b>	13 (2.7%)	11 (2.6%)	43 (1.8%)
<b>Positive specimens by type/subtype (n, %)</b>			
<b>Influenza Type A</b>	3 (23.1%)	4 (36.4%)	13 (30.2%)
<b>Subtyping performed</b>	1 (33.3%)	3 (75.0%)	7 (53.8%)
<b>H1N1</b>	1 (100%)	1 (33.3%)	3 (42.9%)
<b>H3N2</b>	0 (0.0%)	2 (66.7%)	4 (57.1%)
<b>Subtyping not performed</b>	2 (66.7%)	1 (25.0%)	6 (46.2%)
<b>Influenza Type B</b>	10 (76.9%)	8 (72.7%)	31 (72.1%)

Note: Data included in this table is voluntarily submitted weekly via NREVSS and Metro Health laboratory and reporting may vary from week to week.

**Figure 3: Number and Percentage of PCR Tests Positive for Influenza by Type and Subtype, Bexar County, 2019-2020**



**Sentinel Provider Laboratory Testing**

Providers throughout Bexar County also submit influenza test results (antigen, PCR) to Metro Health on a voluntary basis. These sites are recruited to send this information on a weekly basis. The results from the participating providers are summarized in the table below (Table 3).

**Table 3: Influenza testing performed by Bexar County Sentinel Providers**

	Current Week 44	Previous Week 43	Cumulative since September 29, 2019 (Week 40)
<b>Number of providers reporting flu tests</b>	20	20	-
<b>Number of positive specimens</b>	56	41	146
<b>Positive specimens by type/subtype (n, %)</b>			
<b>Influenza Type A, total</b>	16 (28.6%)	12 (29.3%)	43 (29.5%)
<b>PCR</b>	3 (18.8%)	3 (25.0%)	10 (23.3%)
Subtyping performed	1 (33.3%)	2 (66.7%)	6 (60.0%)
H1N1	1 (100%)	0 (0.0%)	2 (33.3%)
H3N2	0 (0.0%)	2 (100%)	4 (66.7%)
Subtyping not performed	2 (66.7%)	1 (33.%)	4 (40.0%)
<b>Antigen (rapid) test</b>	13 (81.3%)	9 (75.0%)	33 (76.7%)
<b>Influenza Type B, total</b>	40 (71.4%)	29 (70.7%)	103 (70.5%)
<b>PCR</b>	31 (77.5%)	7 (24.1%)	19 (18.4%)
<b>Antigen (rapid) test</b>	9 (22.5%)	22 (75.9%)	84 (81.6%)

Note: Data included in this table is voluntarily submitted weekly by our sentinel flu providers. This data may not be comparable to previous flu seasons because providers vary by year.

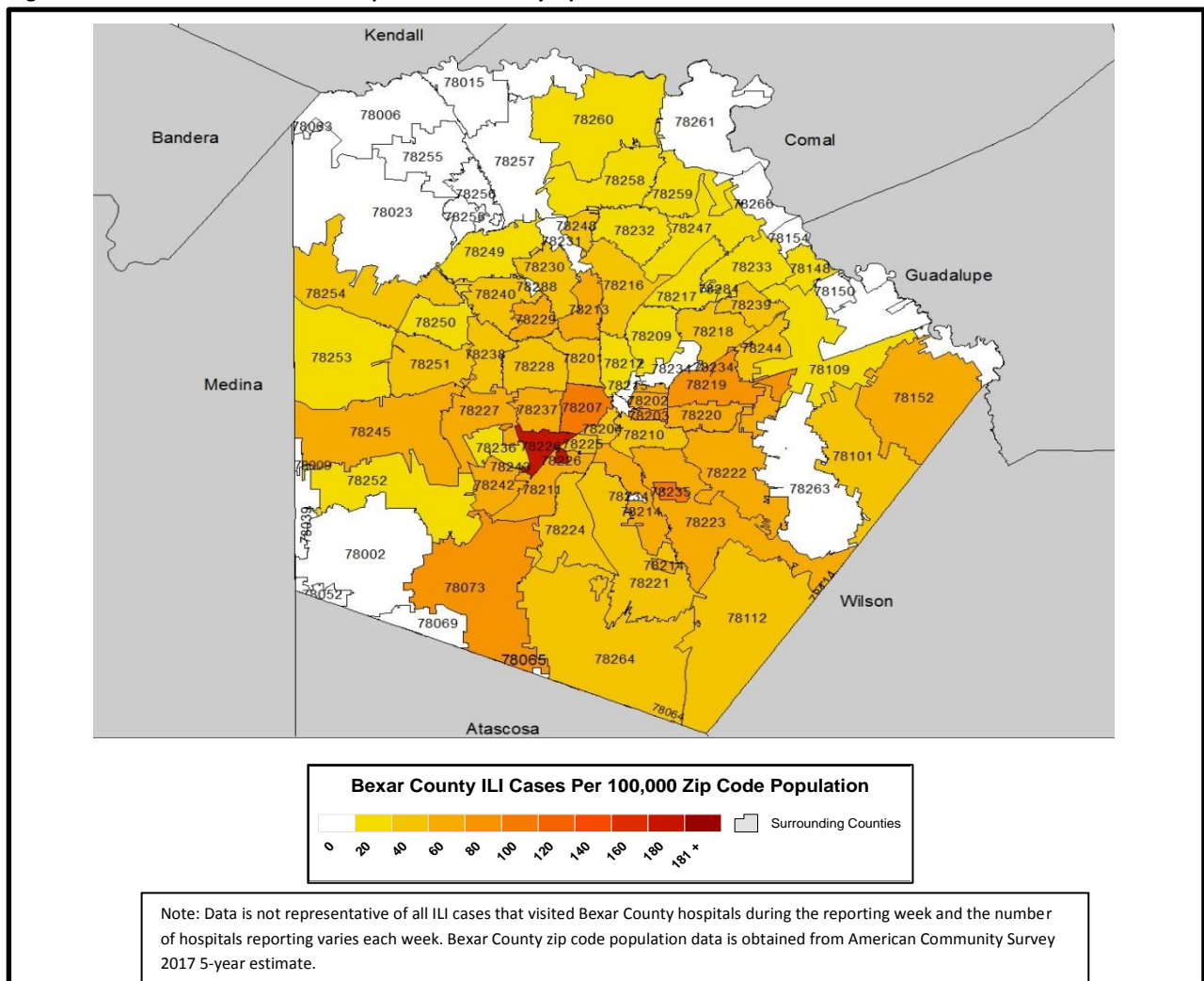
## Electronic Surveillance System for the Early Notification of Community-based Epidemics (ESSENCE)

Hospital providers throughout Bexar County voluntarily report data based on chief complaints of Influenza-like Illness (ILI) defined by influenza or fever plus cough and sore throat. Participating providers are required to report data every 24 hours.

**Table 4: ILI Cases Reported by CDC ILI Age Group in ESSENCE during MMWR Week 44**

CDC ILI Age Group	ILI Cases Per Age Group	ILI Percentage Per Age Group
0 – 4 Years	278	48.9
5 – 24 Years	183	32.2
25 – 49 Years	63	11.1
50 – 64 Years	33	5.8
65 +	12	2.1

**Figure 4: MMWR Week 44 ESSENCE Reported ILI Cases by Zip Code**



## P&I Mortality Surveillance Data

Pneumonia and influenza (P&I) death data are obtained from death certificates of Bexar County residents whose underlying or contributing cause(s) of death is reported as pneumonia or influenza.

Table 5: Bexar County P&I Deaths Occurring September 29, 2019 – November 2, 2019 by Age Group

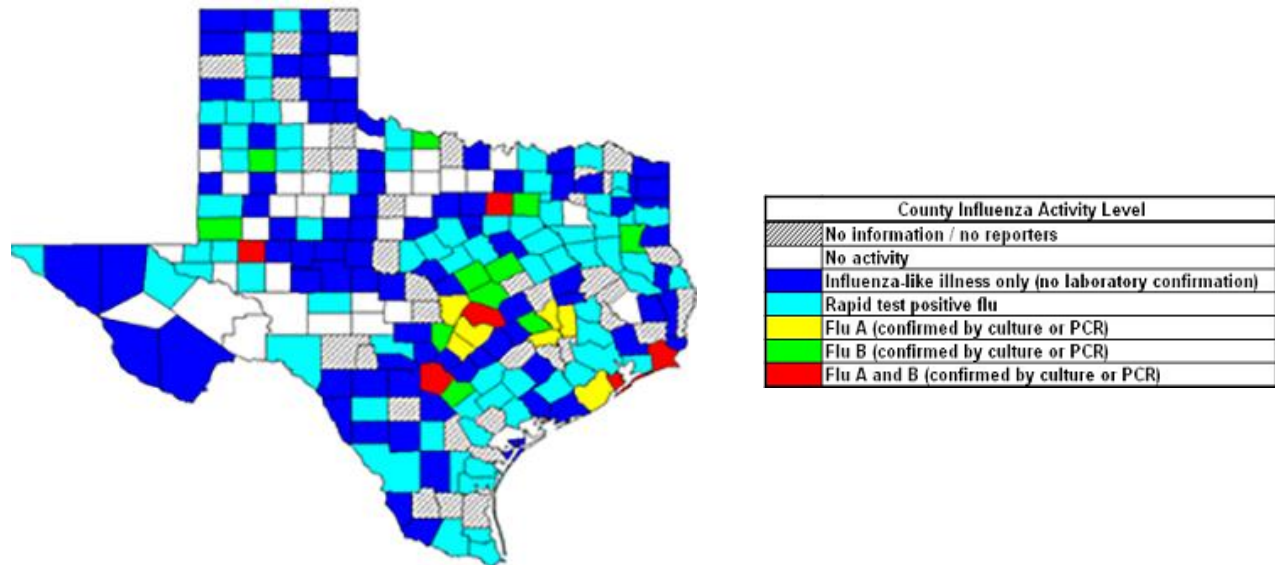
Age Category (years)	Number of P&I Deaths <sup>+</sup>
0-4	<10
5-17	<10
18-49	<10
50-64	<10
65+	44

Note: Data are provisional and subject to change, errors, and duplicates

<sup>+</sup>If cell count is less than 10, the number of P&I deaths is suppressed and <10 is written in the cell

## Statewide Influenza Activity Map

Figure 5: Texas Map Displaying the Highest Level of Influenza or ILI Activity Reported by County for the Week Ending November 2, 2019 (MMWR Week 44)

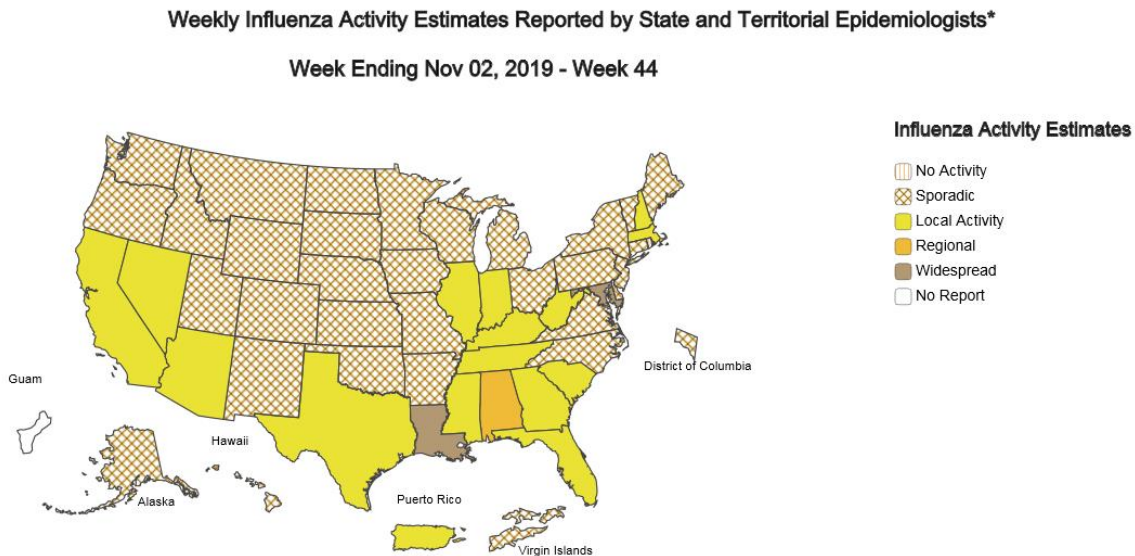


Note: The majority of influenza cases are not reportable by law in Texas. This map contains data from sentinel sites and only displays influenza and ILI cases that were reported to public health. Positive laboratory results are reported according to specimen collection date, or date received in the laboratory if the former is unknown.

Source: <http://www.dshs.state.tx.us/idcu/disease/influenza/surveillance/>

## Nationwide Influenza Activity Map

Figure 6: US Influenza Activity Estimates



\*This map indicates geographic spread and does not measure the severity of influenza activity.

Source: <https://www.cdc.gov/flu/weekly/usmap.htm>

- **View More Bexar County Weekly Influenza Reports on San Antonio Metropolitan Health District's Website:** <https://www.sanantonio.gov/Health/News/HealthDataReports>
- Note: Bexar County seasonal baseline was calculated using a method similar to CDC's National/Regional baseline calculation. For further information on this method, please visit: <https://www.cdc.gov/flu/weekly/overview.htm>
- Influenza-like illness (ILI): patients with a fever of  $\geq 100^{\circ}\text{F}$  and a cough/sore throat
- Influenza activity codes are determined using GIS and are based on influenza activity per zip code tabulation area (ZCTA) within a quadrant-based system for Bexar county.
  - No activity = No or low ILI activity (all four quadrants have  $<20$  per ZCTA population) and no lab confirmed cases
  - Sporadic = Isolated cases of lab confirmed influenza and increased ILI activity in at least one of the four defined Bexar quadrants, but activity does not exceed 100 cases per ZCTA population.
  - Localized =ILI activity within one Bexar quadrant increases above 100 cases per ZCTA population, but all other quadrants remain below 100 cases AND lab confirmed cases have increased since the previous week
  - Widespread = ILI activity has increased above 100 cases per ZCTA population in 2 or more quadrants and lab confirmed cases of influenza have had an increased activity level at least one of the three prior reporting weeks
- **For questions about influenza surveillance and reporting for Bexar County**, email SA Metro Health's Influenza Surveillance Coordinator Cynthia Williams at [Cynthia.Williams@sanantonio.gov](mailto:Cynthia.Williams@sanantonio.gov)