

**Bexar County Influenza Surveillance Report, 2018-2019 Season; 2019 MMWR Week 13**  
(March 24, 2019 – March 30, 2019)

**Summary**

Influenza activity continues to be widespread in San Antonio and Bexar County. Compared to the previous week, the percentage of patient visits due to influenza-like illness (ILI) decreased and there was a decrease in reports of positive testing specimens for influenza by the public health and hospital laboratories. There were no influenza-associated pediatric deaths reported this week. No influenza-associated outbreaks were reported this week; 19 have been reported this season.

**Table 1: Summary of Recent Bexar County Influenza and Influenza-like Illness (ILI) Activity**

	Percent Change from Previous Week	Current Week 13	Previous Week 12	Data Cumulative since September 30, 2018 (Week 40)
Percentage of specimens positive for influenza by hospitals and public health laboratory	↓32.7	10.7	15.9	16.5
Percentage of visits due to ILI <sup>+</sup>	↓18.0	4.1	5.0	3.1
Number of variant/novel influenza infections	0	0	0	0
Number of pediatric influenza deaths	0	0	0	0
Influenza activity code	-	Widespread	Widespread	-

Note: Data included in this table have been updated since last week's flu report with any new reports received.

<sup>+</sup>Based on ILINet data

**U.S. Outpatient Influenza-like Illness Surveillance Network (ILINet)**

Information on patient visits to health care providers for influenza-like illness is collected through Bexar County. Health care providers voluntarily report this information to ILINet.

**Figure 1: Percentage of Visits Due to ILI Reported by Bexar County ILINet Participants 2015-2019 Seasons**

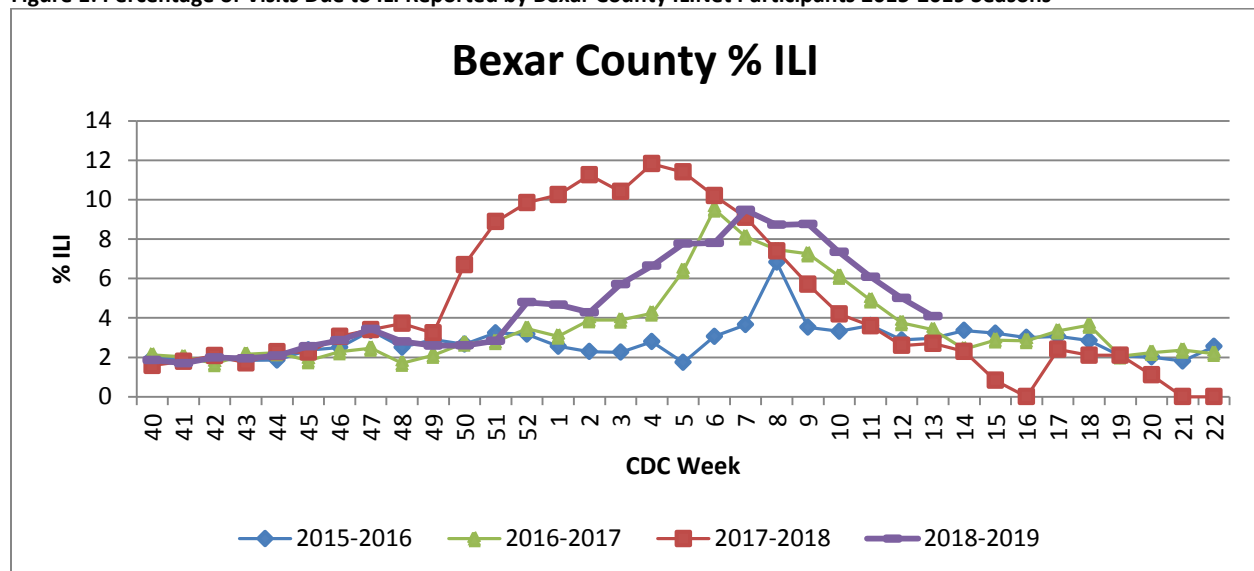
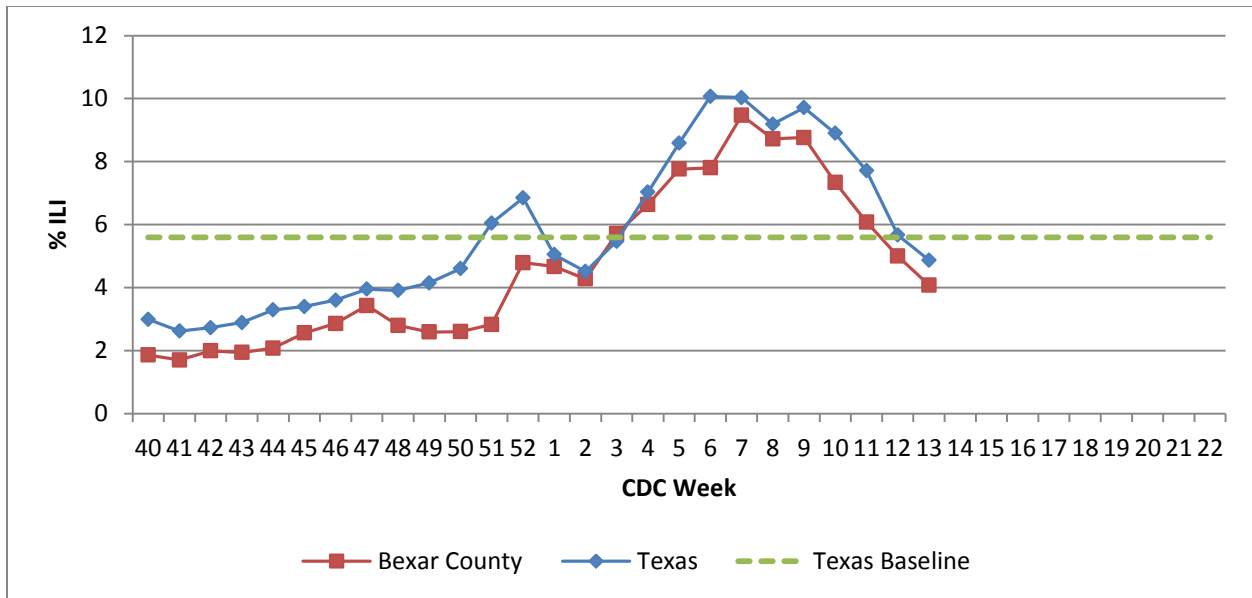


Figure 2: Percentage of Visits Due to ILI Reported by ILINet Participants, Texas and Bexar County, 2018-2019



## Laboratory Results

### Hospital and Public Health Laboratory Testing

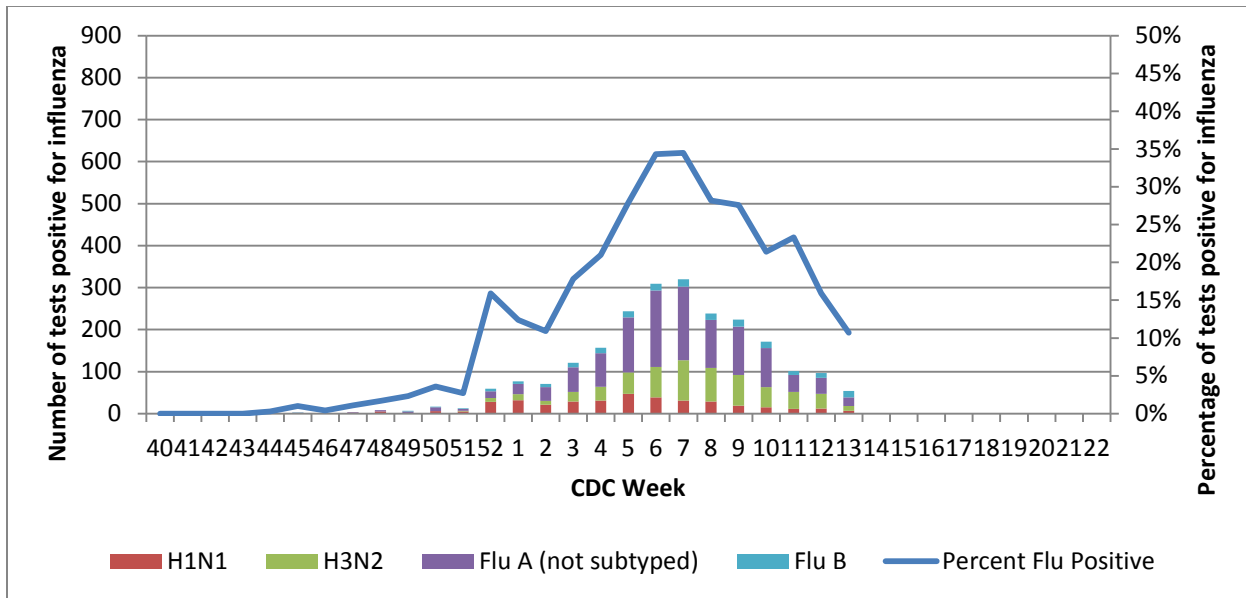
Hospital laboratories voluntarily report influenza tests (antigen, culture, and PCR) to the National Respiratory and Enteric Virus Surveillance System (NREVSS). Providers throughout Bexar County also submit specimens for influenza testing (PCR) to the San Antonio Metropolitan Health District’s (Metro Health) public health laboratory. The results reported by Texas NREVSS participants and Metro Health for the current week are summarized in the table below.

Table 2: Influenza testing performed in Bexar County for the Current and Previous Week

	Current Week 13	Previous Week 12	Cumulative since September 30, 2018 (Week 40)
<b>Number of specimens tested</b>	507	609	13949
<b>Number of positive specimens (n, %)</b>	54 (10.7%)	97 (15.9%)	2302 (16.5%)
<b>Positive specimens by type/subtype (n, %)</b>			
<b>Influenza Type A</b>	39 (72.2%)	85 (87.6%)	2116 (91.9%)
<b>Subtyping performed</b>	18 (46.2%)	47 (55.3%)	971 (45.9%)
<b>H1N1</b>	7 (38.9%)	12 (25.5%)	374 (38.5%)
<b>H3N2</b>	11 (61.1%)	35 (74.5%)	597 (61.5%)
<b>Subtyping not performed</b>	21 (53.8%)	38 (44.7%)	1145 (54.1%)
<b>Influenza Type B</b>	15 (27.8%)	12 (12.4%)	184 (8.0%)

Note: Data included in this table is voluntarily submitted weekly via NREVSS and Metro Health laboratory and reporting may vary from week to week.

Figure 3: Number and Percentage of PCR Tests Positive for Influenza by Type and Subtype, Bexar County, 2018-2019



**Sentinel Provider Laboratory Testing**

Providers throughout Bexar County also submit test results from influenza rapid testing to the San Antonio Metropolitan Health District on a voluntary basis. These sites are recruited to send this information on a weekly basis. The results from the participating providers are summarized in the table below (Table 3).

Table 3: Influenza testing performed by Bexar County Sentinel Providers

	Current Week 13	Previous Week 12	Cumulative since September 30, 2018 (Week 40)
Number of providers reporting flu tests	19	19	-
Number of positive specimens	194	288	8241
<b>Positive specimens by type/subtype (n, %)</b>			
<b>Influenza Type A</b>	152 (78.4%)	243 (84.4%)	7435 (90.2%)
<b>Subtyping performed</b>	17 (11.2%)	54 (22.2%)	1085 (14.6%)
<b>H1N1</b>	1 (5.9%)	11 (20.4%)	395 (36.4%)
<b>H3N2</b>	16 (94.1%)	43 (79.6%)	690 (63.6%)
<b>Subtyping not performed</b>	135 (88.8%)	189 (77.8%)	6350 (85.4%)
<b>Influenza Type B</b>	42 (21.6%)	45 (15.6%)	806 (9.8%)

Note: Data included in this table is voluntarily submitted weekly by our sentinel flu providers. This data may not be comparable to previous flu seasons because providers vary by year.

## P&I Mortality Surveillance Data

Pneumonia and influenza (P&I) death data are obtained from death certificates of Bexar County residents whose underlying or contributing cause(s) of death is reported as pneumonia or influenza.

Table 4: Bexar County P&I Deaths Occurring September 30, 2018- March 30, 2019 by Age Group

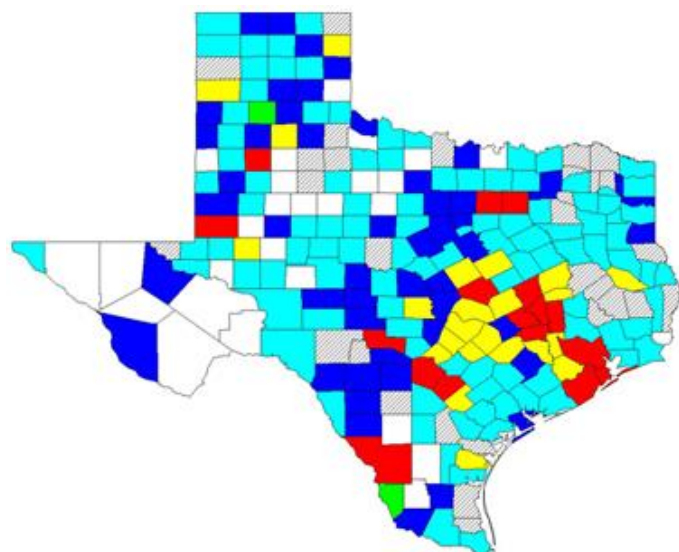
Age Category (years)	Number of P&I Deaths <sup>†</sup>
0-4	<10
5-17	<10
18-49	30
50-64	116
65+	372

Note: Data are provisional and subject to change, errors, and duplicates

<sup>†</sup>If cell count is less than 10, the number of P&I deaths is suppressed and <10 is written in the cell

## Statewide Influenza Activity Map

Figure 4: Texas Map Displaying the Highest Level of Influenza or ILI Activity Reported by County for the Week Ending March 30, 2019 (MMWR Week 13)



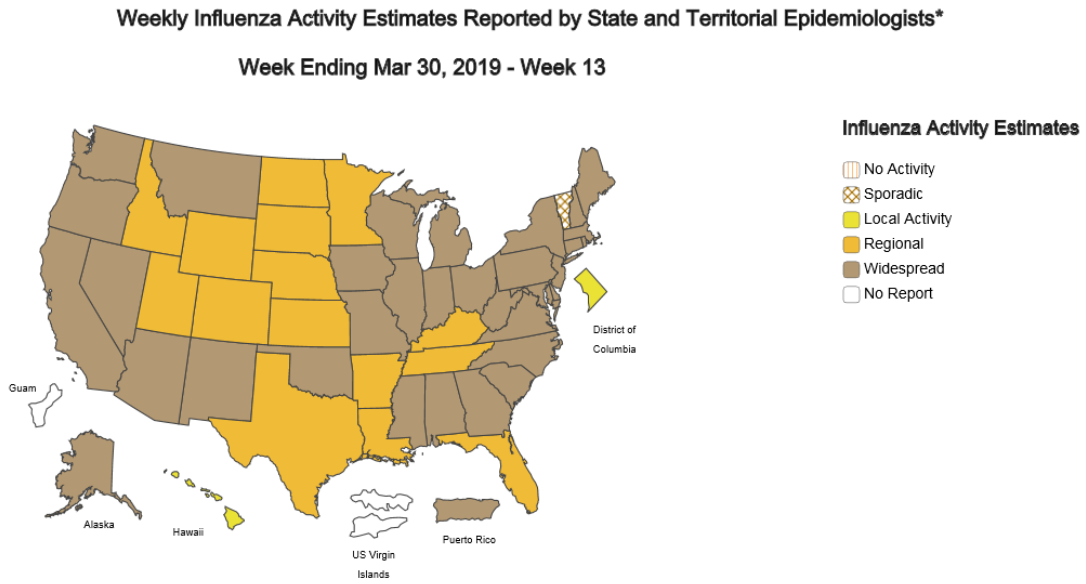
County Influenza Activity Level	
	No information / no reporters
	No activity
	Influenza-like illness only (no laboratory confirmation)
	Rapid test positive flu
	Flu A (confirmed by culture or PCR)
	Flu B (confirmed by culture or PCR)
	Flu A and B (confirmed by culture or PCR)

Note: The majority of influenza cases are not reportable by law in Texas. This map contains data from sentinel sites and only displays influenza and ILI cases that were reported to public health. Positive laboratory results are reported according to specimen collection date, or date received in the laboratory if the former is unknown.

Source: <http://www.dshs.state.tx.us/idcu/disease/influenza/surveillance/>

## Nationwide Influenza Activity Map

Figure 5: US Influenza Activity Estimates



\*This map indicates geographic spread and does not measure the severity of influenza activity.

Source: <https://www.cdc.gov/flu/weekly/usmap.htm>